



**Operator Manual cum
Parts Catalogue**

MIN T

Farm Mechanisation Business Unit

FOREWORD

KIRLOSKAR OIL ENGINES LIMITED (KOEL) congratulates you for becoming a prestigious customer of KOEL by purchasing the MIN T.

Read, Understand and follow all the instructions on the machine and in the manual before attempting to operate.

The Operator Manual covers important usage instructions & guidelines on machine operating procedures, safety instruction, warranty policy, Do's and Don'ts, troubleshooting, periodic service maintenance schedule and Parts catalogue.

Register your product warranty by submitting duly filled warranty registration Card to KOEL dealer. We are providing two labours free Services within five months of purchase, requested to utilize our services according to the service maintenance schedule mentioned in the operator manual.

This Manual covers all variants of MIN T Series of 5 HP & 8 HP Power Weeder's produced by KMW. Please refer relevant details only applicable for your Machine.

©This manual is KOEL design & may not be reproduced in any form, not even part of it without prior permission by KIRLOSKAR OIL ENGINES LIMITED

An continuous improvements are contemplated the illustrations and description are not binding.

CONTENTS

SR. NO.	DESCRIPTION	PAGE NO.
1	MIN T WARRANTY PERIOD, POLICY GUIDE LINES & WARRANTY REGISTRATION CARD	3 - 4
2	TECHNICAL SPECIFICATIONS - MIN T 5 & MIN T 8	5
3	SAFETY PRECAUTION AND DO'S & DON'TS	6 - 7
4	CONTROLS & EQUIPMENT'S WITH OPERATING INSTRUCTION	8 - 11
5	MAINTENANCE & SERVICE	12 - 15
6	TROUBLESHOOTING	16 - 20
7	PARTS CATALOGUE	22 - 86
8	SERVICE COUPONS & CHECK LIST	87
9	PDI CHECK LIST	89

1. MIN T Warranty Period and Warranty Policy Guide Lines

1.1 Warranty Period

Sl. No.	Product	Warranty Coverage
1.	Machine (Engine, Transmission)	6 months or 250 operational hours whichever is earlier from Date of Sale to First Purchaser
2	Proprietary parts, Like : Fuel Injection Pump, Fuel Injector, Tyre, etc.	Warranties for Proprietary parts are subject to respective manufactures as per their warranty policy and guidelines.
3	Accessories / Implements	Will not be covered.

1.2 Warranty Policy Guide Lines

1. The warranty period shall start from the date of purchase of product and applicable to the first purchaser on receipt of the warranty Registration Card.
2. The warranty only covers the manufacturing defect of defective part within the specified warranty time frame only.
3. The warranty will cease if Service maintenance is not carried out as per periodical maintenance schedule.
4. Warranty voids if KOEL genuine parts or approved blades are not used on machine during periodical maintenance.
5. The warranty will not cover for normal wear & tear of parts such as clutch plate, rubber parts, plastic parts, electrical parts.
6. Under warranty period, only repair or replacement of defective parts will be considered, replacement of the machine is not warranted.
7. Warranty is not transferable to the second and subsequent owners.
8. The warranty ceases if the machine is serviced or repaired by unauthorized persons or at any Local workshop.
9. The warranty will not cover for any accidental damage, fire collision, improper usage, tampering, customer abuse and external modifications / fabrications done by the customer.

KOEL reserves the right to refuse warranty if the product was found not to be carried periodical maintenance & installed as per our installation instructions.

2. WARRANTY REGISTRATION CARD / SALES INTIMATION CARD

MIN T Details			
Model		Invoice No.	Invoice Date
Engine No.			
Frame No.		Warranty Start Date	Warranty End Date
Use of MIN T	1. Forest Professionals 2. Orchard 3. Vegetable Crops 4. Hill Area 5. House Garden 6. Any Other (Please Specify)		
Customer Details			
Name			
Village TALUK/TALUKA			
			District
City			PIN
State			Country
Mobile / mail ID			Date of Birth
Customer's Signature (I acknowledge that I have read, understood and I accept the warranty policy and terms explained in Chapter 1.2)		Dealer's Seal & Signature	

- Dealer has to maintain the photo copy of the WRC (Company Copy)

3. Technical Specifications

		MIN T 5	MIN T 8
Engine	Model	CC306	CC418
	Bore X Stroke (mm)	78 x 64	86 x 72
	Displacement (cc)	306	418
	Type	Single Cylinder Air cooled Diesel Engine	Single Cylinder Air cooled Diesel Engine
	Power	4.6 HP	7.5 HP
	Rated rpm	3000	3000
	High Idle rpm	3150	3150
	Starting	Recoil Type (Manual)	Recoil Type (Manual)
Transmission	Gear Box	Combination of Constant & Sliding mesh gears	Combination of Constant & Sliding mesh gears
	No. of Speeds	3 (2 forward + 1 reverse)	3 (2 forward + 1 reverse)
	Clutch	Friction Multi Discs	Friction Multi Discs
Rotary Tiller	Rotation	Fast : 120 rpm	Fast : 120 rpm
		Slow : 70 rpm	Slow : 70 rpm
	Blades (nos.)	30	38
Tiller Blade Type		Dry land Blades	Dry land Blades
Tilling Width		1050 mm	1350 mm
Tilling Depth		≥ 100 mm	≥ 100 mm
Working Speed		0.36 ~ 1.08 Kmph	0.36 ~ 1.08 Kmph
Tyre size		4.00 - 8, 2 ply	4.00 - 8, 2 ply
Dimension L*W*H (mm)		1560 x 950 x 900	1750 x 1350 x 900
Weight		110 Kgs.	125 Kgs.
Handle Adjust	Horizontal	270°	270°
	Vertical	180°	180°

* All Specification are subject to change without notice

4. Safety

4.1 Safety Precautions of MIN T

1. Read and follow the owner's manual and safety instructions carefully before operating.
2. Do not allow children to use the machines.
3. In general all moving parts particular shafts & blades shall be treated as dangerous.

4.2 DO's

1. Read, Understand and follow all instructions on the machine and in the manual before attempting to operate, Keep this manual in a safe place for future and regular reference and for ordering replacement for parts.
2. Be familiar with all controls and their proper operations, know how to stop the machine and disengage them quickly.

A. General Instruction to the Operator - Operators should :

- a) Be in good health, sound mind and be not under the influence of any sort of intoxicants;
- b) Be adequately trained on MIN T and when required;
- c) Obtain and read the operator's manual before using the MIN T for the first time; and when required.
- d) Wear suitable footwear and comfortable clothing.

B. Before Starting MIN T - Operator should :

- a) Inspect the machine and make certain that it is properly adjusted and in good working condition.
- b) Keep all controls in neutral before starting.
- c) Check the oil level of engine and fuel level in tank.
- d) Check the transmission oil level.
- e) Clear the work area of objects that might jam or wrap around the tines such as glass, large sticks, stones, metal objects, wire, rope and string-like materials.

C. Maintenance & Storage - Operator should :

- a) Only use genuine spare parts / accessories approved for MIN T.
- b) Keep machine, attachment and accessories in safe working order.
- c) Apply Grease / Oil to all link, pins and rivets.
- d) Wash and clean the machine periodically.
- e) Machine in level platform.

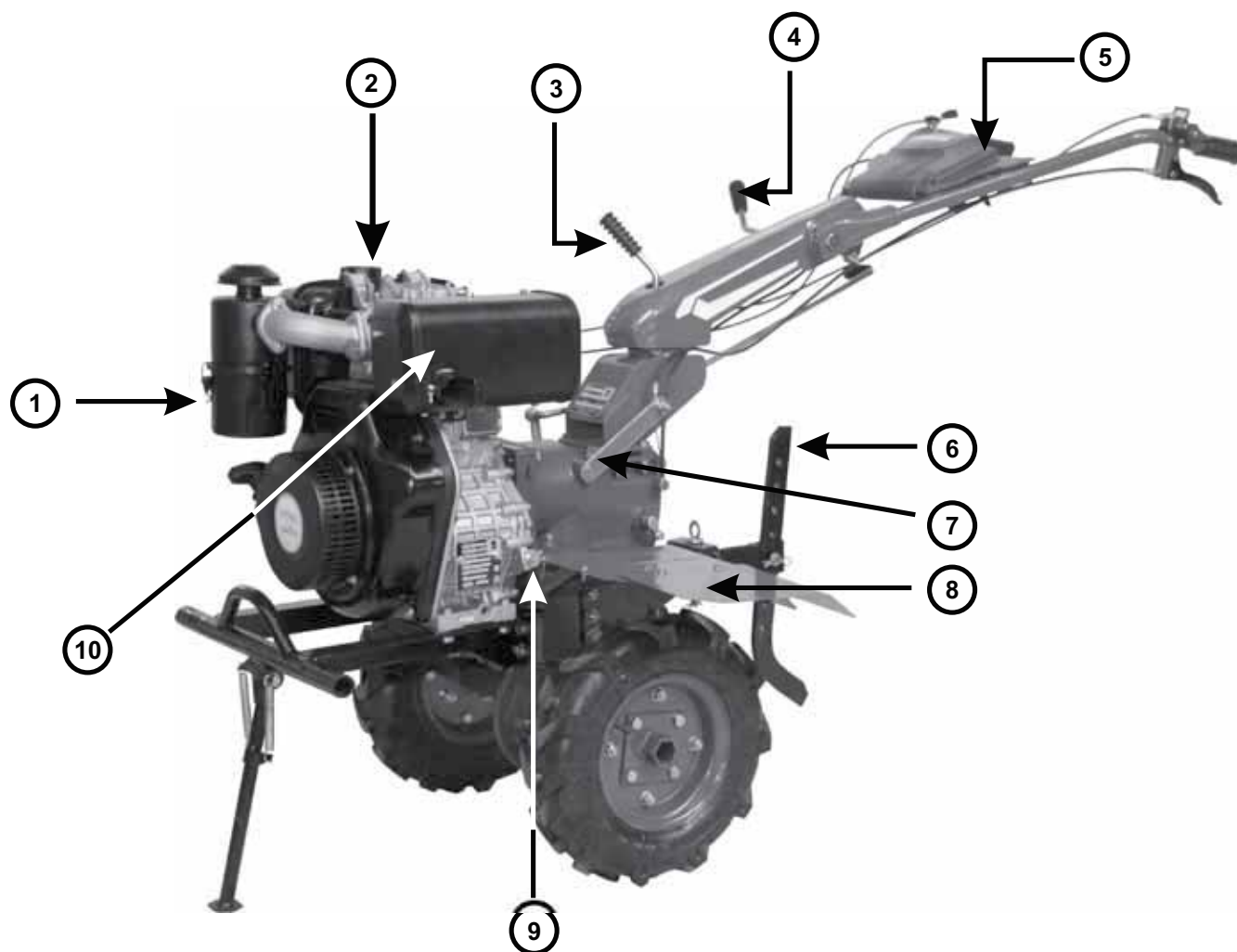
4.3 Don'ts

1. Do not put hands or feet near or under rotating parts.
2. Do not operate the MIN T without any Demonstration training.
3. Do not operate if you find any leakage of Fuel or lubricants.
4. Never place your hands, feet, or any part of your body near or under any moving part while the MIN T engine is running.
5. Do not touch the muffler and engine when the machine is in use.
6. Do not use this machine around large roots and surface rocks.
7. Do not use this machine around underground pipes and wiring.
8. Do not use machine when fuel leakage is observed near FIP, Injector and Fuel lines.
9. Do not operate the machine without good visibility.
10. Do not tamper with any safety devices or fittings.
11. Do not use unapproved attachments.
12. Do not use non recommended blades.
13. Disengage clutch before shifting gear.
14. Ensure gears are aligned properly during shifting and if not release clutch to align the gear.

4.4. Recognize Decals Informations

An important safety incorporated into MIN T is the warning and information decals found in various parts of the machine.

5. Control & Equipment

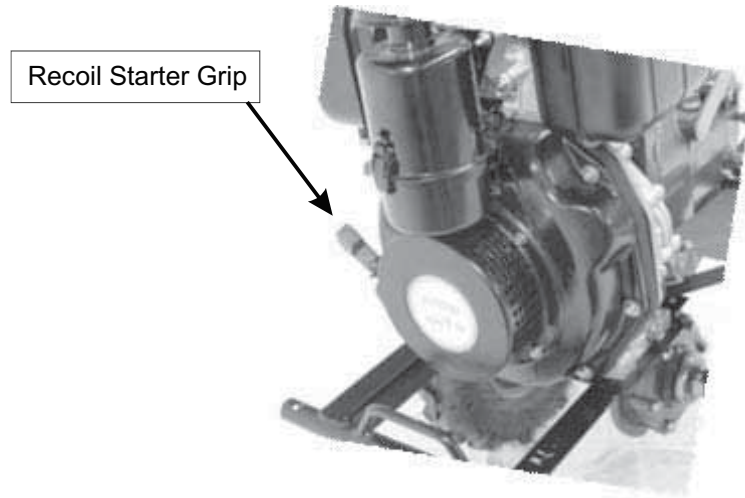


- | | |
|------------------------------|-------------------------------------|
| 1) AIR CLEANER | 6) RESISTANCE BAR |
| 2) FUEL TANK CAP | 7) TRANSMISSION OIL FILLER CAP |
| 3) HANDLEBAR ANGLE ADJUSTER | 8) PROTECTING FENDER |
| 4) HANDLEBAR HEIGHT ADJUSTER | 9) ENGINE OIL FILLER CAP / DIPSTICK |
| 5) TOOL BOX | 10) MUFFLER |

6. Operating Instructions

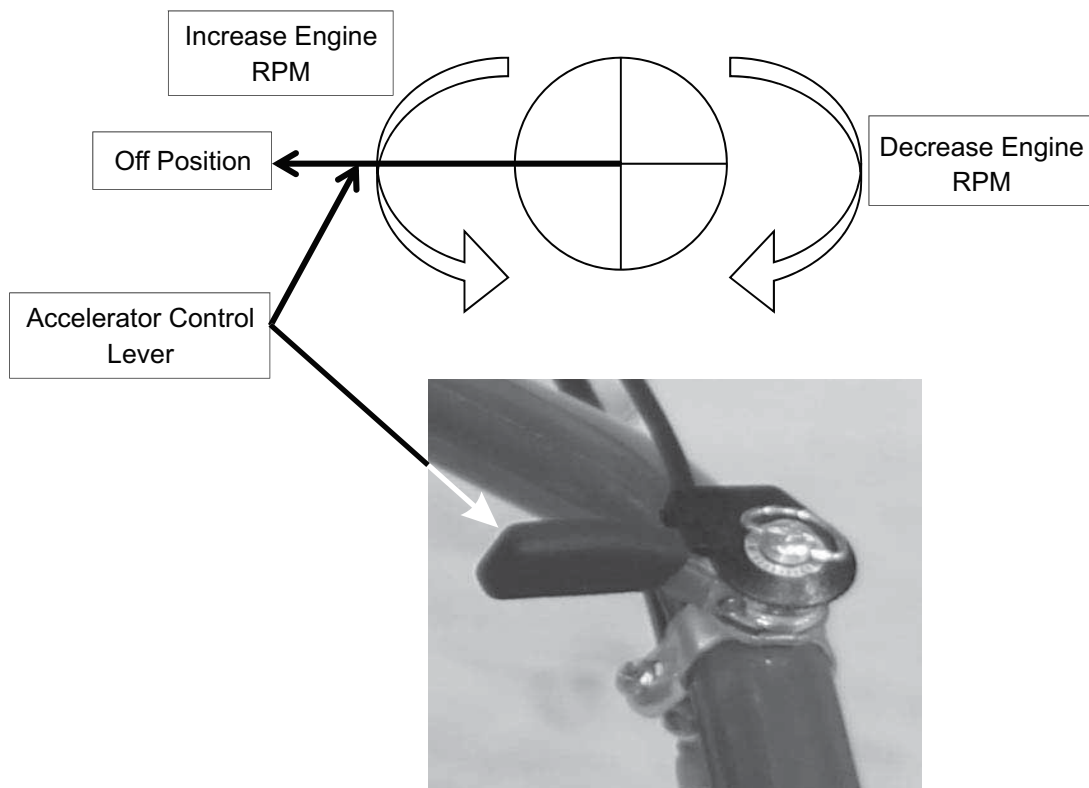
6.1 Recoil Starter Grip

Pulling the starter grip operates the recoil starter to crank the engine



6.2 Accelerator (Throttle) Control Lever

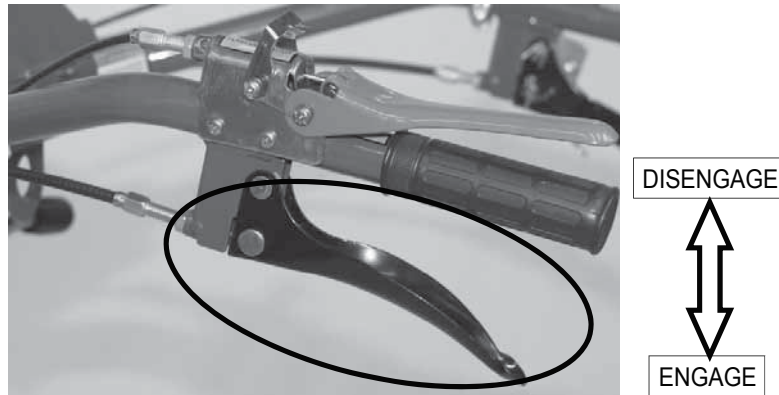
The throttle lever controls the engine speed and time rotations. Moving the throttle lever in the direction shown, run the engine faster or slower.



- ❖ To increase engine RPM, pull the lever to anti clockwise direction.
- ❖ To decrease engine RPM, push the lever to clockwise direction.

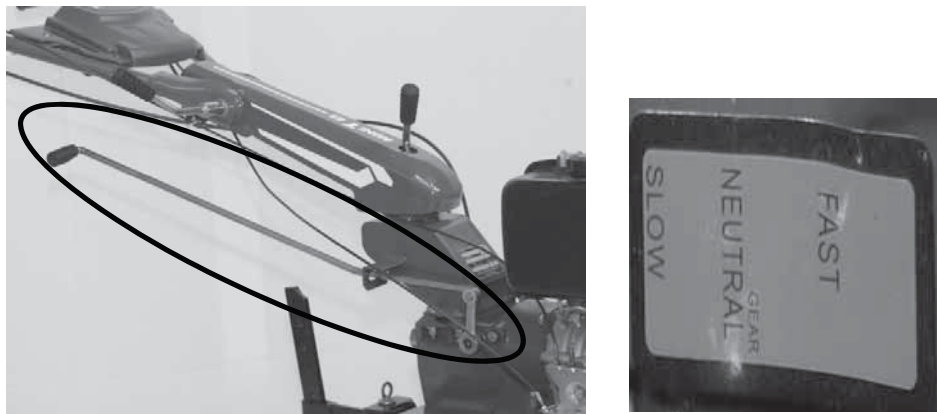
6.3 Main clutch Lever

The main clutch lever engages and disengages the transmission that drives the blades. It is located on left hand side to handlebar.

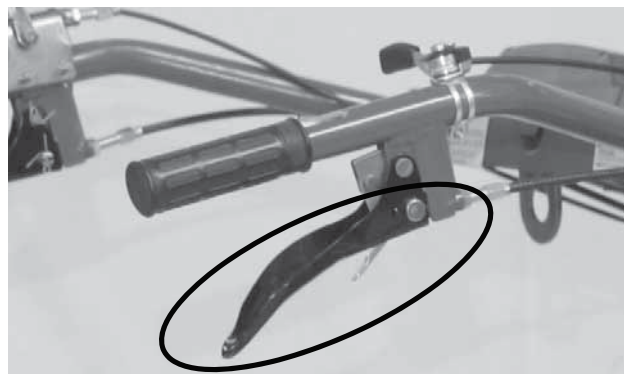


6.4 Lever for Forward & Reverse Speed

The transmission offers a choice of fast & slow speed in forward direction.



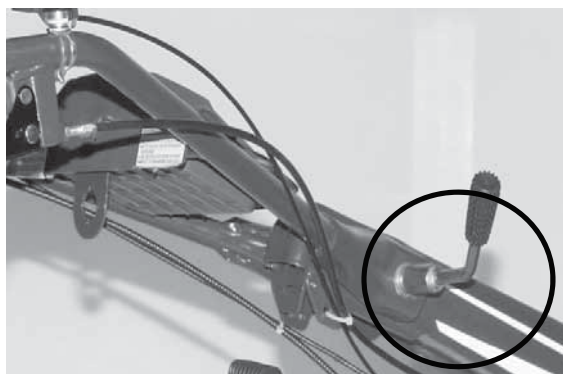
Reverse speed lever with reverse lock located on right hand side of handlebar with identification sticker



To operate the reverse lever, reverse lock should be pressed along with reverse lever to operate in reverse gear

6.5 Handlebar Height Adjuster

Handlebar height can be adjusted to match operator height. For normal tilling, most comfortable operator height is with the handlebars at waist height.



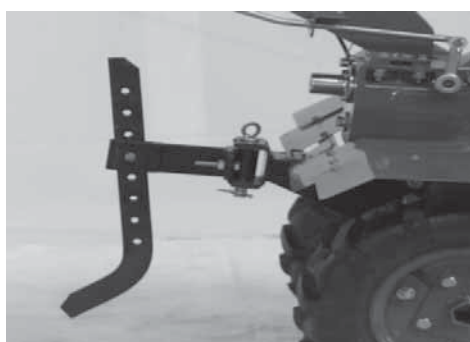
6.6 Handlebar Angle Adjuster

If the handlebar angle adjustment is needed, loosen the handlebar fixing lever, move the handlebar to a required position and tighten the lever. The handlebar can swing within the sweep of 90° from the centre to the right and left each.



6.7 Resistance Bar

Resistance Bar controls tilling depth and should always be used when tilling. It enables you to compensate for the hardness of the soil. Ideal resistance bar height will depend on the type of soil being tilled and soil conditions at the time of tilling. In general, the resistance bar should be adjusted so that the tiller is tilted slightly backward.



7. Maintenance

The purpose of the maintenance schedule is to keep the tiller in the best operating condition. Inspect or service as scheduled in the table below.

Remember that your service dealer knows your tiller best and is fully equipped to maintain and repair it.

To ensure the best quality and reliability, use only new, KOEL genuine parts for repair and replacement.

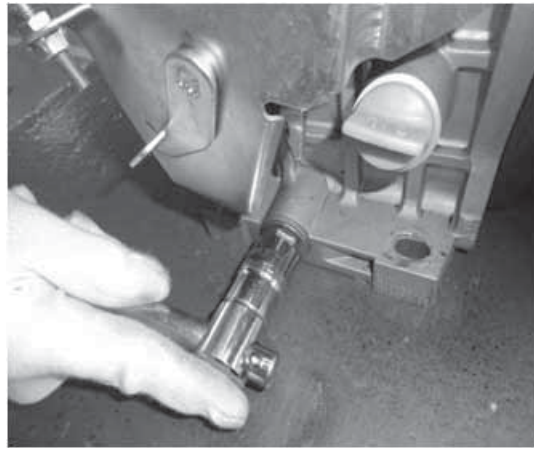
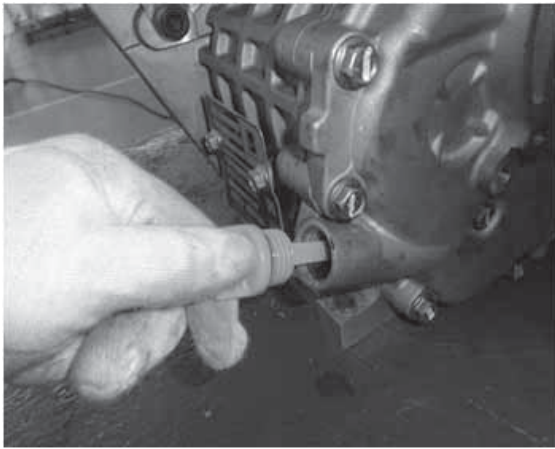
7.1 Maintenance Chart						
	Daily	Free Service Period (from date of delivery)			Frequency	
		20 hrs. / 30 days	100 hrs. / 75 days	200 hrs. / 150 days	100 hrs. / 75 days	200 hrs. / 150 days
Clean Crank Case		C	C	C	C	
Engine Oil	I	R	R	R	R	
Clean Air cleaner	I	C	C	C	C	
Fuel Level	I					
Fuel Filter Element		R		R		R
Valve Clearance (adjust if necessary)		I/A	I/A	I/A	I/A	
Cylinder Head Bolts		I/T	I/T	I/T	I/T	
Main Gear Box Oil			R	R	I/F	
Decompression lever	I					
Blade fitting Nuts and Bolts	I/T					
Injector Pressure and timing			I	I	I	
Clutch free play	I/A	I/A	I/A	I/A	I/A	

C - Clean	I - Inspect	R - Replace	T - Torque	A - Adjust	F - Fill/Top-up
-----------	-------------	-------------	------------	------------	-----------------

* Routine paid services to be done at every 75 days or 100 hrs. (Whichever is earlier)

7.2 Engine Oil Change Procedure

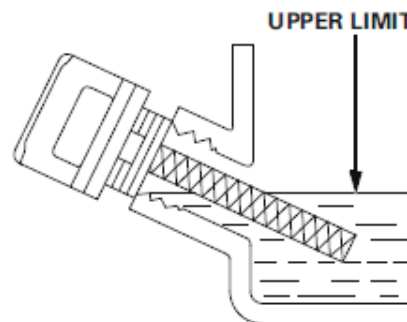
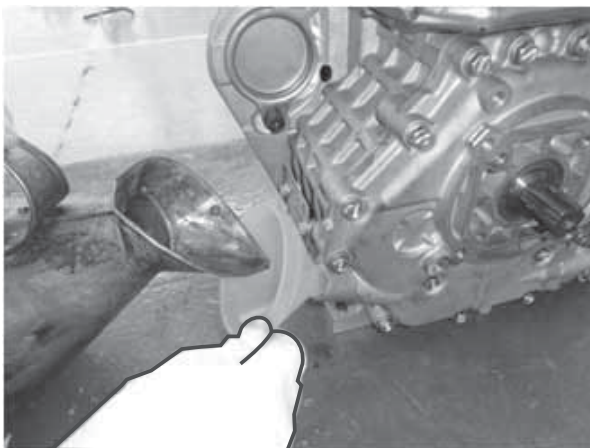
Place MIN T on flat surface, remove sump drain plug & engine oil filter cap / dipstick.



Drain the old / used oil and collect it in a container while the engine is warm to assure rapid and complete draining.

After complete oil drain out, tighten the drain plug securely.

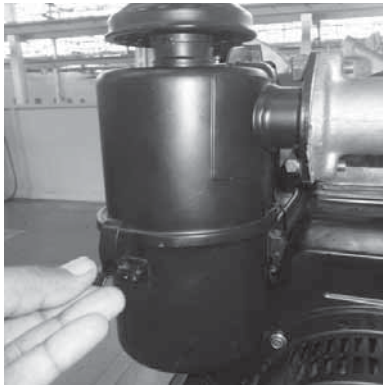
Fill recommended, new engine oil to the outer edge of the oil filler hole. Use funnel to avoid oil spilling.



Reinstall oil filler cap & tighten.

After completing the process, start engine for 2-3 minutes for complete oil circulations.

7.2 Air Cleaner Oil change & Cleaning Procedure



- Step 1 - Loosen air filter clamps, separate oil bath bowl & filter element



- Step 2 - Dispose old oil from bowl & wipe out dust particles from bowl by use of clean cloth.
- Step 3 - Fill new recommended oil into oil bath bowl.



- Step 4 - Clean Filter elements with diesel or kerosene & reinstall. If filter elements are damaged, replace with new one.



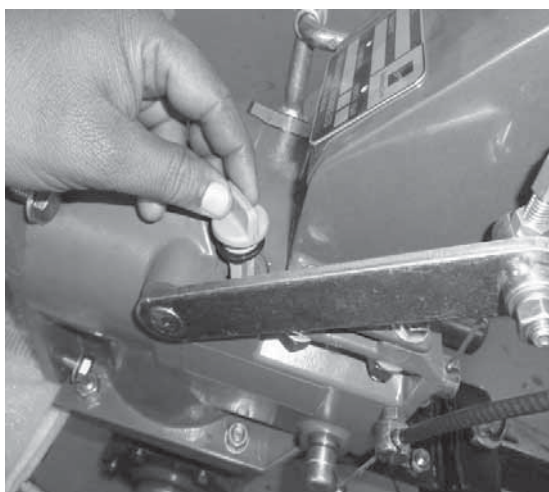
- Step 5 - Reinstall oil bath bowl & tighten filter bowl clamps.

Note : Operating engine with dusty oil or damaged filter element causes poor engine performance.

7.4 Transmission Oil Change Procedure



- Place MIN T on flat surface & keep oil container tray at bottom of gear box to collect old oil
- Drain out transmission oil by removing transmission drain plug and oil filler cap.
- After completion oil drain out, reinstall the drain plug securely & fill recommended transmission oil into the gear box. Use funnel to avoid oil spilling.



- Use of filler gun or oil applicator to avoid oil spilling.
- After completion of process, reinstall oil filler cap.
- To check transmission oil level, remove oil level filler cap provided at top side of gear box assy.

7.5 Lubrication Specification Chart

USE ONLY KOEL RECOMMENDED OIL & LUBICANTS				
Model	Lubricants Type	Specifications	Quantity	Replacement
MIN T 5	Engine Oil	SAE 15W - 40, CF-4	1.1 LTRS.	Every Service
	Transmission Oil	SAE 80W - 90, GI-4	2.5 LTRS.	200 Hrs or 5 months
	Air Cleaner	SAE 15W - 40, CF-4	15 - 20 ML	Every Service
MIN T 8	Engine Oil	SAE 15W - 40, CF-4	1.65 LTRS.	Every Service
	Transmission Oil	SAE 80W - 90, GI-4	2.5 LTRS.	200 Hrs or 5 months
	Air Cleaner	SAE 15W - 40, CF-4	15 - 20 ML	Every Service

7.6 Free Service Schedule

Free Service recommended with following schedule (Month or Hours of usage whichever is earlier)				
Sr. No.	Free Service	Days	Total Hours Used	Date of Sale
1	1st Free Service	30	20	
2	2nd Free Service	75	100	
3	3rd Free Service	150	200	

8 Troubleshooting

8.1 Engine Troubleshooting

Engine Not Starting		
Sr. No.	Cause	Action Taken
1	Fuel quantity less	Keep sufficient fuel in tank / Check fuel level in inclined machine position / Priming to be done by hand priming pump
2	Unsteady Fuel Flow	Check fuel tank, fuel filter and fuel lines for any bend or any blockage. Clean or replace if required.
3	Air in the Fuel system	Check fuel pipes leakage, replace if found leak. Check banjo, washers & O rings, replace if required. Release air from fuel system.
4	Valve Clearance Incorrect	Adjust Valve Clearance as recommended.
5	Injector Pressure	Check injector Pressure, adjust if required as recommended.
6	Incorrect Fuel injection Timing	Check Fuel Timing & adjust if required by Spill Cut Off method
7	FIP Pressure low	Remove FIP and check it, at the OEM Service Centre. Calibrate the FiP if required.
8	Low Compression Pressure	Check Engine compression as recommended. If found less remove Cylinder head and check valve seat leakage, rework it. If found ok then check Piston Rings butt gap and Piston to Liner Clearance. Any of those found more, then replace it.

Engine Stalls (Stops Running)		
Sr. No.	Cause	Action Taken
1	Air in the Fuel system	Check fuel pipes leakage, replace if found leak. Check banjo, washers & O rings, replace if required. Release air from fuel system.
2	Low Oil Level	Check the quantity of oil, replenish if insufficient.

3	Lube Oil Pump & Strainer	Inspect Lube Oil Pump to see if it works normally, Replace if required. Check all oil ducts. Check Strainer blockage. Clean it & replace if required
4	Low Injector Pressure	Check Injector Pressure; adjust injector pressure if required as recommended.
5	Incorrect Fuel Injection Timing	Check Fuel Timing & adjust if required by spill Cut Off method
6	FIP pressure low	Remove FIP and check it, at the OEM Service Centre, Calibrate the FIP if required.

Black Smoke from Engine		
Sr. No.	Cause	Action Taken
1	Adulterated Fuel in tank	Drain fuel from tank, filter and fuel pipes, Flush fuel system and refill with diesel.
2	Engine Overloaded	Reduce load appropriately and adjust speed. Check the belt tension. Adjust as recommended. Check the implement Depth and adjust the depth as recommended.
3	Air Filter Choked	Clean the wire mesh & foam with diesel or kerosene. Replace the foam if required.
4	Low Injector Pressure	Check injector Pressure; adjust injector pressure if required as recommended.
5	Incorrect Fuel Injection Timing	Check Fuel Timing & adjust if required by Spill Cut Off method.
6	FIP pressure low	Remove FIP and check it, at the OEM Service Centre. Calibrate the FIP if required.
7	Low Compression Pressure	Check Engine compression as recommended. If found less removed Cylinder head and check valve seat leakage, rework it. If found ok then check Piston Rings butt gap and Piston to Liner clearance. Any of those found more gaps then replace it.

Engine Starts But Fires Intermittently & Stops		
Sr. No.	Cause	Action Taken
1	Air Filter Choked	Clean the wire mesh & foam with diesel or kerosene. Replace the foam if required.
2	Silencer Choked	Clean exhaust system, if required replace silencer.
3	Water In Fuel System	Drain fuel from tank, filter and fuel pipes. Flush fuel system and refill with diesel.
4	Fuel Filter Choked	Change Fuel filter
5	Low Injector Pressure	Check Injector Pressure; adjust Injector pressure if required as recommended.
6	FIP Pressure Low	Remove FIP and check it, at the OEM Service Centre. Calibrate the FIP if required.

8.2 Clutch Troubleshooting

Clutch Failure		
Sr. No.	Cause	Action Taken
1	Friction discs failure	Replace with new discs
2	Tension spring loose	Screw in the adjusting nut of tension screw rod
3	Bearing in the clutch is damaged	Replace with new bearing

Clutch Slipping		
Sr. No.	Cause	Action Taken
1	Spring fatigue and failure	Replace with new spring
2	Cable wire adjusting screw rod loose	Tighten the cable wire adjusting screw rod and lock it

8.3 Gear Box Troubleshooting

Reverse Gear not in position		
Sr. No.	Cause	Action Taken
1	Reverse Cable wire failure	Readjust or change the cable wire
2	Reverse gear shaft loose	Tighten the bolt at end of reverse gear shaft
3	Reverse gear fork jammed	Clear the gap of reverse gear fork axle and the steel sleeve
4	The sleeve is over worn	Change the sleeve
5	Reverse gear shaft loose and causes gear to get stuck	Tighten bolt at end of reverse gear shaft

Reverse gear does not go back to position		
Sr. No.	Cause	Action Taken
1	Reverse gear shaft spring failure	Replace the spring
2	Reverse gear shaft deformed	Replace the reverse gear shaft

Reverse gear shaft loose		
Sr. No.	Cause	Action Taken
1	Reverse gear shaft bolts loose	Tighten the bolt
2	Reverse gear shaft and gearbox case installation loose	Replace the same

Overheating		
Sr. No.	Cause	Action Taken
1	Lack of lube oil	Add gear box oil
2	Gears side gap narrow	Reinstall gear
3	The axial clearance is too small	Readjust

8.4 Other Troubleshooting

Rotary blades are broken		
Sr. No.	Cause	Action Taken
1	Collided with stones in the course of using	Replace the blades. Avoid colliding with hard things like stones in the soil when working.

The Operating cable is broken		
Sr. No.	Cause	Action Taken
1	Long-time abrasion in work	Replace the cables



**Engine Parts
Catalogue - 5HP**

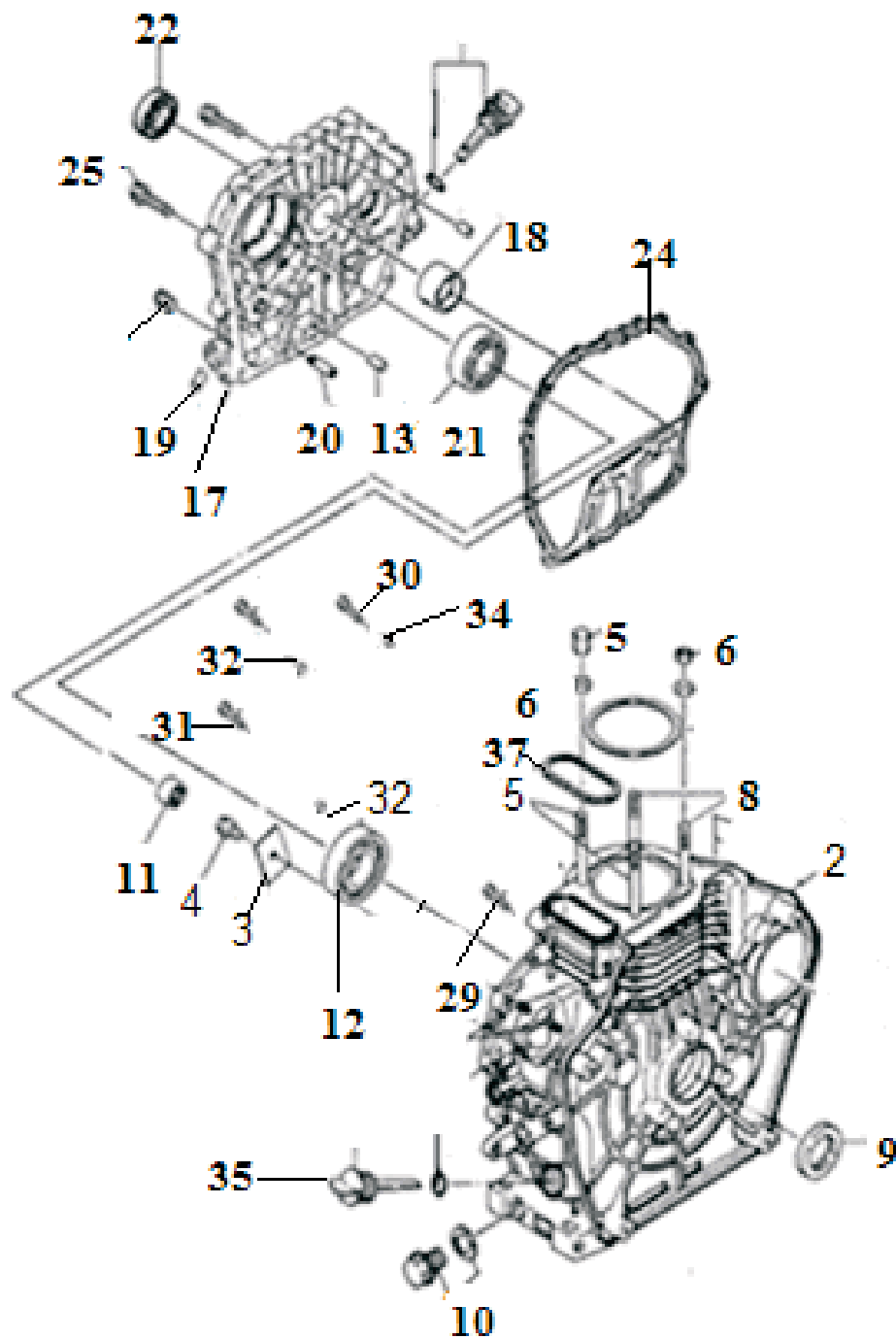
MIN T

Farm Mechanisation Business Unit

CONTENTS

Sr.No.	DESCRIPTION	ASSEMBLY CODE	PAGE NO
1	ENGINE BLOCK	CC3.001.10.0.00	23 - 24
2	CYLINDER HEAD ROCKER ARM & COVER ASSEMBLY	CC3.002.30.0.00 CC3.002.10.0.00	25 - 26
3	PISTON & CON ROD ASSEMBLY		27 - 28
4	CRANKSHAFT, CAMSHAFT, BALANCER SHAFT & FLYWHEEL ASSEMBLY		29 - 30
5	LUBRICATION & SPEED CONTROL SYSTEM		31 - 32
6	AIR FILTER ASSEMBLY		33 - 34
7	INJECTOR ASSEMBLY		35
8	FUEL INJECTION PUMP ASSEMBLY		36
9	FUEL FILTER ASSEMBLY	P05.0709.030.0.PR	37 - 38
10	HIGH PRESSURE PIPE ASSEMBLY		39
11	FUEL TANK AND BRACKET		40
12	EXHAUST SYSTEM		41
13	INJECTOR LEAK OF ASSEMBLY		42
14	RECOIL STARTER ASSEMBLY	CC3.015.20.0.00	43
15	VARIABLE SPEED ASSEMBLY		44
16	WIND LEADING CASE ASSEMBLY		45 - 46

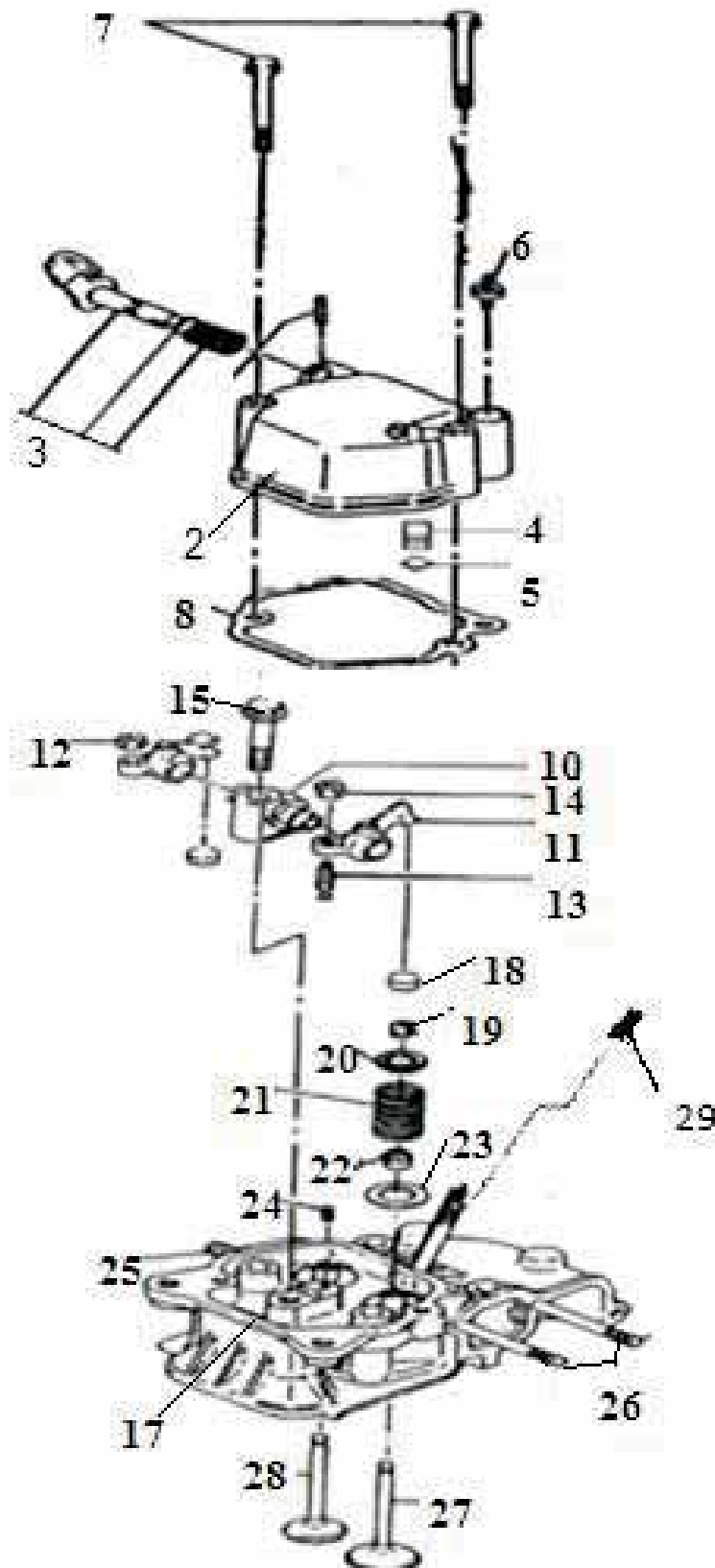
ENGINE BLOCK (CRANK CASE)



ENGINE BLOCK (CRANKCASE)

Sr. No.	Part No.	Description	Qty.	Remark
*1	CC3.001.10.0.00	CYLINDER BLOCK/CRANKCASE ASSEMBLY	1	CONSISTING OF SR. NO. 2 TO 13 AND 30 - 35
2	CC3.001.007.0.00	CYLINDER BLOCK	1	
3	CC1.001.022.0.00	THRUST PIECE	1	
4	50.003.08.0.14	SET SCREW M8 x1.25 x 14	1	
5	CC3.001.016.0.00	CYLINDER HEAD STUD (LONG)	2	
6	50.505.08.000.	SPRING WASHER- M8	1	
7	50.506.08.000.	PLAIN MACHINED WASHER - M8	1	
8	CC3.001.011.0.00	CYLINDER HEAD STUD (SHORT)	2	
9	CC3.001.006.0.00	REAR OIL SEAL (30x 45 x 8)	1	
10	CC1.001.054.0.00	OIL DRAIN PLUG M16x 15 WITH GASKET	2	
11	CC1.001.024.0.00	NEEDLE BEARING 7941/15	1	
12	CC3.006.009.0.00	BALL BEARING 6307	1	
13	CC1.001.057.0.00	RETAINING PIN 8 x 12	2	
*14	CC3.001.010.0.00	BEARING 6202	1	
*15	CC3.004.30.0.00	FORK LEVER ASSEMBLY	1	
*16	CC3.001.40.0.00	CRANKCASE COVERASSEMBLY	1	CONSISTING SR. NO. 17 TO 25
17	CC3.001.027.0.00	CRANKCASE COVER	1	
18	CC3.001.035.0.00	MAIN BUSHING	1	
19	CC3.001.028.0.00	ALUMINUM PLUG Ø 8 x 8	1	
20	CC3.001.56.0.00	OIL GUIDE	1	
21	CC3.001.026.0.00	BEARING 6206	1	
22	CC3.001.032.0.00	FRONT OIL SEAL 30 x 45 x 10	1	
*23	CC3.001.010.0.00	BEARING 6202	1	
24	CC3.001.025.0.00	CRANKCASE COVER GASKET	1	
24	CC3.001.025.0.00	CRANKCASE COVER GASKET	1	
25	CC3.001.042.0.00	FLANGE BOLT M8 x 1.25 x 35 L 8.8	16	
29	CC3.001.041.0.00	FLANGE BOLT M8 x 1.25 x 40 HEAD 10mm	2	
30	CC3.001.014.0.00	CYLINDER HEAD NUTS (LONG)	2	
31	CC3.001.013.0.00	CYLINDER HEAD NUTS (SHORT)	2	
32	CC3.001.012.0.00	CYLINDER HEAD NUT WASHER M10 OD = 20MM THK = 3	2	
33	CC3.001.71.0.00	CYLINDER HEAD GASKET 0.1 mm	1	
	CC3.001.72.0.00	CYLINDER HEAD GASKET 0.2 mm	1	
	CC3.001.73.0.00	CYLINDER HEAD GASKET 0.3 mm	1	
	CC3.001.74.0.00	CYLINDER HEAD GASKET 0.4 mm	1	
	CC3.001.76.0.00	CYLINDER HEAD GASKET 0.5 mm	1	
34	CC3.001.017.0.00	RECTANGLE RING GASKET 4.5 x 2.2	1	
35	CC1.001.018.0.00	OIL DIPSTICK WITH "O" RING	2	

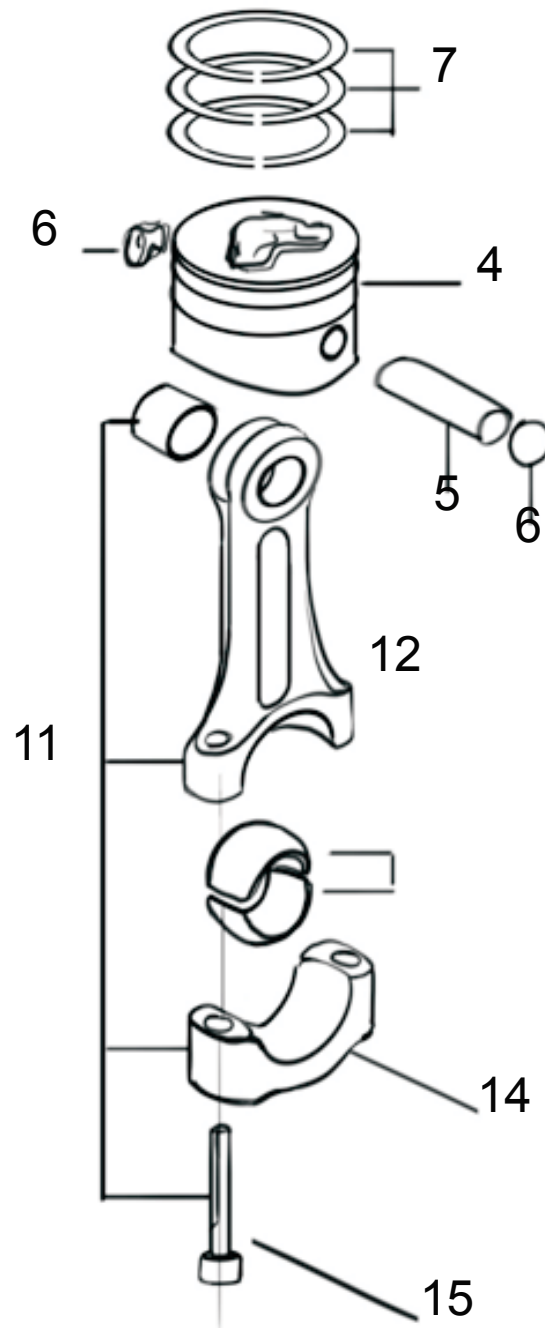
CYLINDER HEAD ROCKER ARM & COVER ASSEMBLY



CYLINDER HEAD ROCKER ARM & COVER ASSEMBLY

Sr. No.	Part No.	Description	Qty.	Remark
*1	CC3.002.10.0.00	ROCKER COVER ASSEMBLY	1	CONSISTING SR. NO. 2 TO 8
2	CC3.003.002.0.00	ROCKER COVER	1	
3	CC3.003.005.0.00	DECOMPRESSION SHAFT	1	
4	CC3.003.010.0.00	BREATHER ASSEMBLY	1	
5	CC1.002.028.0.00	"O" RING (12 x 19)	1	
6	CC1.002.030.0.00	FLANGE BOLT M6 x 1 x 70 L 8.8	1	
7	CC1.002.002.0.00	OILING SCREW PLUG	3	
8	CC3.003.001.0.00	ROCKER COVER GASKET	1	
*9	CC3.002.20.0.00	ROCKERARMASSEMBLY	1	CONSISTING SR. NO. 10 TO 15
10	CC3.002.016.0.00	ROCKER ARM BODY WITH SHAFT	1	
11	CC3.002.017.0.00	ROCKER ARM	2	
12	CC3.002.011.0.00	CLIP A	2	
13	CC3.002.012.0.00	ROCKER ARM SCREW M6 x 1 x 32	2	
14	CC3.002.013.0.00	ROCKER NUT M6	2	
15	CC1.300.15.0.00	FLANGE BOLT M8 x 1.25 x 45	2	
*16	CC3.002.30.0.00	CYLINDER HEAD ASSEMBLY	1	CONSISTING SR. NO 17 TO 28
17	CC3.002.025.0.00	CYLINDER HEAD	1	
18	CC3.002.018.0.00	ADJUSTING VALVE SPACER	2	
19	CC3.002.019.0.00	VALVE COLLET	4	
20	CC3.002.020.0.00	VALVE SPRING SEAT	2	
21	CC3.002.021.0.00	VALVE SPRING	2	
22	CC3.002.022.0.00	VALVE GUIDE OIL SEAL	2	
23	CC3.002.023.0.00	VALVE SPRING WASHER	2	
24	CC3.002.008.0.00	PIN 4 x 8	1	
25	CC1.002.048.0.00	STUD M8 x 1.25 x 36	2	
26	CC3.002.024.0.00	STUD A M6 x 90	2	
27	CC3.002.003.0.00	INLET VALVE	1	
28	CC3.002.004.0.00	EXHAUST VALVE	1	
29	06.072.03.0.00	SPACER (BAR) FOR ACTUATOR-INJECTOR	2	

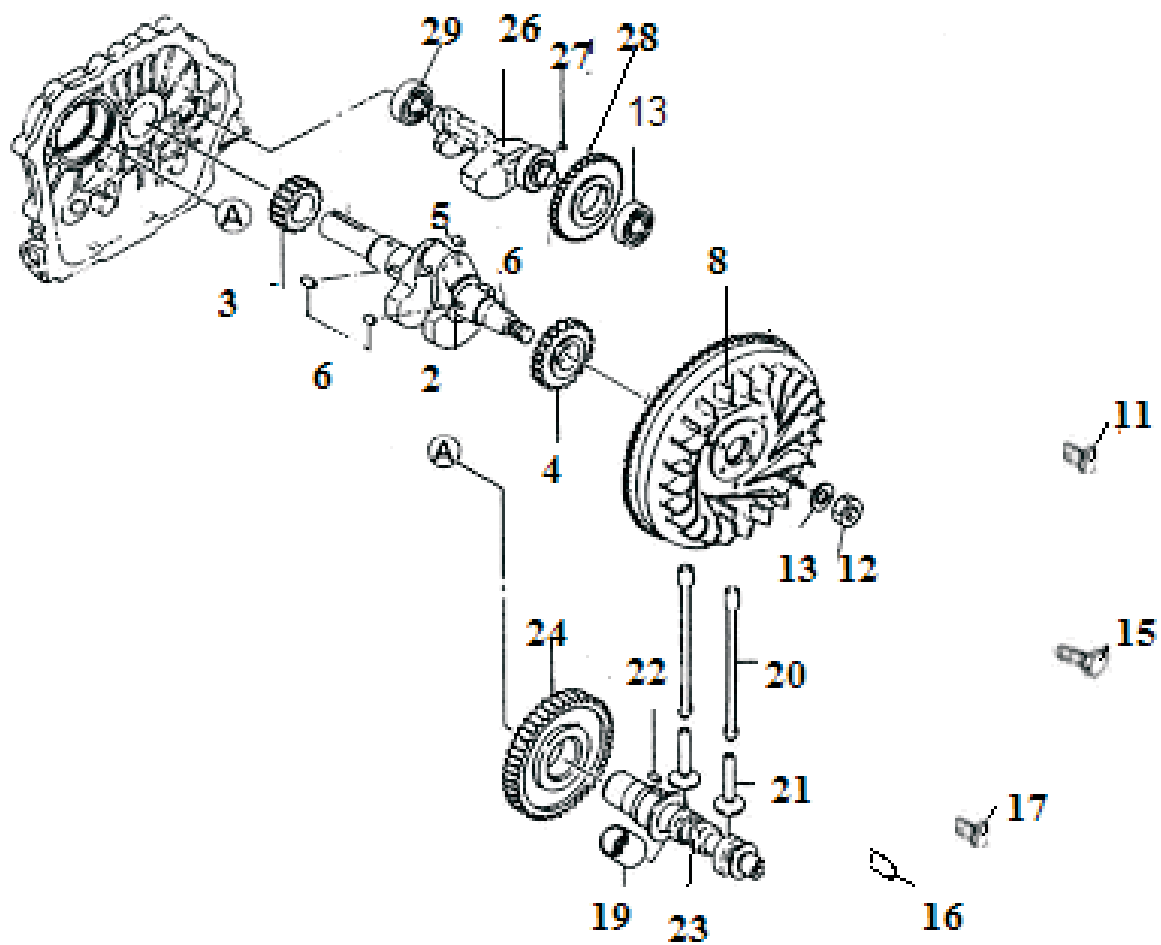
PISTON & CON ROD ASSEMBLY



PISTON & CON ROD ASSEMBLY

Sr. No.	Part No.	Description	Qty.	Remark
*1	P05.0723.040.0.PR	PISTON & CON ROD ASSEMBLY	1	CONSISTING OF SR. NO. 2 TO 11
2	P05.0723.010.0.PR	PISTON ASSEMBLY COMPLETE	1	CONSISTING OF SR. NO. 3,7
*3	CC3.005.50.0.00	PISTON ASSEMBLY WITH PIN	1	CONSISTING OF SR. NO. 4 TO 6
4	CC3.005.59.0.PR	PISTON	1	
5	CC3.005.57.0.PR	PISTON PIN	1	
6	CC3.005.006.0.00	RETAINER CLIP OF PISTON PIN DIA 21	2	
7	CC3.005.30.0.00	PISTON RING GROUP	1	CONSISTING OF SR. NO. 8 TO 10
*8	CC3.005.001.0.00	TOP COMPRESSION CHROME PLATED RING (FOR 78 DIA PISTON)	1	NOT ILLUSTRATED
*9	CC3.005.002.0.00	TAPER FACE SECOND COMPRESSION RING (FOR 78 DIA PISTON)	1	NOT ILLUSTRATED
*10	CC3.005.003.0.00	CHROME CONFORMABLE OIL RING (FOR 78 DIA PISTON)	1	NOT ILLUSTRATED
*11	CC3.003.040.0.00	CON ROD ASSEMBLY COMPLETE	1	CONSISTING OF SR. NO. 12 TO 15
12	CC3.005.008.0.00	CONNECTING ROD	1	
13	CC3.005.007.0.00	CONNECTING ROD BUSH	1	
14	CC3.005.009.0.00	CONNECTING ROD BEARING	2	
15	CC3.005.011.0.00	CONNECTING ROD BOLT M7 x 1 x 38	2	

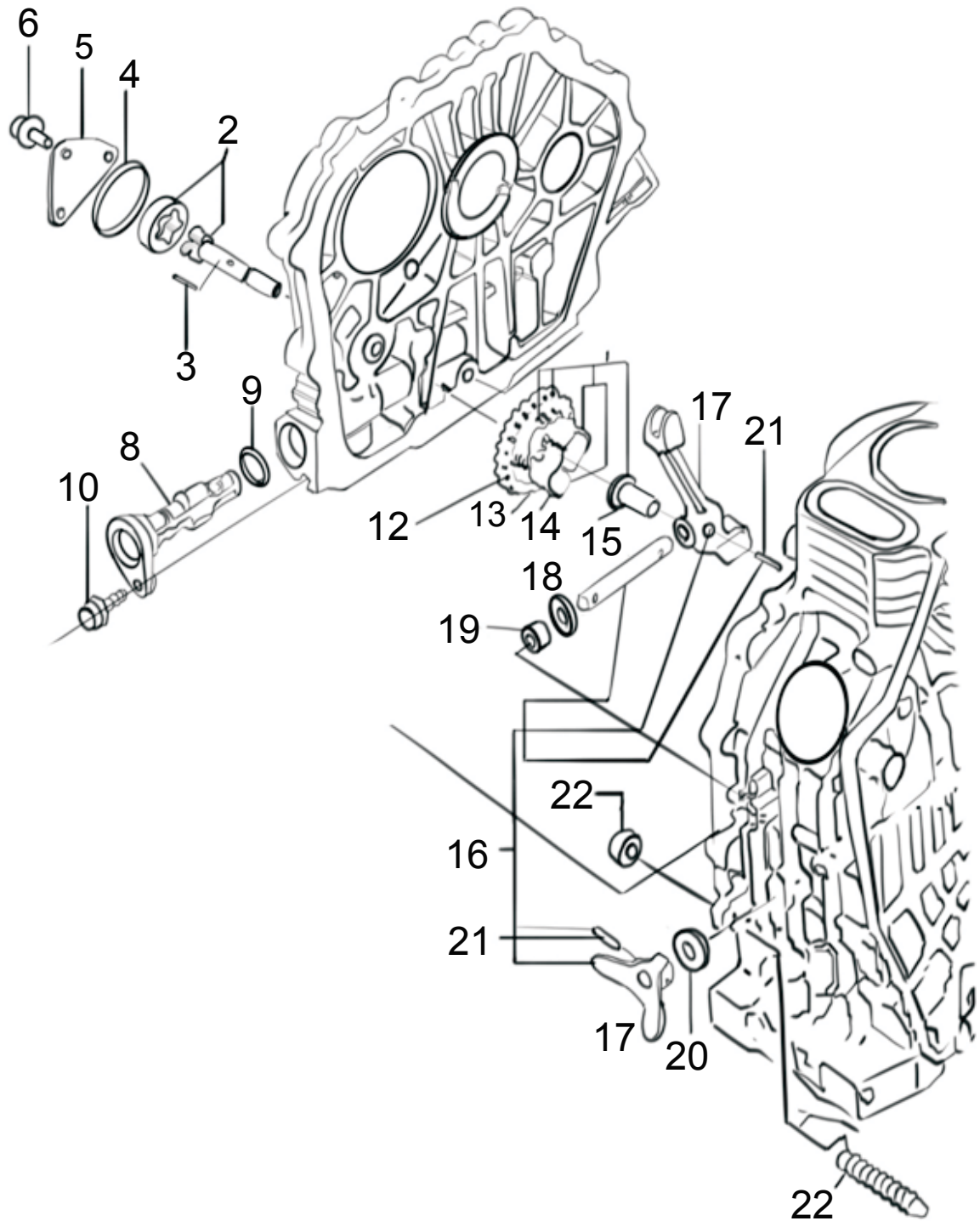
CRANKSHAFT, CAMSHAFT, BALANCER SHAFT & FLYWHEEL ASSEMBLY



CRANKSHAFT, CAMSHAFT, BALANCER SHAFT & FLYWHEEL ASSEMBLY

Sr. No.	Part No.	Description	Qty.	Remark
*1	P05.0707.010.0.PR	CRANKSHAFT ASSEMBLY	1	CONSISTING OF SR. NO. 2 TO 6
2	P05.0707.009.0.PR	CRANKSHAFT WITH SPLINES	1	
3	CC3.006.005.0.00	CRANKSHAFT TIMING GEAR	1	
4	CC3.006.008.0.00	BALANCING SHAFT DRIVING GEAR	1	
5	CC1.003.016.0.00	PLUG 6 x 8	1	
6	CC1.003.013.0.00	KEY 5 x 12	3	
*7	P05.0707.020.0.PR	FLY WHEEL ASSEMBLY	1	CONSISTING OF SR. NO. 8 TO 17
8	CC3.006.010.0.00	FLYWHEEL	1	
12	CC3.006.013.0.00	NUT FLYWHEEL M18	1	
13	CC3.006.012.0.00	FLYWHEEL NUT WASHER	1	
15	CC1.005.33.0.00	FLANGE BOLT M6x 1 x 20	3	
16	CC3.006.017.0.00	CABLE HOLDER CLAMP	1	
17	N11.051.06.0.00	FLANGED SCREW - M6 x 1.0 x 12 mm	1	
*18	CC3.007.10.0.00	CAMSHAFT ASSEMBLY	1	CONSISTING OF SR. NO. 19 TO 24
19	CC1.003.022.0.00	SLEEVE OF FUEL PUMP	1	
20	CC3.007.001.0.00	PUSH ROD	2	
21	CC3.007.002.0.00	TAPPET	2	
22	CC1.003.025.0.00	KEY 4 x 12	1	
23	CC3.007.003.0.00	CAMSHAFT	1	
24	CC3.007.004.0.00	CAMSHAFT TIMING GEAR	1	
*25	CC3.006.010.0.0	BALANCER SHAFT ASSEMBLY	1	CONSISTING OF SR. NO. 26 TO 29
26	CC3.006.001.0.00	BALANCER SHAFT	1	
27	CC1.003.009.0.00	KEY 5 x 7	2	
28	CC3.006.002.0.00	BALANCER SHAFT TIMING GEAR	1	
29	CC3.001.010.0.00	BALL BEARING 6202	2	

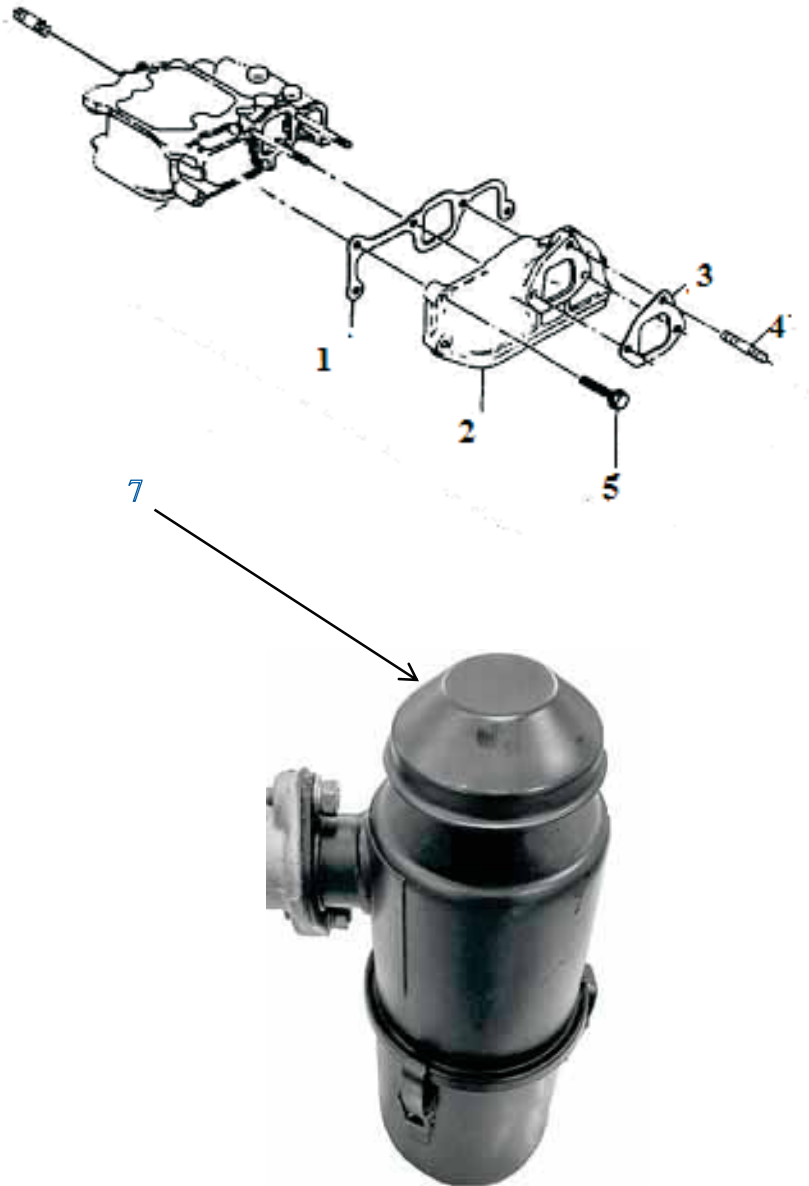
LUBRICATION & SPEED CONTROL SYSTEM



LUBRICATION & SPEED CONTROL SYSTEM

Sr. No.	Part No.	Description	Qty.	Remark
*1	CC3.004.10.0.00	OIL PUMP ASSEMBLY	1	CONSISTING OF SR. NO. 2 TO 6
2	CC3.004.11.0.00	OIL PUMP	1	
3	CC1.004.028.0.00	RETAINING PIN 3 x 16	1	
4	CC3.010.003.0.00	OIL PUMP COVER	1	
5	CC3.010.004.0.0.0	“O” RING 34.5 x 1.8	1	
6	N11.051.06.0.00	FLANGED SCREW - M6 x 8.0 x 12 mm	3	
*7	CC3.004.15.0.00	OIL FILTER	1	CONSISTING OF SR. NO. 8 TO 10
8	CC3.004.16.0.00	LUBE OIL FILTER	1	
9	CC1.300.89.0.00	SEAL RING 20 x 2.65	1	
10	CC1.004.005.0.00	SLINGER BOLT M6 x 1 x 15 8.8	1	
*11	CC3.004.20.0.00	OIL PUMP DRIVING GEAR / GOVERNOR GEAR ASSEMBLY	1	CONSISTING OF SR. NO. 12 TO 15
12	CC3.004.21.0.00	OIL PUMP DRIVING GEAR / GOVERNOR GEAR	1	
13	CC3.004.22.0.00	GOVERNOR WEIGHT	2	
14	CC3.004.23.0.00	GOVERNOR PIN	2	
15	CC1.004.018.0.00	GOVERNOR FORK TAPPET	1	
*16	CC3.004.30.0.00	FORK LEVER ASSEMBLY	1	CONSISTING OF SR. NO. 17 TO 22
17	CC3.012.018.0.00	FORK LEVER	1	
18	CC1.300.96.0.00	PLAIN WASHER M8 OD =18 mm THK.= 1 mm	4	
19	CC3.001.005.0.00	BEARING 7941/8	2	
20	CC3.012.014.0.00	OIL SEAL 8 x 14 x 4	1	
21	CC3.012.011.0.00	STOPPING LEVER PIN 3 x 22	2	
22	CC3.012.015.0.00	FUEL CONTROLLER WITH NUT M 10	1	

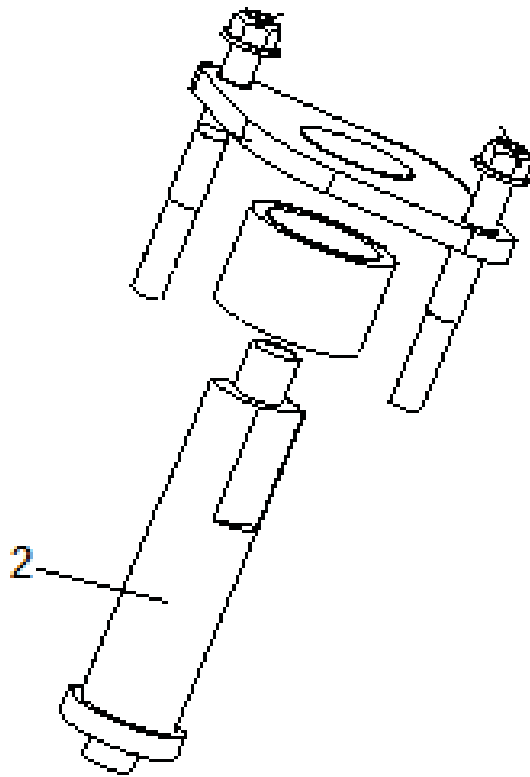
AIR FILTER ASSEMBLY



AIR FILTER ASSEMBLY

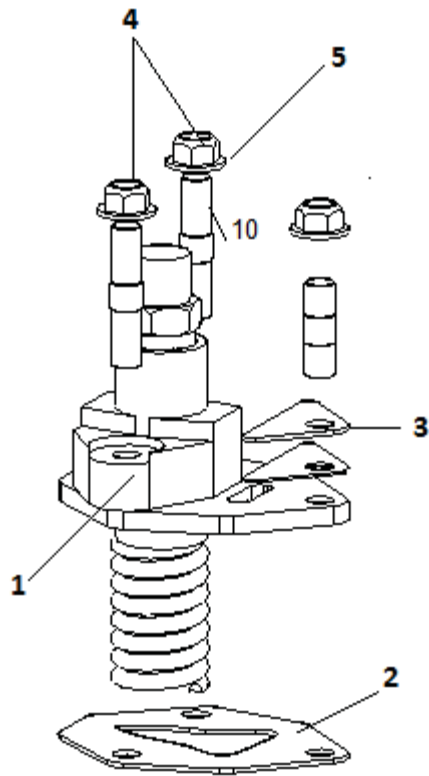
Sr. No.	Part No.	Description	Qty.	Remark
1	CC3.006.21.0.00	INLET MANIFOLD GASKET	1	
2	CC3.006.22.0.00	INLET MANIFOLD	1	
3	CC3.008.004.0.00	AIR CLEANER GASKET	2	
4	CC1.010.008.0.00	FLANGE BOLT M6 x 1 x 25 8.8	1	
5	CC3.008.003.0.00	SET SCREW - M6 X 1 X 22 - 8.8	3	
6	N11.051.02.0.00	FLANGED NUT M 16 x 1.0	3	NOT ILLUSTRATED
7	P05.0713.010.0.PR	WET AIR CLEANER	1	

INJECTOR ASSEMBLY



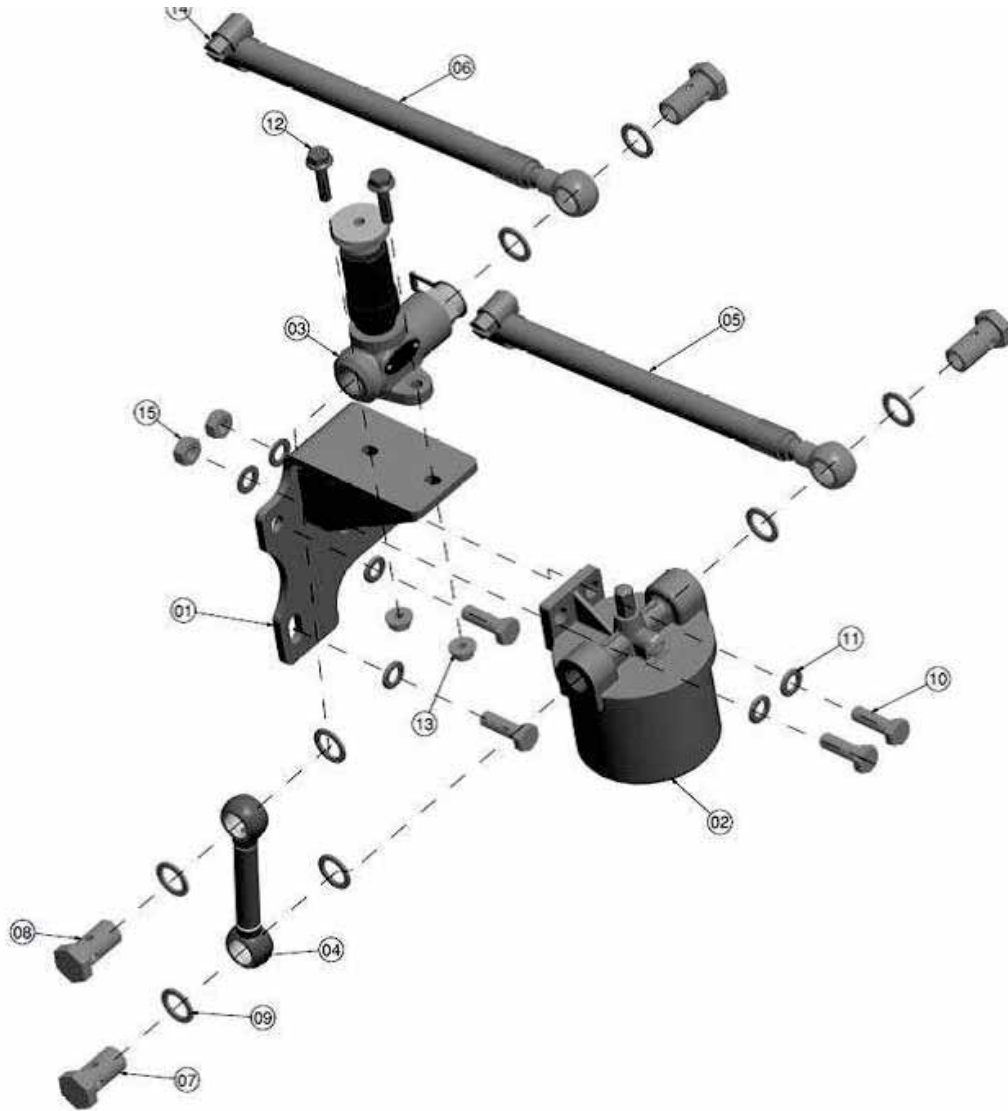
Sr. No.	Part No.	Description	Qty.	Remark
*1	CC1.190.20.0.00	INJECTOR ASSEMBLY FOR CC418 ENGINE 7.5 HP @ 3000 RPM)	1	CONSISTING SR. NO. 2 TO 5
2	CC1.190.06.0.00	INJECTOR FOR CC418 ENGINE (7.5 HP @ 3000 RPM)	1	
3	CC1.190.07.0.00	SPACER SLEEVE FOR INJECTOR	1	NOT ILLUSTRATED
4	CC1.190.08.0.00	MOUNTING FLANGE FOR INJECTOR	1	NOT ILLUSTRATED
5	CC1.190.09.0.00	FUEL OVERFLOW CONNECTION FOR INJECTOR	1	NOT ILLUSTRATED
6	CC1.190.22.0.PR	NOZZLE WASHER (THICKNESS - 4 mm)	1	NOT ILLUSTRATED
7	50.006.06.000	NUT M6 x 1 - GR 8	2	

FUEL INJECTION PUMP ASSEMBLY



Sr. No.	Part No.	Description	Qty.	Remark
1	CC1.190.11.0.00	FUEL INJECTOR PUMP	1	
2	CC1.014.021.0.00	FUEL INJECTOR PUMP ADJUSTING GASKET(0.2)	1	
	CC1.014.022.0.00	FUEL INJECTOR PUMP ADJUSTING GASKET(0.3)	1	
	CC1.014.023.0.00	FUEL INJECTOR PUMP ADJUSTING GASKET(0.4)	1	
	CC1.014.009.0.00	FUEL INJECTOR PUMP ADJUSTING GASKET(0.5)	1	
3	CC1.014.011.0.00	SEALING PLATE GASKET	1	
4	50.066.06.000	NUT - M6 x 1 - GR 0.8	3	
5	50.505.06.000	SPRING WASHER - M6	3	

FUEL FILTER ASSEMBLY



Serviceable Part for Fuel Filter



16

FUEL FILTER ASSEMBLY

Sr. No.	Part No.	Description.	Qty.	Remark
1	P05.0709.066.0.PR	BRACKET FOR VERTICAL HAND PRIMER	1	
2	FA1.031.20.0.00	FUEL FILTER	1	
3	DV0.040.56.0.00	PRIMER PUMP	1	
4	P08.0709.065.0.PR	HOSE PIPE (FUEL FILTER TO PRIMER PUMP)	1	
5	P05.0709.062.0.PR	FUEL PIPE (FUEL TANK TO FUEL FILTER)	1	
6	P05.0709.063.0.PR	FUEL PIPE (PRIMER PUMP TO FIP)	1	
7	50.538.03.000.	1/4" BSP BANJO BOLT (FOR FUEL FILTER)	2	
8	50.504.04.000.	BANJO BOLT(M14) (FOR PRIMER)	2	
9	50.508.12.000.	COPPER WASHER	8	
10	50.002.08.025.	SET BOLT - M8 x1.25 x 25 - 8.8	4	
11	50.506.08.000	WASHER (M8)	6	
12	CC1.010.008.0.00	FLANGE BOLT M6X1X25 8.8	2	
13	N11.051.02.0.00	FLANGED NUT M6 X 1.0	2	
14	2H.112.07.0.00	WARM TYPE CLIP	2	
15	50.006.08.000.	NUT- M8X1.25 - GR.8	2	

Serviceable Part for Fuel Filter

Sr. No.	Part No.	Description	Qty.	Remark
16	FA1.031.02.0.00	FUEL FILTER ELEMENT (0.25 LIT) (MICO - 9 451 037 420) and O ring	1	

HIGH PRESSURE PIPE ASSEMBLY



Sr. No.	Part No.	Description	Qty.	Remark
1	P05.0706.010.0.PR	HIGH PRESSURE PIPE ASSEMBLY	1	

FUEL TANK ASSEMBLY



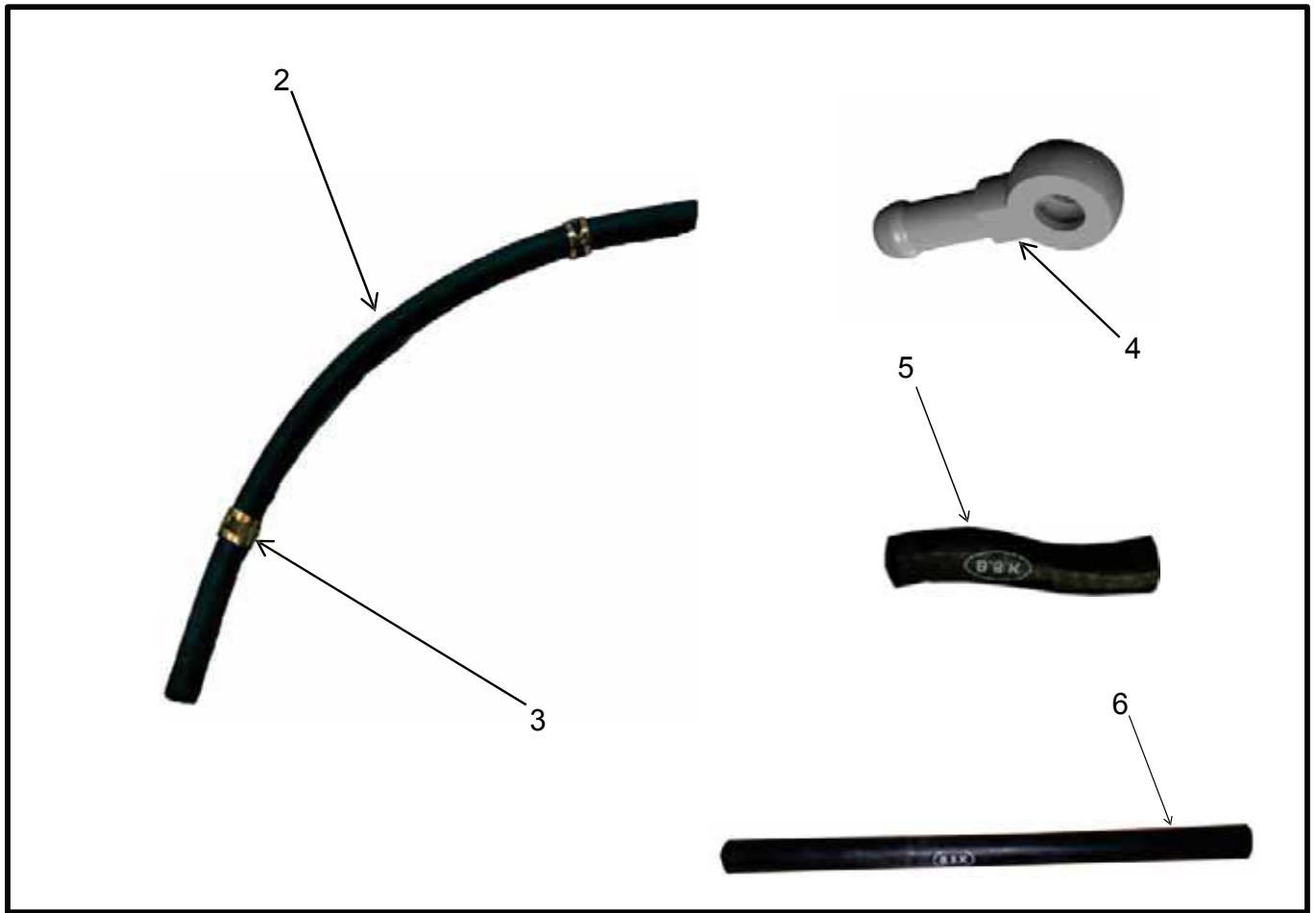
Sr. No.	Part No.	Description	Qty.	Remark
*1	P05.0709.050.0.PR	FUEL TANK WITH BRACKET	1	
2	50.508.08.0.00	COPPER WASHER (10 x 16)	1	NOT ILLUSTRATED
3	CC1.010.006.0.00	FUEL HOSE 50 mm	1	
4	50.519.02.000	HOSE CLIP n16	2	
5	P08.0709.002.0.PR	SPECIAL BANJO FOR FIP	1	
6	P08.0709.004.0.PR	LOCK NUT M10 x 1	1	NOT ILLUSTRATED

EXHAUST SYSTEM ASSEMBLY



Sr. No.	Part No.	Description	Qty.	Remark
1	P05.0718.003.0.PR	EXHAUST SILENCER	1	
2	CC1.151.16.0.00	EXHAUST GASKET	1	NOT ILLUSTRATED
3	50.006.08.000	NUT M8 x 1.25 - GR 8.8	2	NOT ILLUSTRATED

INJECTOR LEAK OFF ASSEMBLY



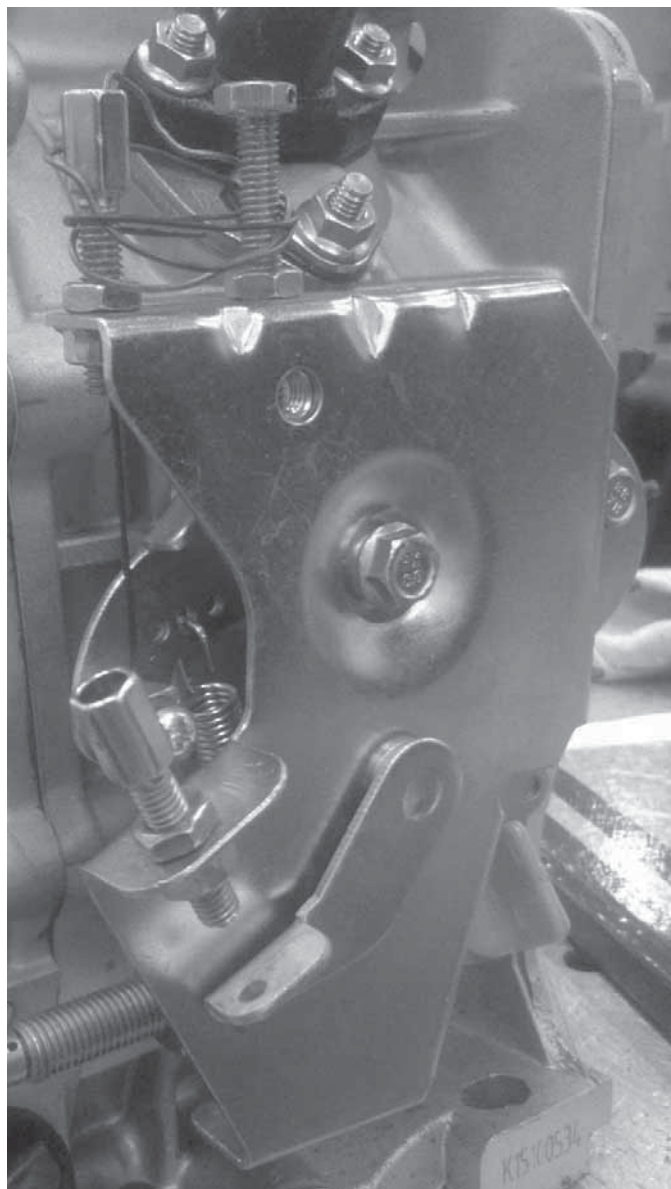
Sr. No.	Part No.	Description	Qty.	Remark
1	P08.0708.010.0.PR	LEAK OFF PIPE ASSEMBLY	1	NOT ILLUSTRATED
2	CC1.010.012.0.00	FUEL HOSE 200 mm FROM INJECTOR TO TANK	1	
3	CC1.010.015.0.00	HOSE CLIP n8	2	
4	P08.0708.001.0.PR	SPECIAL BANJO	1	
5	CC1.010.021.0.00	FUEL HOSE ID 7, OD 15, L 50 MM	1	
6	CC1.010.031.0.00	FUEL HOSE ID 6, OD 11, L 180 MM	1	

RECOIL STARTER ASSEMBLY



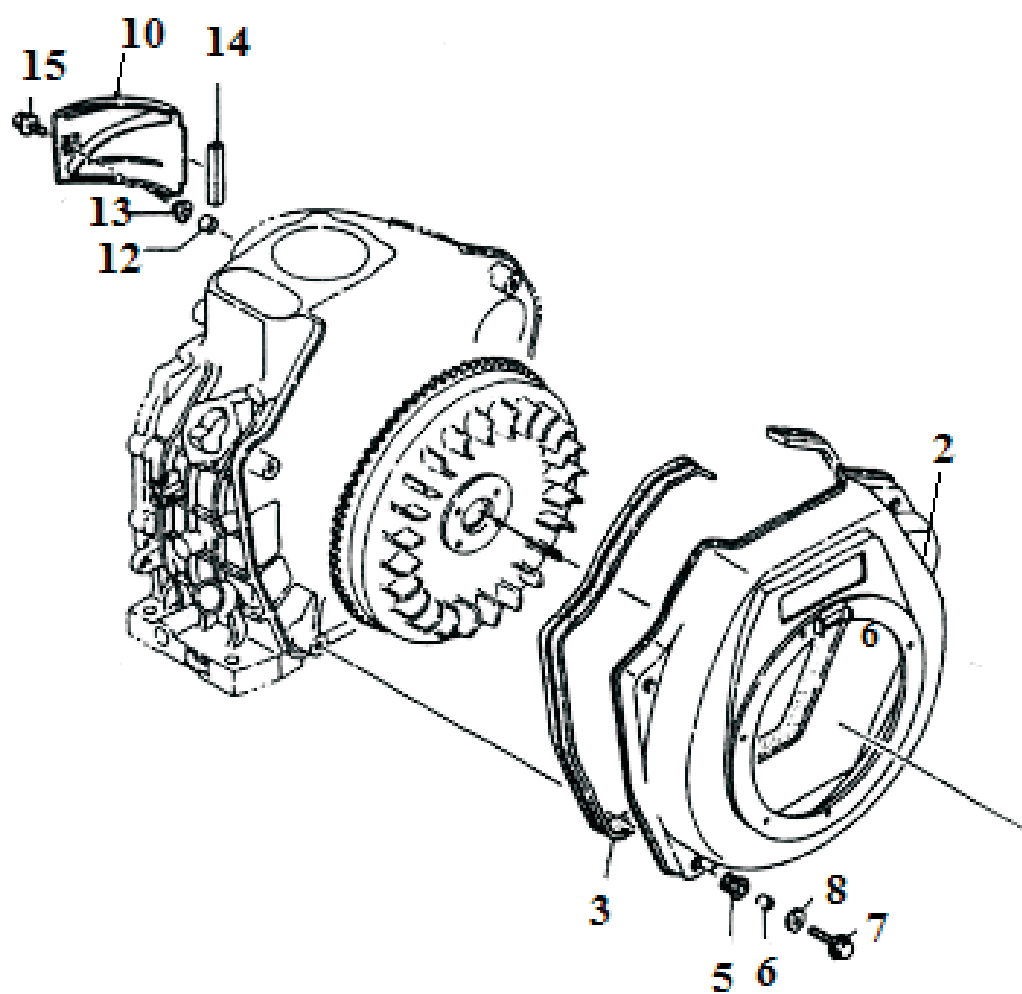
Sr. No.	Part No.	Description	Qty.	Remark
*1	CC3.015.20.0.00	RECOIL STARTER ASSEMBLY	1	

VARIABLE SPEED MECHANISM



Sr. No.	Part No.	Description	Qty.	Remark
*1	P05.0721.010.0.PR	VARIABLE SPEED MECHANISM	1	

WIND LEADING CASE ASSEMBLY (COWLING ASSEMBLY)



WIND LEADING CASE ASSEMBLY (COWLING ASSEMBLY)

Sr. No.	Part No.	Description	Qty.	Remark
*1	CC3.018.20.0.00	WIND LEADING CASE ASSEMBLY	1	CONSISTING OF SR. NO. 2 TO 4,7,8
2	CC3.018.002.0.00	WIND LEADING CASE	1	
3	CC3.018.001.0.00	SHOCK PADS	1	
*4	CC3.018.30.0.00	COLLAR OF WIND LEADING CASE WITH SHOCK ABSORBER	4	CONSISTING OF SR. NO. 5,6
5	CC3.018.003.0.00	SHOCK ABSORBER	1	
6	CC3.018.004.0.00	COLLAR OF WIND LEADING CASE	1	
7	CC1.010.008.0.00	FLANGE BOLT M6x1x25 8.8	4	
8	CC1.005.003.0.00	PLAIN WASHER M6 (GB90-85) OD =18mm THK. = 1.5 mm	4	
*9	CC3.018.10.0.00	WIND LEADING PLATE ASSEMBLY	1	CONSISTING OF SR. NO. 10,11,14,15
10	CC3.018.16.0.00	WIND LEADING PLATE	1	
*11	CC3.018.40.0.00	COLLAR OF WIND LEADING PLATE WITH PAD	1	CONSISTING OF SR. NO. 12,13
12	CC3.018.17.0.00	COLLAR OF WIND LEADING PLATE	1	
13	CC3.018.18.0.00	PAD	1	
14	CC3.018.19.0.00	SHOCK ISOLATION PIECE OF WIND LEADING PLATE	1	
15	N11.051.07.0.00	FLANGED SCREW - M6 x 1.0 x 16 mm	1	



**Engine Parts
Catalogue - 8HP**

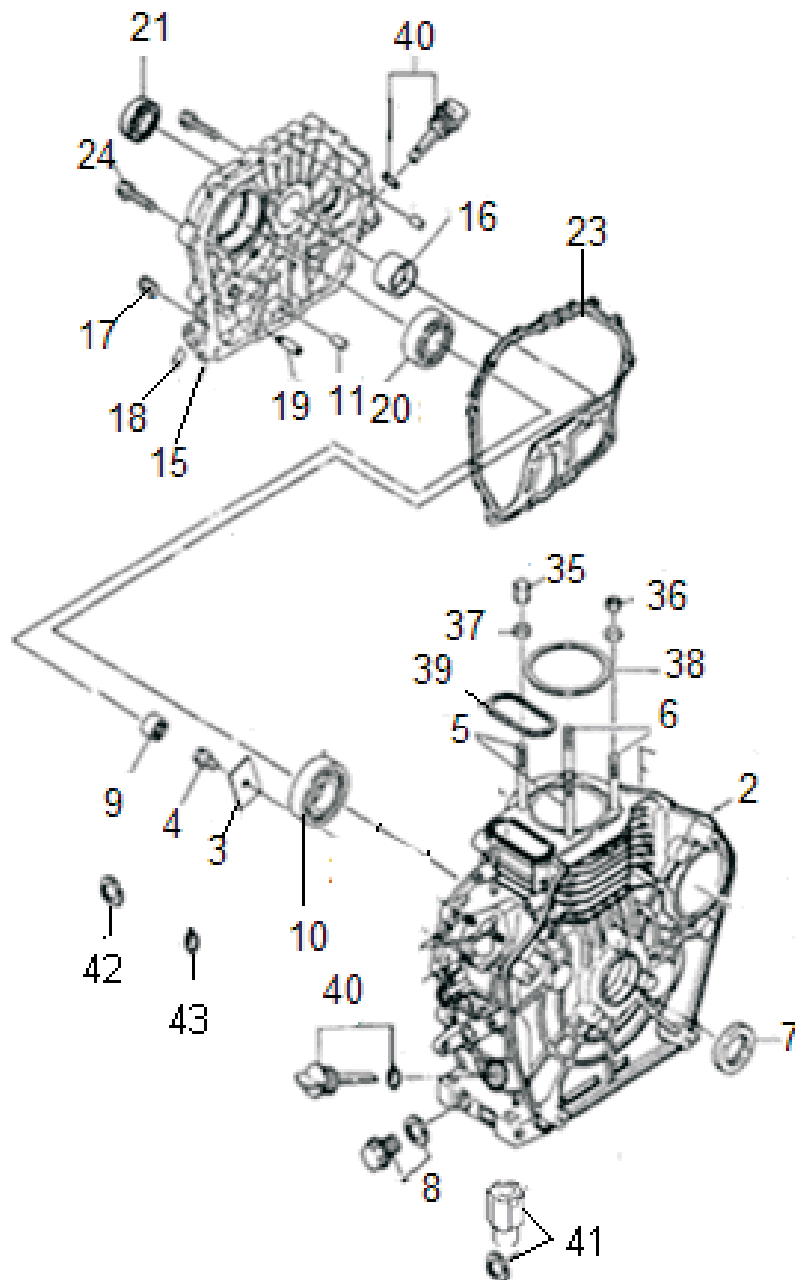
MIN T

Farm Mechanisation Business Unit

CONTENTS

Sr.No.	Description	ASSEMBLY CODE	PAGE NO
*1	ENGINE BLOCK	CC1.001.80.000	48 - 49
2	CYLINDER HEAD ROCKER ARM & COVER ASSEMBLY	P08.0701... P08.0702... P08.0703...	50 - 51
3	PISTON & CRANK ASSEMBLY	P08.0723...	52 - 53
4	LUBRICATION & SPEED CONTROL SYSTEM	CC1.004...	54 - 55
5	AIR FILTER ASSEMBLY	P08.0710...	56 - 57
6	INJECTOR ASSEMBLY	CC1.190...	58
7	FUEL INJECTION PUMP ASSEMBLY	P08.0705...	59
8	FUEL FILTER ASSEMBLY	P08.0709.030.0.PR	60 - 61
9	HIGH PRESSURE PIPE ASSEMBLY	P08.0706.010.0.PR	62
10	FUEL TANK AND BRACKET	P08.0709. . .	63
11	EXHAUST SYSTEM	P08.718.003.0.PR	64
12	INJECTOR LEAK OF ASSEMBLY	P08.0708...	65
13	RECOIL STARTER ASSEMBLY	CC1.196.10.0.00	66
14	VARIABLE SPEED MECHANISM	P08.0721.010.0.PR	67
15	WIND LEADING CASE ASSEMBLY	CC1.018...	68 - 69

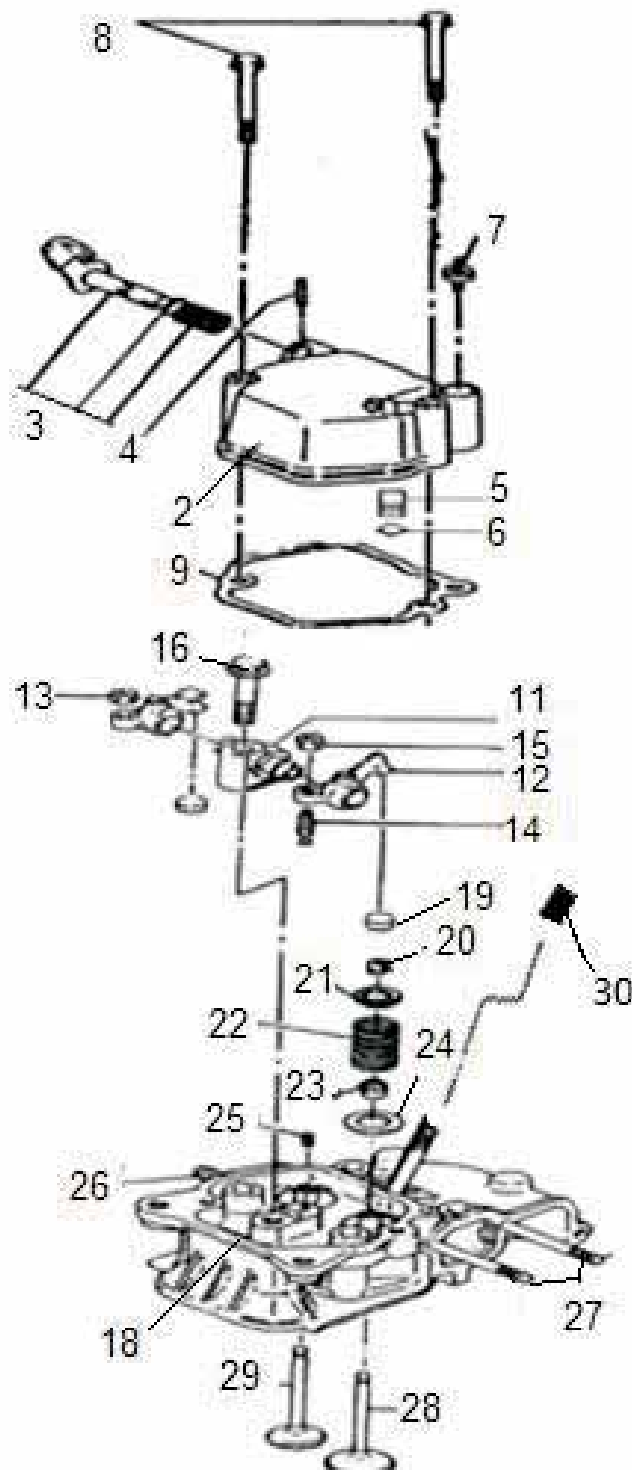
ENGINE BLOCK (CRANK CASE)



ENGINE BLOCK (CRANK CASE)

Sr. No.	Part No.	Description	Qty.	Remark
*1	CC1.001.10.0.00	CYLINDER BLOCK/CRANKCASE ASSEMBLY	1	CONSISTING OF SR.NO. 2 TO 13 AND 42-43
2	CC1.001.010.0.00	CYLINDER BLOCK	1	
3	CC1.001.022.0.00	THRUST PIECE	1	CONSISTING OF SR. NO. 4,42 & 43
4	50.003.08.0.14	SET SCREW M8 x1.25 x 14	1	
5	CC1.001.052.0.00	CYLINDER HEAD BOLTS (LONG) M10 x 118	2	
6	CC1.001.053.0.00	CYLINDER HEAD BOLTS (SHORT) M10 x 105	2	
7	CC1.001.11.0.00	REAR OIL SEAL (35x 50 x 8)	1	
8	CC1.001.054.0.00	OIL DRAIN PLUG M16x 15 WITH GASKET	2	
9	CC1.001.024.0.00	NEEDLE BEARING 7941/15	1	
10	CC1.001.025.0.00	BALL BEARING 308	1	
11		RETAINING PIN 8 x 12	2	
*12	CC1.003.007.0.00	BEARING 203	1	
*13	CC1.004.20.0.00	FORK LEVER ASSEMBLY	1	
*14	CC1.001.40.0.00	CRANKCASE COVER ASSEMBLY	1	CONSISTING SR. NO. 15 TO 24
15		CRANKCASE COVER	1	
16		MAIN BUSHING	1	
17		INNER HEXAGON PLUG G1/8"	1	
18		ALUMINUM PLUG Ø 8 x 8	1	
19		OIL GUIDE	1	
20	CC1.001.027.0.00	BEARING 207	1	
21	CC1.001.033.0.00	FRONT OIL SEAL 35 x 50 x 10	1	
*22	CC1.003.007.0.00	BEARING 203	1	
23	CC1.001.026.0.00	CRANKCASE COVER GASKET	1	
24	50.002.08.035	SET BOLT M8 x 1.25 x 35 - 8.8	16	
35	CC1.001.003.0.00	CYLINDER HEAD NUTS (LONG) M10 x 1.5	2	
36	CC1.001.004.0.00	CYLINDER HEAD NUTS (SHORT) M10 x 1.5	2	
37	CC1.001.005.0.00	CYLINDER HEAD NUT WASHER M10 OD = 20MM THK = 3	2	
38	CC1.001.061.0.00	CYLINDER HEAD GASKET 0.1 mm	1	
	CC1.001.062.0.00	CYLINDER HEAD GASKET 0.2 mm	1	
	CC1.001.063.0.00	CYLINDER HEAD GASKET 0.3 mm	1	
	CC1.001.064.0.00	CYLINDER HEAD GASKET 0.4 mm	1	
	CC1.001.065.0.00	CYLINDER HEAD GASKET 0.5 mm	1	
39	CC1.001.007.0.00	RECTANGLE RING GASKET 4.1 x 4.25 x 2.3	1	
40	CC1.001.018.0.00	OIL DIPSTICK WITH "O" RING	2	
41	CC1.001.036.0.00	DRAIN BOLT EXTENSION WITH WASHER	1	
42	50.506.08.000	PLAIN WASHER M8 OD=16 mm THK.=1.5 mm	1	
43	50.505.08.0.00	SPRING WASHER M8	1	
44	P08.0714.001.0.PR	COVER PLATE	1	NOT ILLUSTRATED

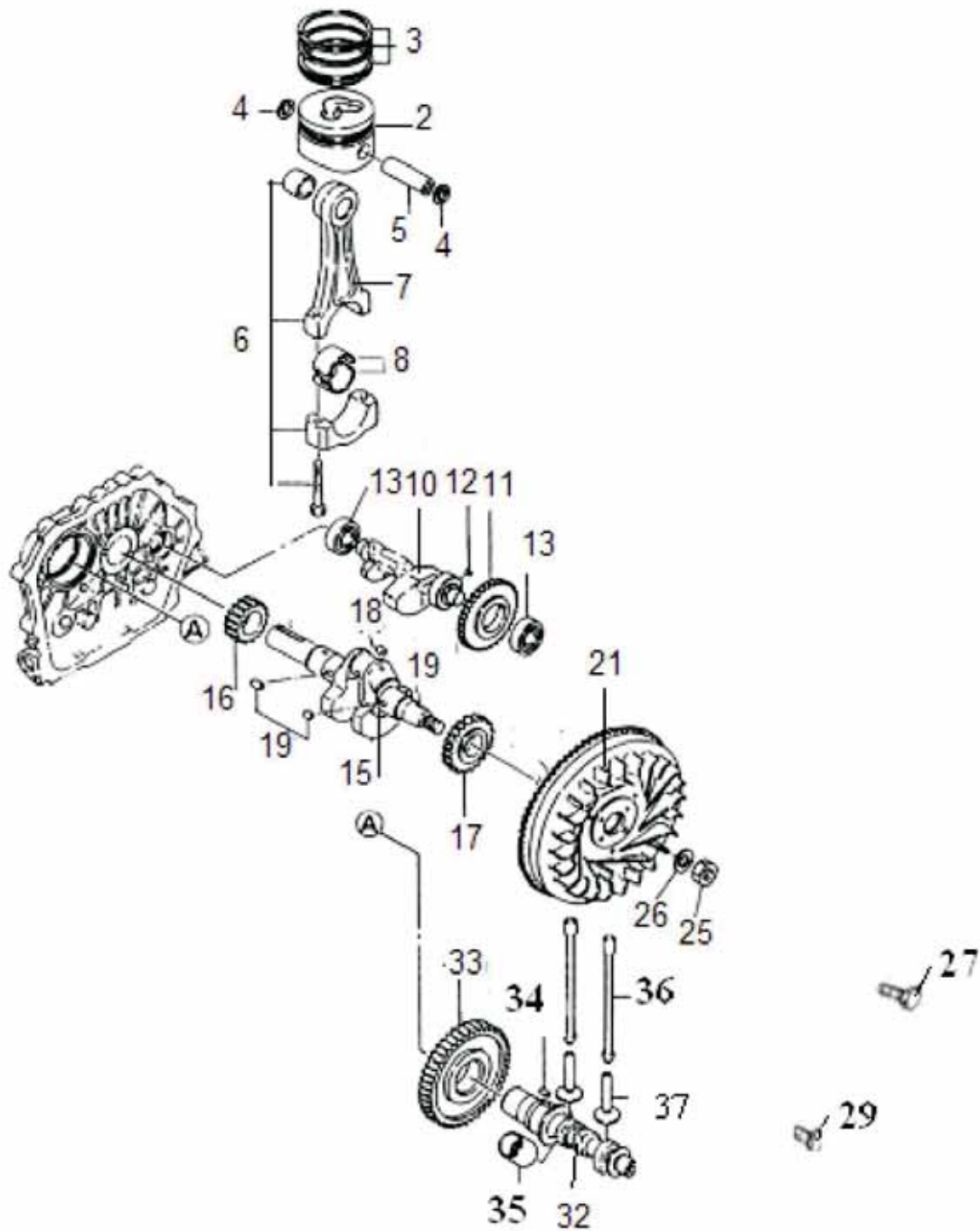
CYLINDER HEAD ROCKER ARM & COVER ASSEMBLY



CYLINDER HEAD ROCKER ARM & COVER ASSEMBLY

Sr. No.	Part No.	Description	Qty.	Remark
*1	CC1.002.10.0.00	ROCKER COVER ASSEMBLY	1	CONSISTING OF SR. NO. 2 TO 9
2	CC1.002.007.0.00	CYLINDER HEAD COVER	1	
3	CC3.003.005.0.00	DECOMPRESSION SHAFT	1	
4		RETAINING CLIP 3 x 16	1	
5	CC3.003.010.0.00	BREATHER ASSEMBLY	1	
6	CC1.002.028.0.00	"O" RING (12 x 1.9)	1	
7	50.002.06.070	SET BOLT M6 x 1 x 70 - 8.8	3	
8	CC1.002.002.0.00	OILING SCREW PLUG	1	
9	CC1.002.008.0.00	CYLINDER HEAD COVER GASKET	1	
*10	CC1.002.20.0.00	ROCKER ARM ASSEMBLY	1	CONSISTING SR. NO. 11 TO 16
11	CC1.002.60.0.00	ROCKER ARM BODY WITH SHAFT	1	
12	CC1.002.009.0.00	ROCKER ARM	2	
13	CC1.002.052.0.00	CLIP A	2	
14	CC1.002.046.0.00	ROCKER ARM SCREW M6 x 1 x 32	2	
15	CC3.002.013.0.00	ROCKER NUT M6	2	
16	50.002.08.045	SET BOLT ROCKER ARM- M8 x 1.25 x 45- 8.8	2	
*17	CC1.002.30.0.00	CYLINDER HEAD ASSEMBLY	1	CONSISTING SR. NO 18 TO 29
18	CC1.002.019.0.00	CYLINDER HEAD	1	
19	CC1.002.011.0.00	ADJUSTING VALVE SPACER	2	
20	CC1.002.012.0.00	VALVE CLIP	4	
21	CC1.002.013.0.00	VALVE SPRING SEAL	2	
22	CC1.002.014.0.00	VALVE SPRING	2	
23	CC1.002.015.0.00	VALVE GUIDE OIL SEAT	2	
24	CC1.002.016.0.00	VALVE SPRING WASHER	2	
25	CC3.002.008.0.00	PIN 4 x 8	1	
26	CC1.002.048.0.00	DOUBLE ENDED SET SCREW M8 x 1.25 x 36	2	
27	CC1.002.049.0.00	DOUBLE ENDED SET SCREW M6 x 1 x 90	2	
28	CC1.002.021.0.00	INLET VALVE	1	
29	CC1.002.022.0.00	EXHAUST VALVE	1	
30	06.072.03.0.00	SPACER (BAR) FOR ACTUATOR - Injector	2	

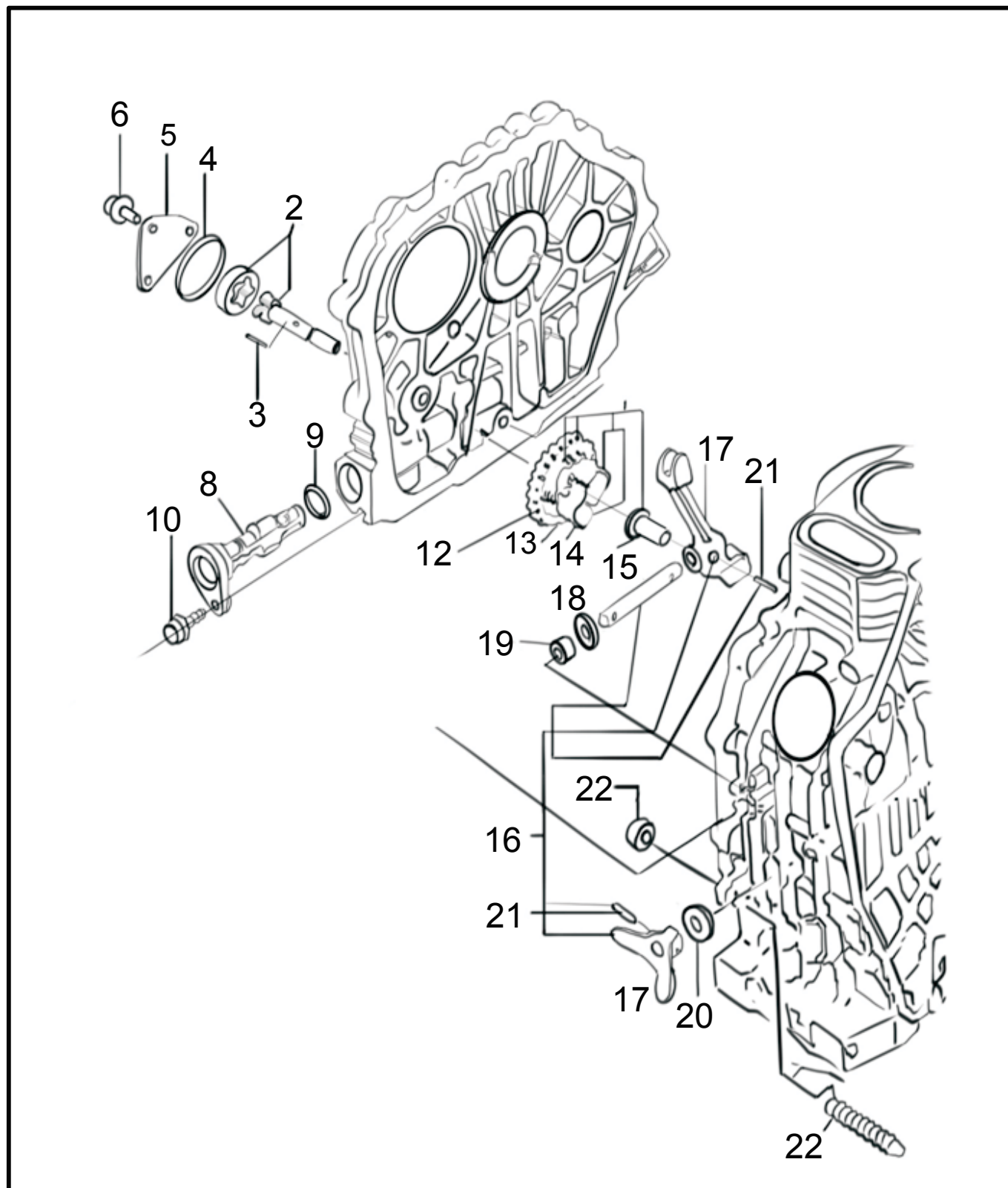
PISTON & CRANK ASSEMBLY



PISTON & CRANK ASSEMBLY

Sr. No.	Part No.	Description	Qty.	Remark
	P08.0723.040.0.PR	PISTON & CON ROD ASSEMBLY	1	
	P08.0723.010.0.PR	PISTON ASSEMBLY COMPLETE	1	
*1	CC1.191.50.0.00	PISTON ASSEMBLY WITH PIN	1	CONSISTING SR. NO. 2 TO 5
2	CC1.191.12.0.PR	PISTON FOR CC418 ENGINE WITH 18 CC CAVITY VOLUME	1	
3	CC1.191.30.0.PR	PISTON RING SET	1	
	CC1.191.03.0.PR	TOP COMPRESSION CHROME PLATED RING	1	
	CC1.191.04.0.PR	TAPER FACE SECOND COMPRESSION RING (FOR 86 DIA PISTON)	1	
	CC1.191.05.0.PR	CHROME CONFORMABLE OIL RING (FOR 86 DIA PISTON)	1	
4	CC1.191.07.0.PR	CIRCLIP FOR 86 DIA PISTON	2	
5	CC1.191.06.0.PR	GUDGEON PIN (FOR 86 DIA PISTON)	1	
*6	CC1.003.040.0.00	CON ROD ASSEMBLY COMPLETE	1	CONSISTING OF SR. NO 7 & 8
7	CC1.003.005.0.00	CONNECTING ROD BODY	1	
8	CC1.003.006.0.00	CONNECTING ROD BUSH	1	
*9	CC1.003.40.0.00	BALANCING SHAFT ASSEMBLY	1	CONSISTING OF SR. NO 10 -12
10	CC1.003.008.0.00	BALANCING SHAFT	1	
11	CC1.003.010.0.00	BALANCING SHAFT TIMING GEAR	1	
12	CC1.003.009.0.00	KEY 5 x 7 (GB 1096-2003)	2	
13	CC1.003.007.0.00	BEARING 203	2	
*14	P08.0707.10.0.PR	CRANKSHAFT ASSEMBLY	1	CONSISTING OF SR.NO. 15 TO 19
15	P08.0707.009.0.PR	CRANKSHAFT WITH SPLINES	1	
16	CC1.003.012.0.00	CRANKSHAFT TIMING GEAR	1	
17	CC1.003.017.0.00	BALANCING SHAFT DRIVING GEAR	1	
18	CC1.003.016.0.00	PLUG 6 x 8	1	
19	CC1.003.013.0.00	KEY 5 x 12 (GB 1096-2003)	2	
*20	P08.0707.020.0.PR	FLYWHEEL ASSEMBLY	1	CONSISTING OF SR. NO. 21 TO 30
21	CC1.003.028.0.00	FLYWHEEL	1	
25	CC1.003.020.0.00	NUT FLYWHEEL M18	1	
26	CC1.003.46.0.00	FLYWHEEL NUT WASHER M18 OD=36mm	1	
27	50.003.06.020.	SET SCREW M6 x 1 x 20	3	
29	50.003.06.012	SET SCREW M6 x 1 x 12	1	
*31	CC1.003.70.0.00	CAMSHAFT ASSEMBLY	1	CONSISTING OF SR. NO. 32 TO 34
32	CC1.003.026.0.00	CAMSHAFT	1	
33	CC1.003.027.0.00	CAMSHAFT TIMING GEAR	1	
34	CC1.003.025.0.00	KEY 4 x 12 (GB 1096-2003)	1	
35	CC1.003.022.0.00	SLEEVE OF FUEL PUMP ROD	1	
36	CC1.003.023.0.00	PUSH ROD	2	
37	CC1.003.024.0.00	TAPPET	2	
	CC1.003.011.0.00	BOLT FOR F SHAFT ACCOMPANY WITH ENGINE	1	
	CC1.003.014.0.00	KEY 6 x 63 (GB 1096-2003)	2	
	CC1.003.019.0.00	FLYWHEEL NUT GASKET	1	

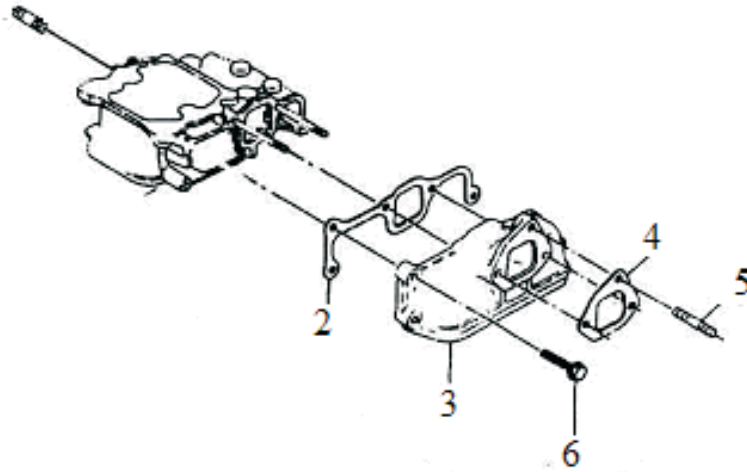
LUBRICATION & SPEED CONTROL SYSTEM



LUBRICATION & SPEED CONTROL SYSTEM

Sr. No.	Part No.	Description	Qty.	Remark
*1	CC1.004.40.0.00	OIL PUMP ASSEMBLY	1	CONSISTING OF SR. NO. 2 TO 6
2		OIL PUMP	1	
3		PIN 3 x 16	1	
4		OIL PUMP COVER	1	
5		"O" RING 34.5 x 1.8	1	
6	50.003.06.012	SET SCREW M6 x 1 x 12 - 8.8	3	
*7	CC1.004.50.0.00	OIL FILTER		CONSISTING OF SR. NO. 8 TO 10
8		LUBE OIL FILTER	1	
9		SEAL RING 20 x 2.65	1	
10	50.003.06.015	SET SCREW M6 x 1 x 15 - 8.8	1	
*11	CC1.004.10.0.00	OIL PUMP DRIVING GEAR / GOVERNOR GEAR ASSEMBLY	1	CONSISTING OF SR. NO. 12 TO 15
12		OIL PUMP DRIVING GEAR / GOVERNOR GEAR	1	
13		FLY BLOCK	2	
14		FLY BLOCK PIN	2	
15	CC1.004.018.0.00	GOVERNOR FORK TAPPET	1	
*16	CC1.004.20.0.00	FORK LEVER ASSEMBLY	1	CONSISTING OF SR. NO. 17 TO 21
17		FORK LEVER	1	
18		PLAIN WASHER M8 O.D =18 mm THK.= 1 mm	4	
19		BEARING 7941/8	2	
20		OIL SEAL 8 x 14 x 4	1	
21		GEAR LOCK PIN 3 x 22	2	
22	CC1.004.023.0.00	FUEL CONTROLLER WITH NUT M 10	1	

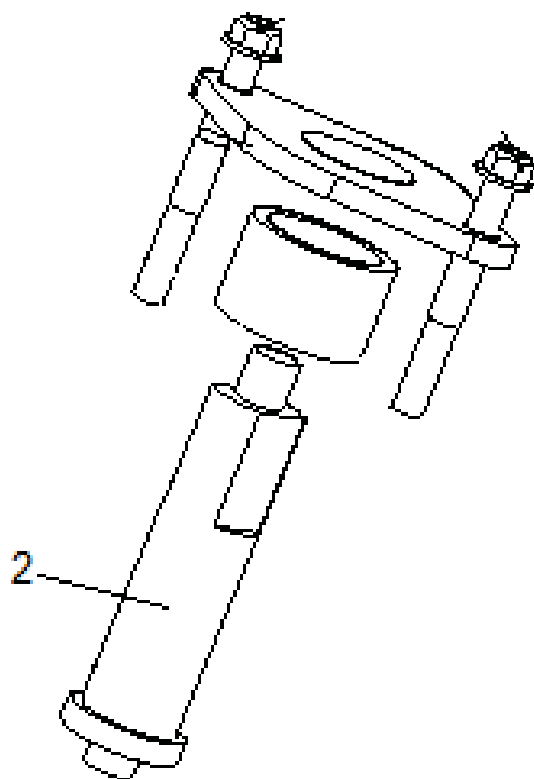
AIR FILTER ASSEMBLY



AIR FILTER ASSEMBLY

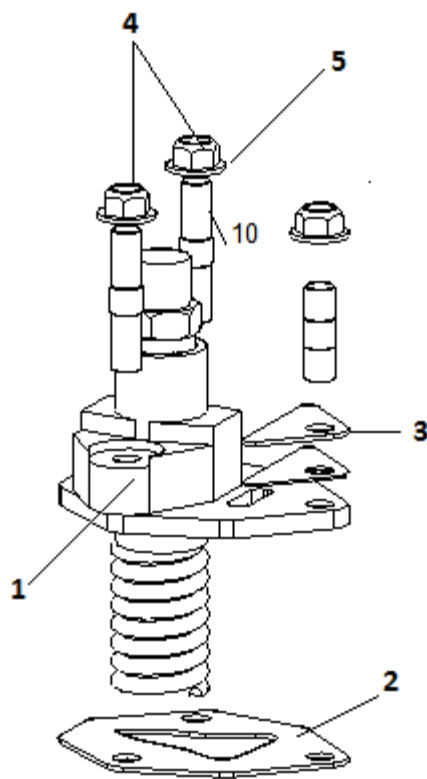
Sr. No.	Part No.	Description	Qty.	Remark
1	CC1.006.10.0.00	INLET MANIFOLD ASSEMBLY	1	CONSISTING OF SR. NO. 2 TO 7
2	CC1.006.026.0.00	INLET MANIFOLD GASKET	1	
3	CC1.006.027.0.00	INLET MANIFOLD	1	
4	CC1.006.003.0.00	AIR CLEANER GASKET	2	
5	CC1.006.004.0.00	AIR CLEANER DOUBLE ENDED SET SCREW M6 x 25 x 1	1	
6	50.003.06.0.25	SET SCREW M6 x 1.0 x 25- 8.8	1	
7	P08.0710.001.0.PR	BEND PIPE FOR AIR FILTER	1	
8	P08.0713.010.0.PR	AIR FILTER ASSEMBLY	1	

INJECTOR ASSEMBLY



Sr. No.	Part No.	Description	Qty.	Remark
*1	CC1.190.20.0.00	INJECTOR ASSEMBLY FOR CC418 ENGINE (7.5 HP @ 3000 RPM)	1	CONSISTING SR. NO. 2 TO 5
2	CC1.190.06.0.00	INJECTOR FOR CC418 ENGINE (7.5 HP @ 3000 RPM)	1	
3	CC1.190.07.0.00	SPACER SLEEVE FOR INJECTOR	1	NOT ILLUSTRATED
4	CC1.190.08.0.00	MOUNTING FLANGE FOR INJECTOR	1	NOT ILLUSTRATED
5	CC1.190.09.0.00	FUEL OVERFLOW CONNECTION FOR INJECTOR	1	NOT ILLUSTRATED
6	CC1.190.22.0.PR	NOZZLE WASHER (THICKNESS - 4 mm)	1	NOT ILLUSTRATED
7	50.006.20.000	NUT M6 x 1 - GR 8	2	

FUEL INJECTION PUMP ASSEMBLY

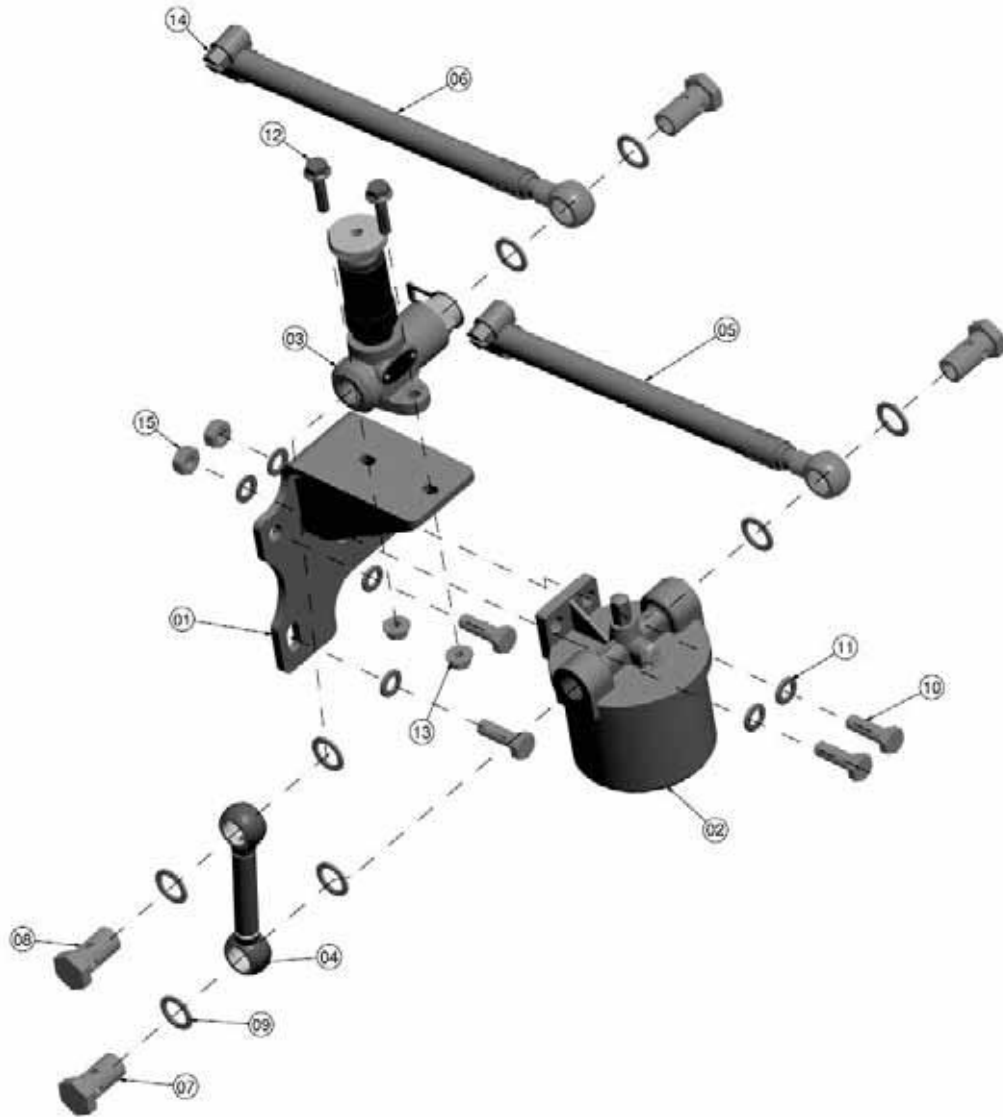


Sr. No.	Part No.	Description	Qty.	Remark
1	CC1.190.11.0.00	FUEL INJECTOR PUMP	1	
2	CC1.014.021.0.00	FUEL INJECTOR PUMP ADJUSTING GASKET(0.2)	1	
	CC1.014.022.0.00	FUEL INJECTOR PUMP ADJUSTING GASKET(0.3)	1	
	CC1.014.023.0.00	FUEL INJECTOR PUMP ADJUSTING GASKET(0.4)	1	
	CC1.014.009.0.00	FUEL INJECTOR PUMP ADJUSTING GASKET(0.5)	1	
3	CC1.014.011.0.00	SEALING PLATE GASKET	1	
4	50.006.06.000	NUT - M6 x 1 - GR 8	3	
5	50.505.06.000	SPRING WASHER - M6	3	

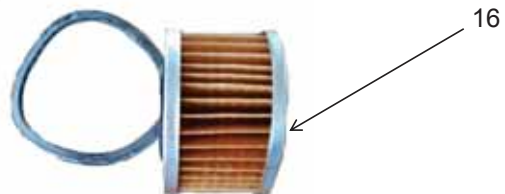
FUEL FILTER ASSEMBLY

FUEL FILTER ASSEMBLY FOR VERTICAL PRIMER

KIT GROUP :- P08.0709.030.0.PR



Serviceable Part for Fuel Filter



FUEL FILTER ASSEMBLY

Sr. No.	Part No.	Description.	Qty.	Remark
1	P08.0709.066.0.PR	BRACKET FOR VERTICAL HAND PRIMER	1	
2	FA1.031.20.0.00	FUEL FILTER	1	
3	DV0.040.56.0.00	PRIMER PUMP	1	
4	P08.0709.065.0.PR	HOSE PIPE (FUEL FILTER TO PRIMER PUMP)	1	
5	P08.0709.062.0.PR	FUEL PIPE (FUEL TANK TO FUEL FILTER)	1	
6	P08.0709.063.0.PR	FUEL PIPE (PRIMER PUMP TO FIP)	1	
7	50.538.03.000.	1/4" BSP BANJO BOLT (for fuel filter)	2	
8	50.504.04.000.	BANJO BOLT (M14) (for hand primer)	2	
9	50.508.12.000.	COPPER WASHER	8	
10	50.002.08.025.	SET BOLT - M8 x1.25 x 25 - 8.8	4	
11	50.506.08.000.	WASHER (M8)	6	
12	CC1.010.008.0.00	FLANGE BOLT M6 x 1 x 25 8.8	2	
13	N11.051.02.0.00	FLANGE NUT M6 x 1.0	2	
14	2H.112.07.0.00	WARM TYPE CLIP	2	
15	50.006.08.000	NUT- M8 x 1.25	2	

Serviceable Part for Fuel Filter

Sr. No.	Part No.	Description	Qty.	Remark
16	FA1.031.02.0.00	FUEL FILTER ELEMENT (0.25 LIT) (MICO - 9 451 037 420) and O ring	1	

HIGH PRESSURE PIPE ASSEMBLY



Sr. No.	Part No.	Description	Qty.	Remark
1	P08.0706.010.0.PR	HIGH PRESSURE PIPE ASSEMBLY	1	

FUEL TANK ASSEMBLY



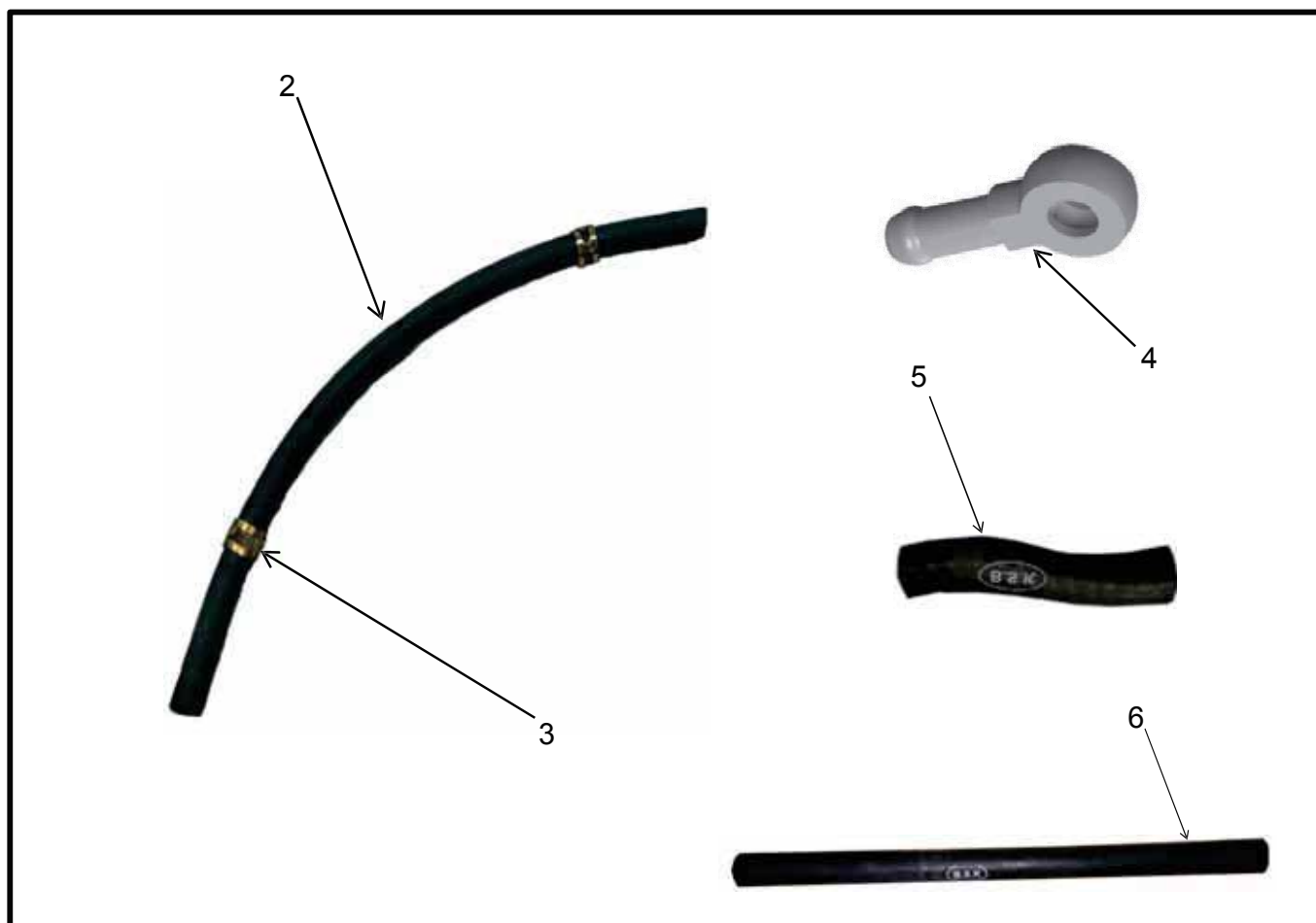
Sr. No.	Part No.	Description	Qty.	Remark
*1	P08.0709.050.0.PR	FUEL TANK WITH BRACKET	1	
2	50.508.08.0.00	COPPER WASHER (10 x 16)	1	NOT ILLUSTRATED
3	CC1.010.006.0.00	FUEL HOSE 50 mm	1	
4	50.519.02.000	HOSE CLIP n16	2	
5	P08.0709.002.0.PR	SPECIAL BANJO FOR FIP	1	
6	P08.0709.004.0.PR	LOCK NUT M10 x 1	1	NOT ILLUSTRATED

EXHAUST SYSTEM ASSEMBLY



Sr. No.	Part No.	Description	Qty.	Remark
1	P08.0718.003.0.PR	EXHAUST SILENCER	1	
2	CC1.151.09.0.00	EXHAUST GASKET	1	NOT ILLUSTRATED
3	50.006.08.000	NUT M8 x 1.25 GR 8.8	2	NOT ILLUSTRATED

INJECTOR LEAK OFF ASSEMBLY



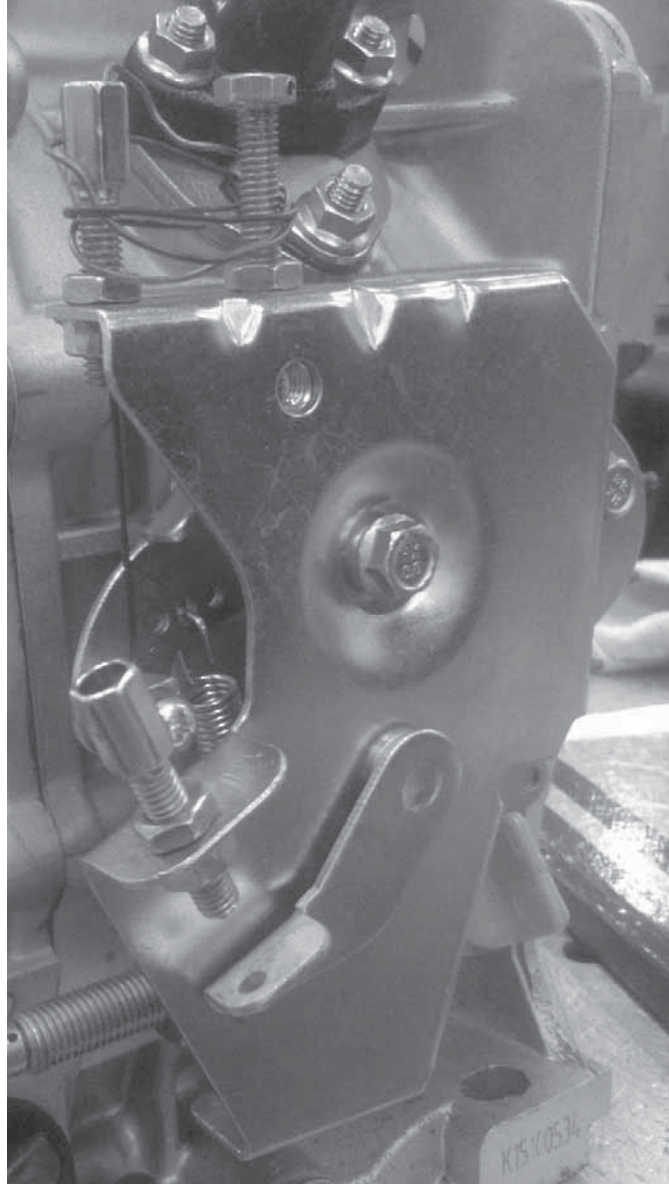
Sr. No.	Part No.	Description	Qty.	Remark
1	P08.0708.010.0.PR	LEAK OFF PIPE ASSEMBLY	1	NOT ILLUSTRATED
2	CC1.010.012.0.00	FUEL HOSE 200 mm FROM INJECTOR TO TANK	1	
3	CC1.010.015.0.00	HOSE CLIP n8	2	
4	P08.0708.001.0.PR	SPECIAL BANJO	1	
5	CC1.010.021.0.00	FUEL HOSE ID 7, OD 15, L 50 MM	1	
6	CC1.010.031.0.00	FUEL HOSE ID 6, OD 11, L 180 MM	1	

RECOIL STARTER ASSEMBLY



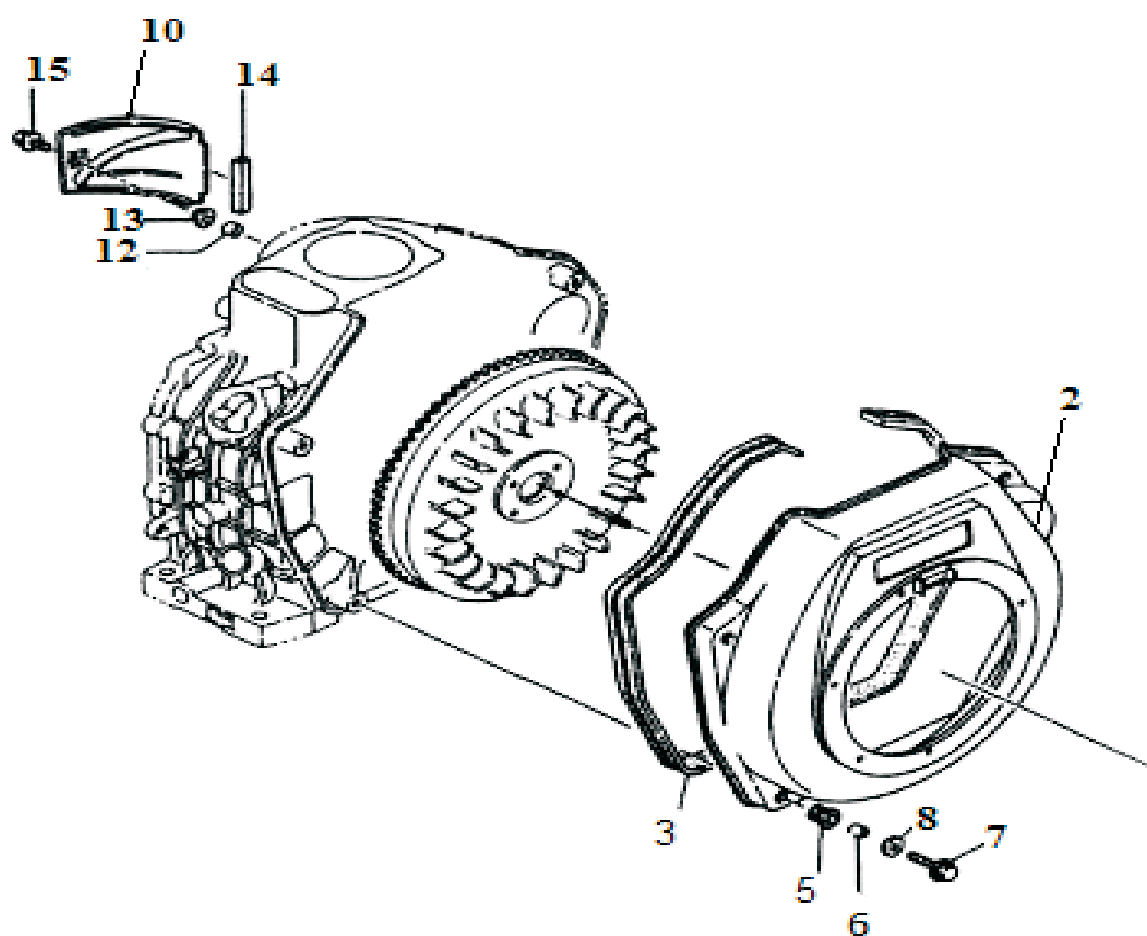
Sr. No.	Part No.	Description	Qty.	Remark
*1	CC1.196.10.0.00	RECOIL STARTER ASSEMBLY	1	

VARIABLE SPEED MECHANISM



Sr. No.	Part No.	Description	Qty.	Remark
*1	P08.0721.010.0.PR	VARIABLE SPEED MECHANISM	1	

WIND LEADING CASE ASSEMBLY (COWLING ASSEMBLY)



WIND LEADING CASE ASSEMBLY (COWLING ASSEMBLY)

Sr. No.	Part No.	Description	Qty.	Remark
*1	CC1.018.20.0.00	WIND LEADING CASE ASSEMBLY (COWLING ASSEMBLY)	1	CONSISTING OF SR. NO. 2 TO 4,7,8
2	CC1.018.002.0.00	WIND LEADING CASE	1	
3	CC1.018.001.0.00	SHOCK PADS	1	
*4	CC3.018.30.0.00	COLLAR OF WIND LEADING CASE WITH SHOCK ABSORBER	4	CONSISTING OF SR.NO.5,6
5	CC3.018.003.0.00	SHOCK ABSORBER	1	
6	CC3.018.004.0.00	COLLAR OF WIND LEADING CASE	1	
7	CC1.010.008.0.00	FLANGE BOLT M6x1x25 8.8	4	
8	CC1.005.003.0.00	PLAIN WASHER M6 (GB90-85) OD =18mm THK = 1.5 mm	4	
*9	CC1.018.10.0.00	WIND LEADING PLATE ASSEMBLY	1	CONSISTING OF SR. NO. 10,11,14,15
10	CC1.018.16.0.00	WIND LEADING PLATE	1	
*11	CC3.018.40.0.00	COLLAR OF WIND LEADING PLATE WITH PAD	1	CONSISTING OF SR. NO.12,13
12	CC3.018.17.0.00	COLLAR OF WIND LEADING PLATE	1	
13	CC3.018.18.0.00	PAD	1	
14	CC1.018.19.0.00	SHOCK ISOLATION PIECE OF WIND LEADING PLATE	1	
15	N11.051.07.0.00	FLANGED SCREW - M6 x 1.0 x 16 mm	1	



**Transmission &
Body Parts Catalogue**

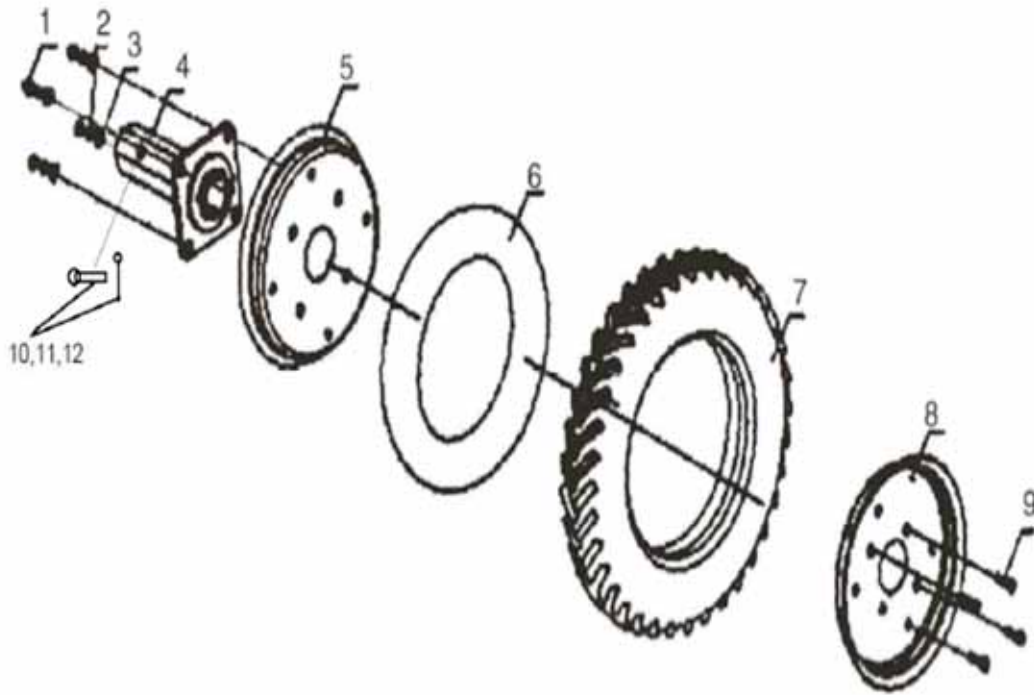
MIN T

Farm Mechanisation Business Unit

CONTENTS

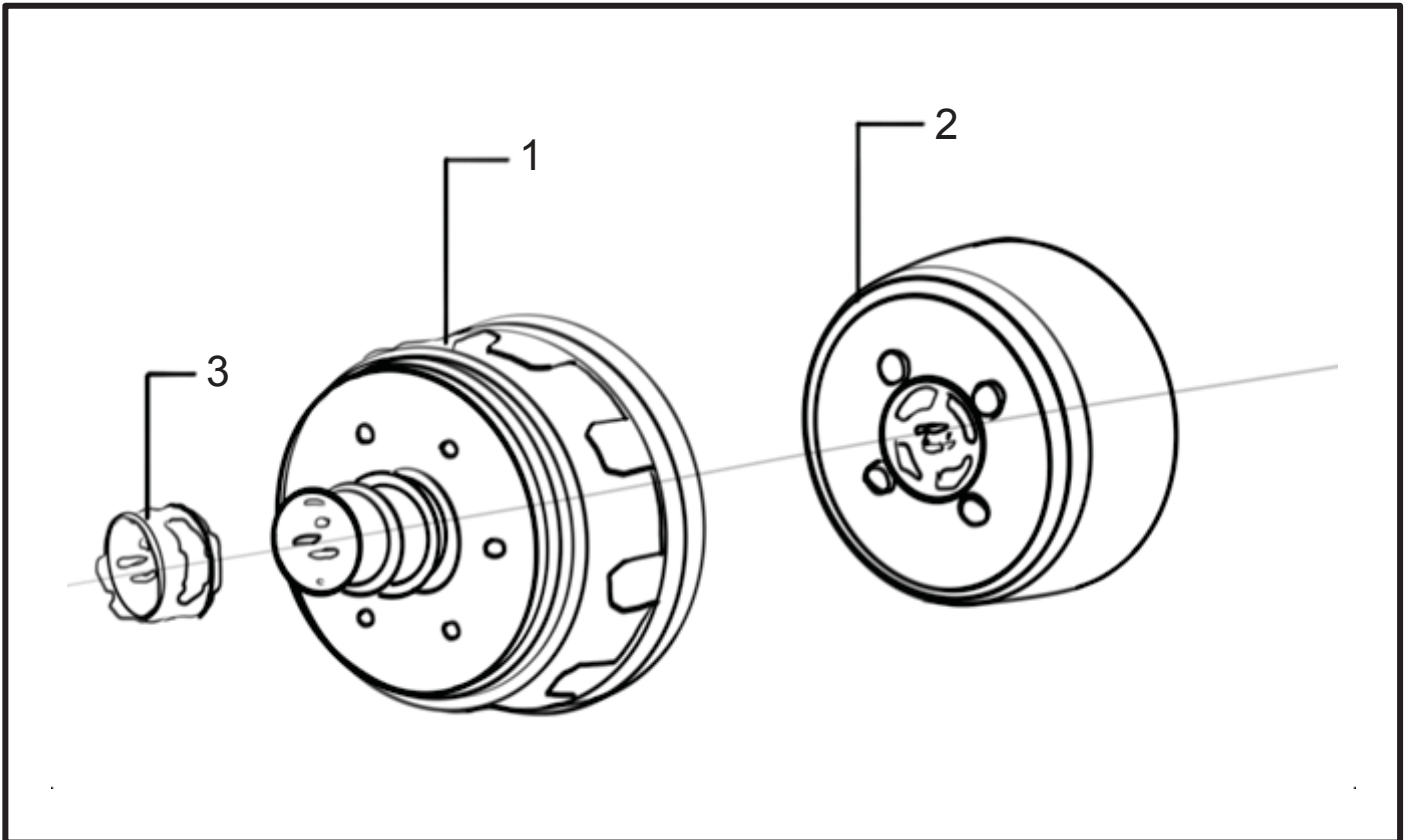
Sr. No.	Description	Page No.
1	WHEEL ASSEMBLY	71
2	CLUTCH ASSEMBLY	72
3	MAIN SHAFT ASSEMBLY	73
4	REVERSE SHAFT ASSEMBLY	74
5	GEAR BOX ASSEMBLY	75 - 77
6	DRY LAND BLADE ASSEMBLY	78
7	TRANSMISSION BOX ASSEMBLY	79
8	HANDLE ASSEMBLY AND CONTROLS	80 - 84
9	BUMPER ASSEMBLY - 8 HP	85
10	BUMPER ASSEMBLY - 5 HP	86

WHEEL ASSEMBLY



Sr. No.	Part No.	Description	Qty.	Remark
1	57.006.10.000	NUT - M10 X 1.5	16	
2	57.505.10.000	SPRING WASHER - M10	16	
3	57.507.10.0.00	PLAIN PUNCHED WASHER - M10	16	
4	P08.0002.021.0.00	AXLE ASSEMBLY	2	
5	P08.0002.051.0.00	RIGHT RIM DIA 400	2	
6	P15.1801.023.0.PR	4.00-8 TUBE	2	
7	P08.0002.153.0.00	TYRE 4.00 x 8 FOR POWER WEEDER	2	
8	P08.0002.054.0.00	LEFT RIM DIA 400	2	
9	57.003.10.030	SET SCREW - M10 x 1.5 x 30	16	
10	P08.0002.101.0.00	CLEVIS PIN DIA 7.5 x 50	6	
11	P08.0002.102.0.00	PLAIN PUNCHED WASHER - M8	6	
12	P08.0002.103.0.00	R PIN	6	

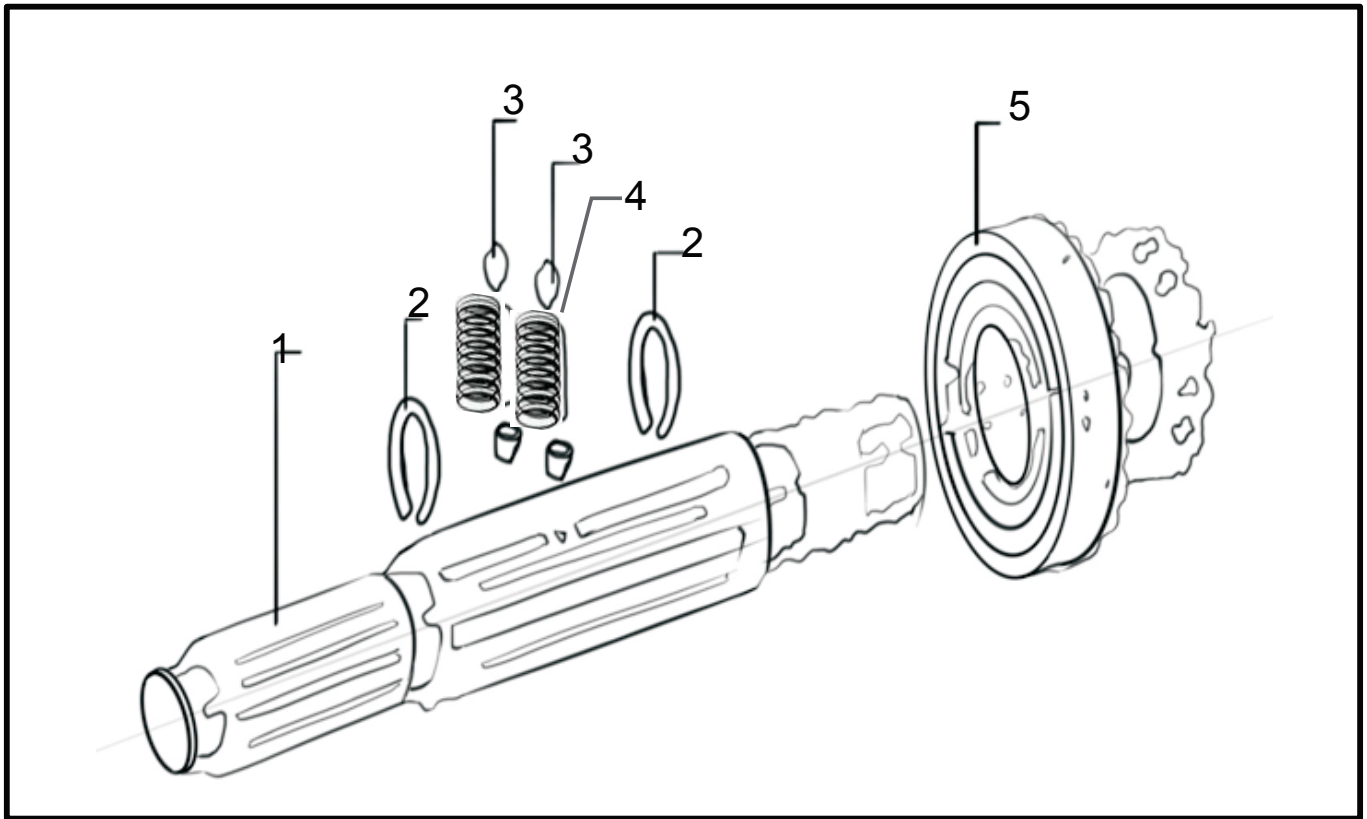
CLUTCH ASSEMBLY



Sr. No.	Part No.	Description	Qty.	Remark
1	P08.0003.051.0.00	CLUTCH COVER ASSEMBLY	1	
2	P08.0003.054.0.00	CLUTCH SPOOL ASSEMBLY	1	
3	P08.0003.057.0.00	DEEP GROOVE BALL BEARING 6207	1	
#	P08.0003.055.0.00	GLAND DISC	1	
#	P08.0003.056.0.00	FRICTION DISCS	5	
#	P08.0003.058.0.00	SPRING	4	
#	P08.0003.102.0.00	HEX SOCKET BOLT M5 x 20	4	
#	P08.0003.002.0.00	FIXING HUB	1	
#	P08.0003.103.0.00	STEEL BALL DIA 3.5	29	
#	P08.0003.003.0.00	MOVABLE SLEEVE	1	
#	P08.0003.059.0.00	LIFT PLATE ASSEMBLY	1	
#	P08.0003.061.0.00	DRIVEN DISCS	4	

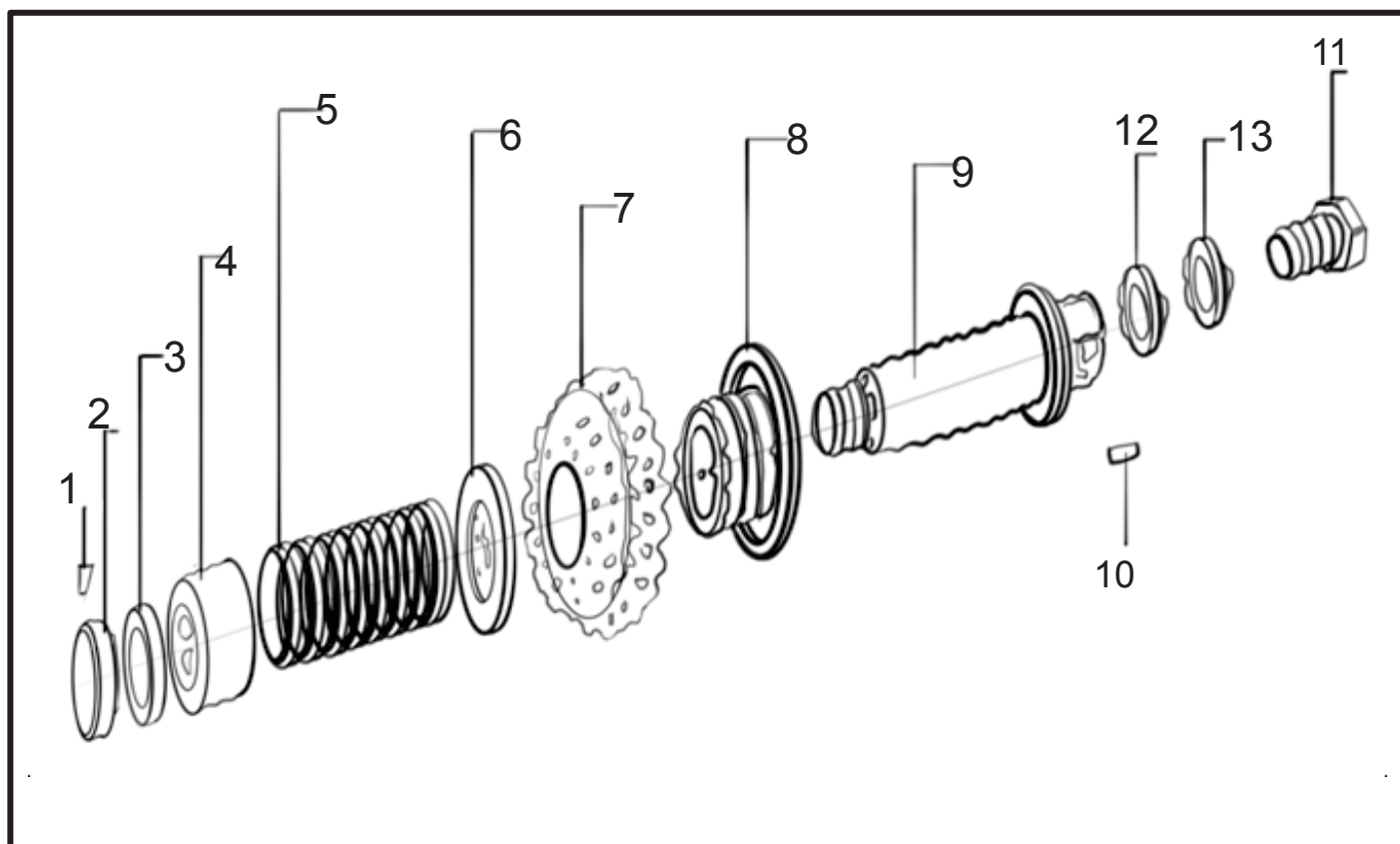
Not illustrated in the figure

MAIN SHAFT ASSEMBLY



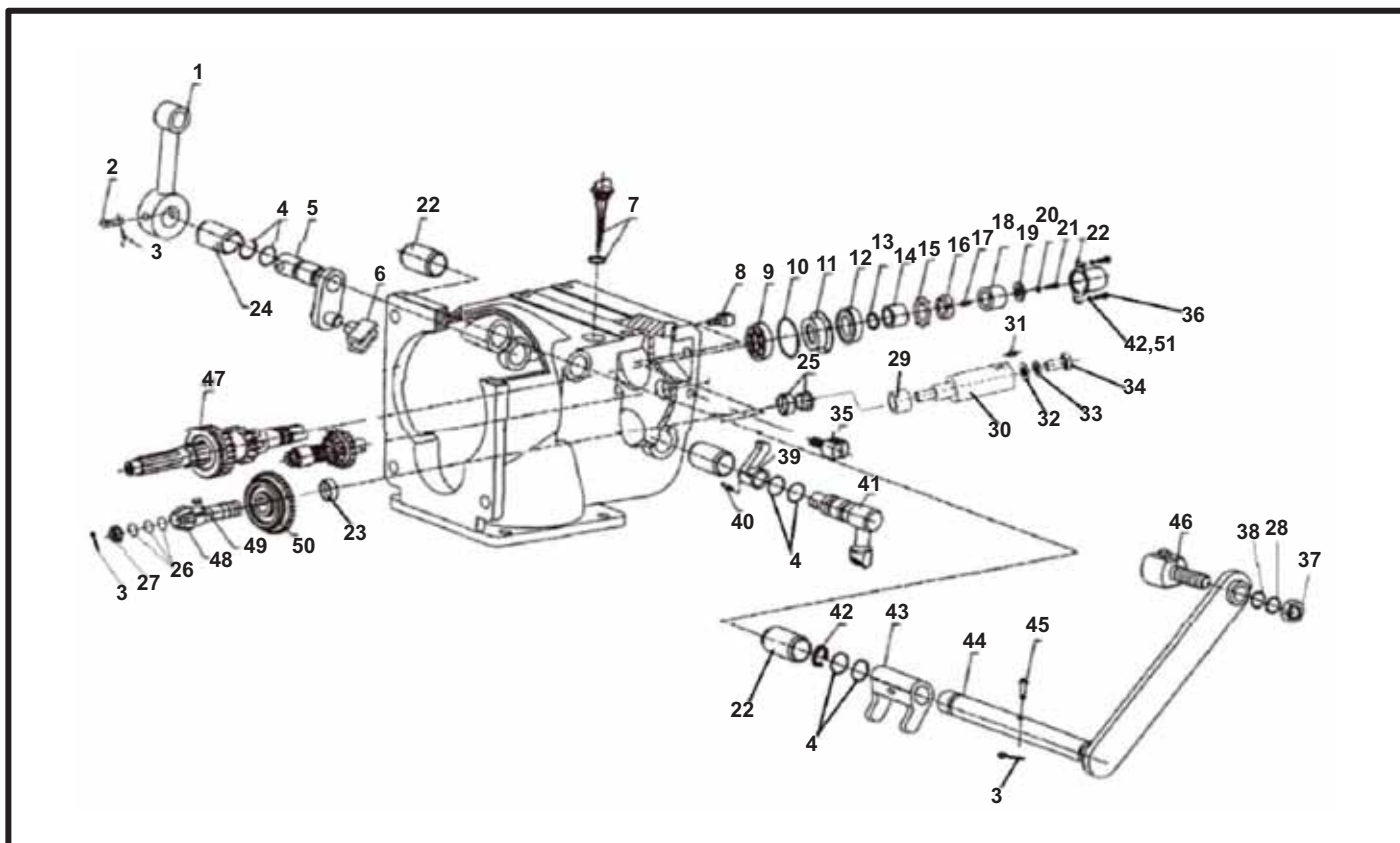
Sr. No.	Part No.	Description	Qty.	Remark
1	P08.0004.001.0.00	MAIN SHAFT	1	
2	P08.0004.002.0.00	STEEL RING WASHER	2	
3	P08.0004.101.0.00	STEEL BALL DIA 6	4	
4	P08.0004.051.0.00	GUIDE SPRING DIA 6 x 0.8 x 23	2	
5	P08.0004.003.0.00	TRANSMISSION GEAR (25 TEETH)	1	

REVERSE SHAFT ASSEMBLY



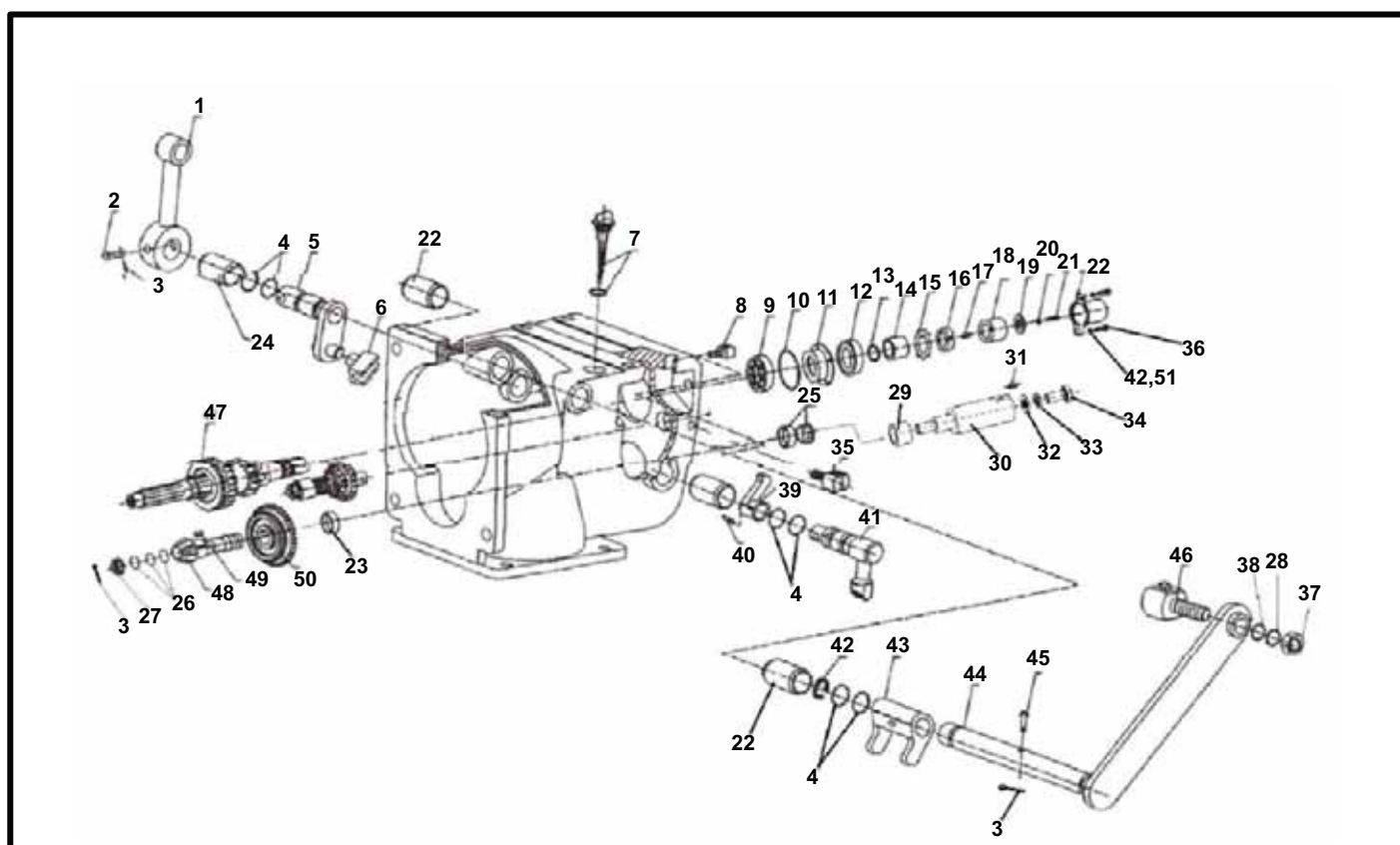
Sr. No.	Part No.	Description	Qty.	Remark
1	P08.0005.101.0.00	SPLIT PIN DIA 32 x 26	1	
2	P08.0005.102.0.00	HEXAGON SLOTTED NUT M12	1	
3	P08.0005.103.0.00	WASHER DIA 12	1	
4	P08.0005.001.0.00	RETAINING SLEEVE	1	
5	P08.0005.051.0.00	REVERSE GEAR SPRING DIA 20 x 1.65 x 55	1	
6	P08.0005.002.0.00	REVERSE GEAR SPRING SUPPORT	1	
7	P08.0005.003.0.00	REVERSE GEAR	1	
8	P08.0005.004.0.00	REVERSE GEAR PUSH PLATE	1	
9	P08.0005.005.0.00	REVERSE GEAR SHAFT	1	
10	P08.0005.104.0.00	PIN DIA 5 x 10	1	
11	P08.0005.105.0.00	SET SCREW M10 x 25	1	
12	P08.0005.106.0.00	SPRING WASHER M10	1	
13	P08.0005.107.0.00	PLAIN WASHER (22x 10.2 x 3.85)	1	

GEAR BOX ASSEMBLY



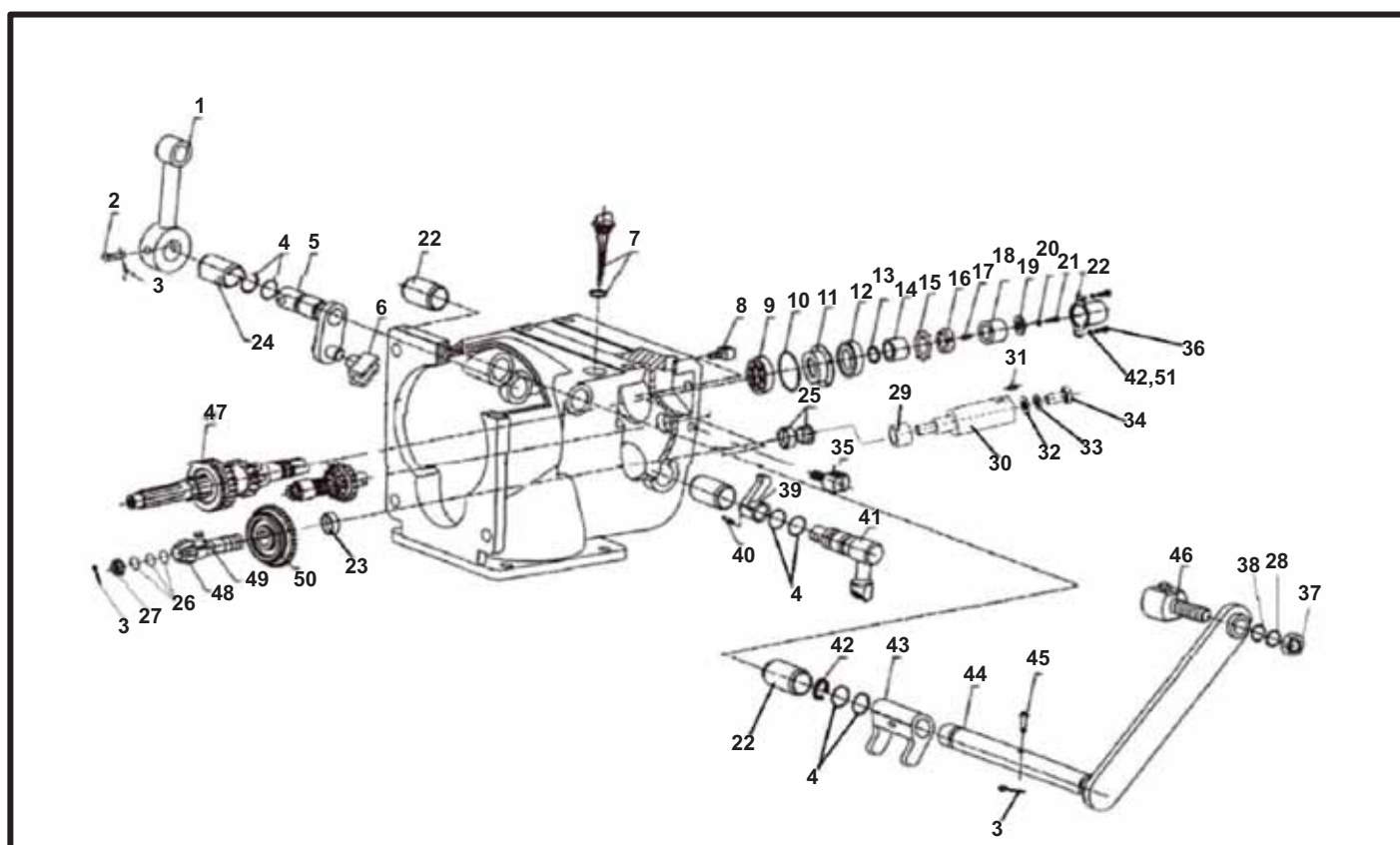
Sr. No.	Part No.	Description	Qty.	Remark
1	P08.0007.021.0.00	GEAR SHIFTING SLEEVE ASSEMBLY	1	
2	P08.0007.101.0.00	SHIFTING GEAR PIN DIA 6 x 40	1	
3	P08.0007.102.0.00	SPLIT PIN DIA 1.6 x DIA 20	2	
4	P08.0007.051.0.00	O TYPE SEAL RING DIA 11.2 x 2.65	6	
5	P08.0007.002.0.00	SHIFTING FORK SHAFT ASSEMBLY	1	
6	P08.0007.003.0.00	SHIFTING BLOCK	1	
7	P08.0007.052.0.00	OIL LEVEL INDICATOR (WITH O TYPE SEAL RING)	1	
8	P08.0007.004.0.00	CLUTCH CABLE HOLDER	1	
9	P08.0007.053.0.00	DEEP GROOVE BALL BEARING 6204	1	
10	P08.0007.054.0.00	O TYPE SEAL RING DIA 45 x 1.8	1	
11	P08.0007.005.0.00	GLAND COVER	1	
12	P08.0007.055.0.00	LIP TYPE OIL SEAL B25 x 40 x 7	1	
13	P08.0007.056.0.00	O TYPE SEAL RING DIA 17 x 1.8	1	
14	P08.0007.006.0.00	MAIN SHAFT SLEEVE	2	
15	P08.0007.103.0.00	CHECK WASHER 20	2	
16	P08.0007.104.0.00	ROUND NUT M20 x 1.5	1	

GEAR BOX ASSEMBLY



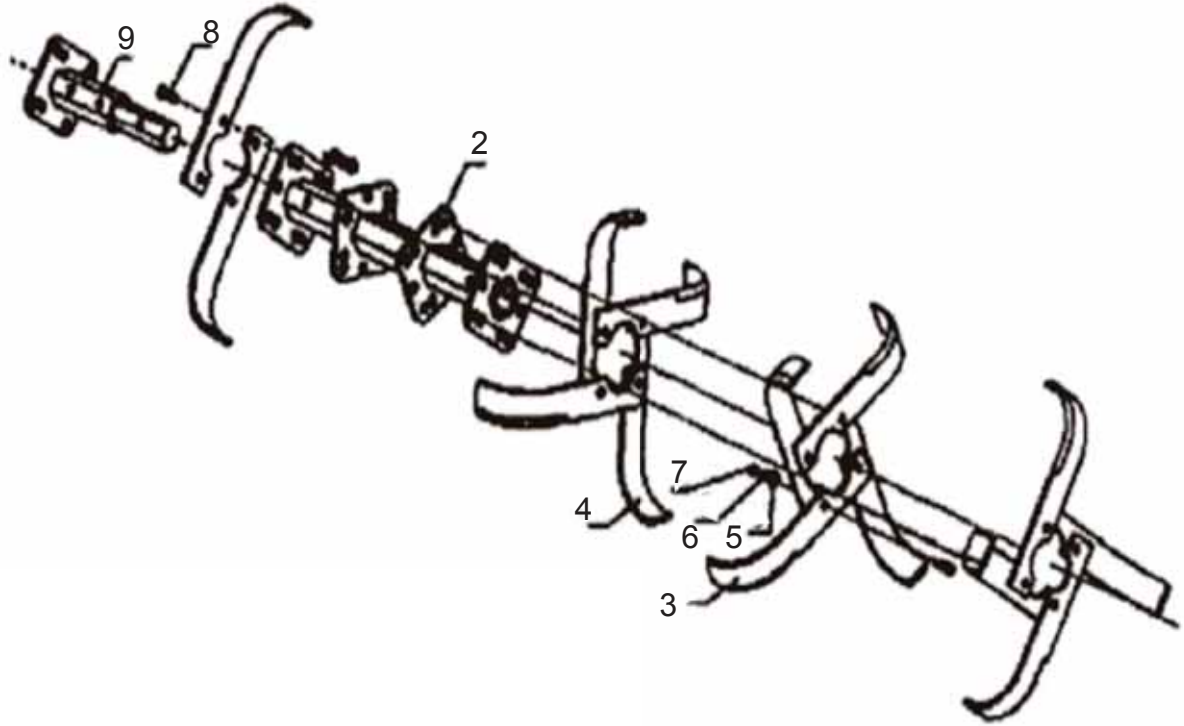
Sr. No.	Part No.	Description	Qty.	Remark
17	P08.0007.105.0.00	FLAT KEY A6 x 6 x 20	1	
18	P08.0007.106.0.00	KEY SLEEVE	1	
19	P08.0007.107.0.00	KEY SLEEVE WASHER DIA 30 x 8 x 4	1	
20	P08.0007.108.0.00	SPRING WASHER DIA 8	1	
21	P08.0007.109.0.00	HEX BOLT M8 x 20	1	
22	P08.0007.022.0.00	SPINDLE PROTECTION COVER	3	
23	P08.0007.057.0.00	BUSH OF REVERSE SHAFT AND CLUTCH FORK	1	
24	P08.0007.058.0.00	SHIFT SHAFT BUSHING	1	
25	P08.0007.059.0.00	ROLLER BEARING 3024	2	
26	P08.0007.111.0.00	PLAIN WASHER (20 x 10 x 0.86)	3	
27	P08.0007.112.0.00	CASTLE NUT M10	1	
28	P08.0007.113.0.00	SPRING WASHER DIA 8	1	
29	P08.0007.061.0.00	THRUST BEARING	1	
30	P08.0007.115.0.00	SHAFT	1	
31	P08.0007.023.0.00	SHAFT LOCKING PIN	1	
32	P08.0007.116.0.00	PLAIN WASHER	1	
33	P08.0007.117.0.00	SPRING WASHER DIA 12	1	
34	P08.0007.118.0.00	HEX BOLT M12 x 25	1	

GEAR BOX ASSEMBLY



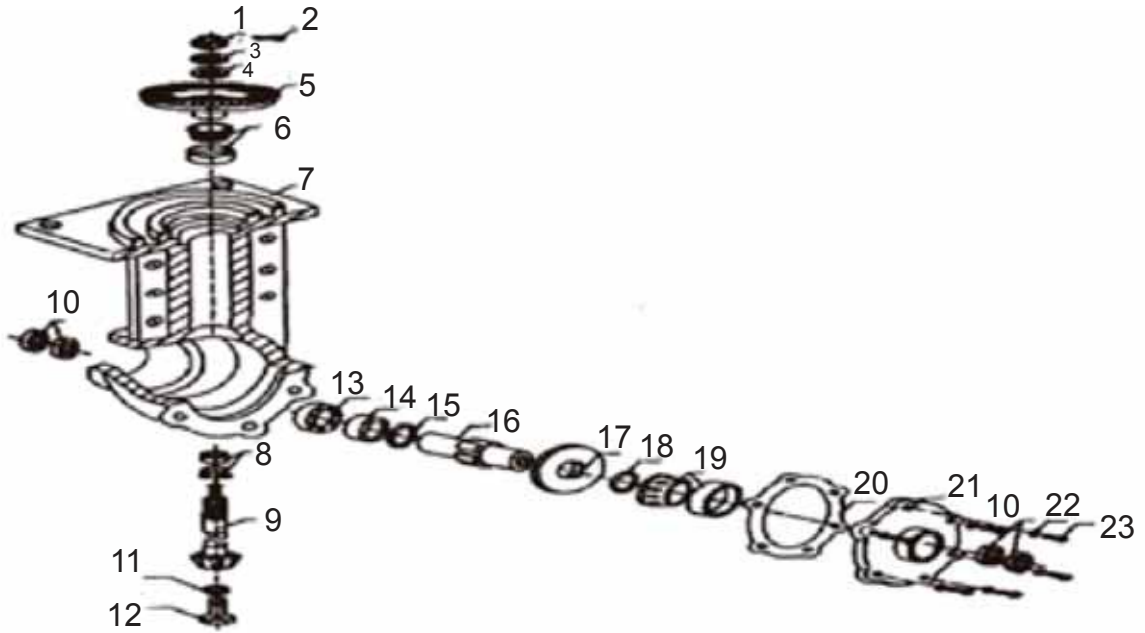
Sr. No.	Part No.	Description	Qty.	Remark
35	P08.0007.007.0.00	REVERSE GEAR CABLE HOLDER	1	
36	P08.0007.119.0.00	SET SCREW M6 x 20	4	
37	57.006.08.000	NUT - M8	3	
38	P08.0007.122.0.00	PLAIN WASHER DIA 8	1	
39	P08.0007.008.0.00	REVERSE GEAR FORK	1	
40	P08.0007.009.0.00	SCREW COLUMN PIN	1	
41	P08.0007.011.0.00	REVERSE GEAR FORK SHAFT ASSEMBLY	1	
42	P08.0007.123.0.00	PLAIN WASHER M6	4	
43	P08.0007.012.0.00	CLUTCH SHIFTING FORK	1	
44	P08.0007.013.0.00	CLUTCH SHIFTING FORK SHAFT ASSEMBLY	1	
45	P08.0007.014.0.00	SHIFTING FORK PIN	1	
46	P08.0007.015.0.00	CLUTCH CABLE ACTION HOLDER	1	
47	P08.0007.016.0.00	MAIN SHAFT ASSEMBLY	1	
48	P08.0007.017.0.00	INTERNAL THREAD SHAFT OF DRIVING BEVEL GEAR (LAY SHAFT)	1	
49	P08.0007.124.0.00	FLAT KEY A8 x 7 x 2	1	
50	P08.0007.018.0.00	DOUBLE SPUR GEAR	1	
51	P08.0007.125.0.00	SPRING WASHER M6	4	

BLADE ASSEMBLY



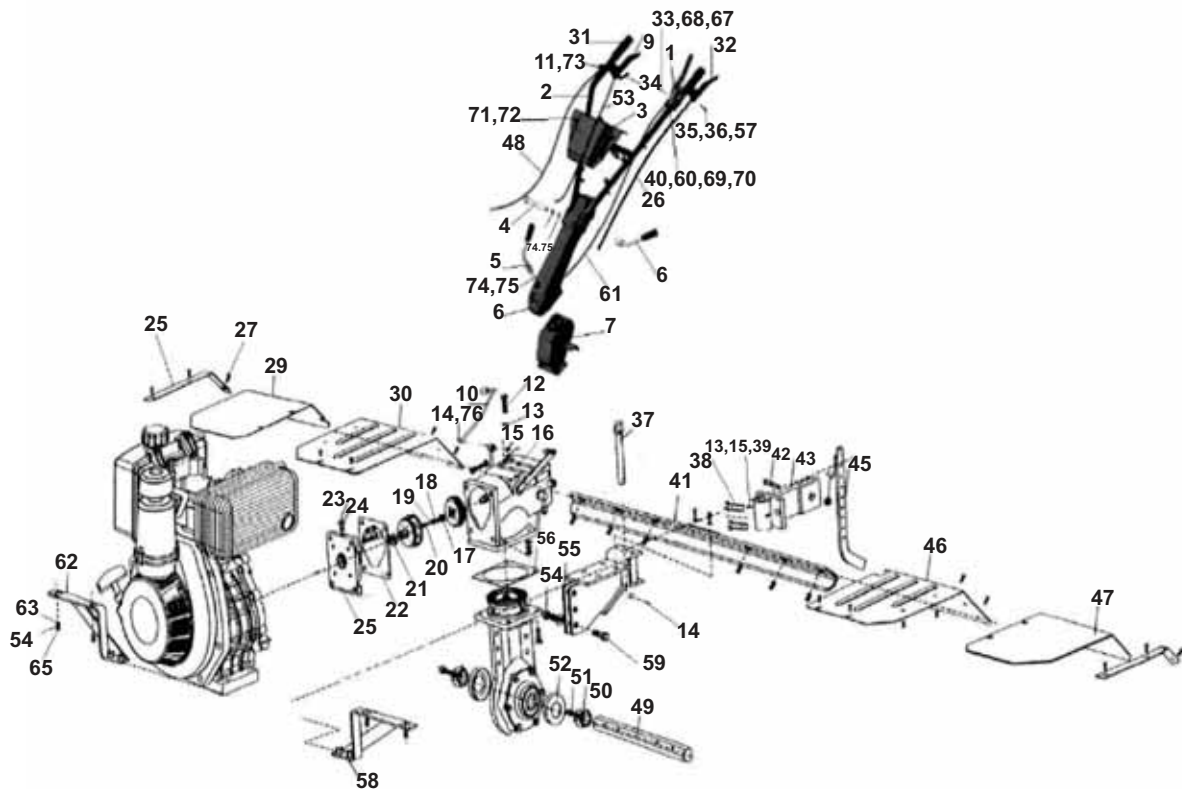
Sr. No.	Part No.	Description	QTY.(5 HP)	QTY (8 HP)
1	P08.0008.051.0.00	DRY LAND BLADE ASSEMBLY 1050mm	2	-
	P08.0008.052.0.00	DRY LAND BLADE ASSEMBLY 1350mm	-	2
2	P08.0008.021.0.00	MAIN BLADE SHAFT	2	2
3	P08.0008.053.0.00	DRY LAND BLADES (LEFT)	12	16
4	P08.0008.054.0.00	DRY LAND BLADES (RIGHT)	12	16
5	57.507.10.000	PLAIN PUNCHED WASHER - M10	24	32
6	57.505.10.000	SPRING WASHER - M10	24	32
7	57.006.10.000	NUT - M10 x 1.5	24	32
8	57.003.10.030	SET SCREW - M10 x 1.5 x 30	24	32
9	P08.0008.022.0.00	AUXILIARY BLADES SLEEVE	2	2

TRANSMISSION BOX ASSEMBLY



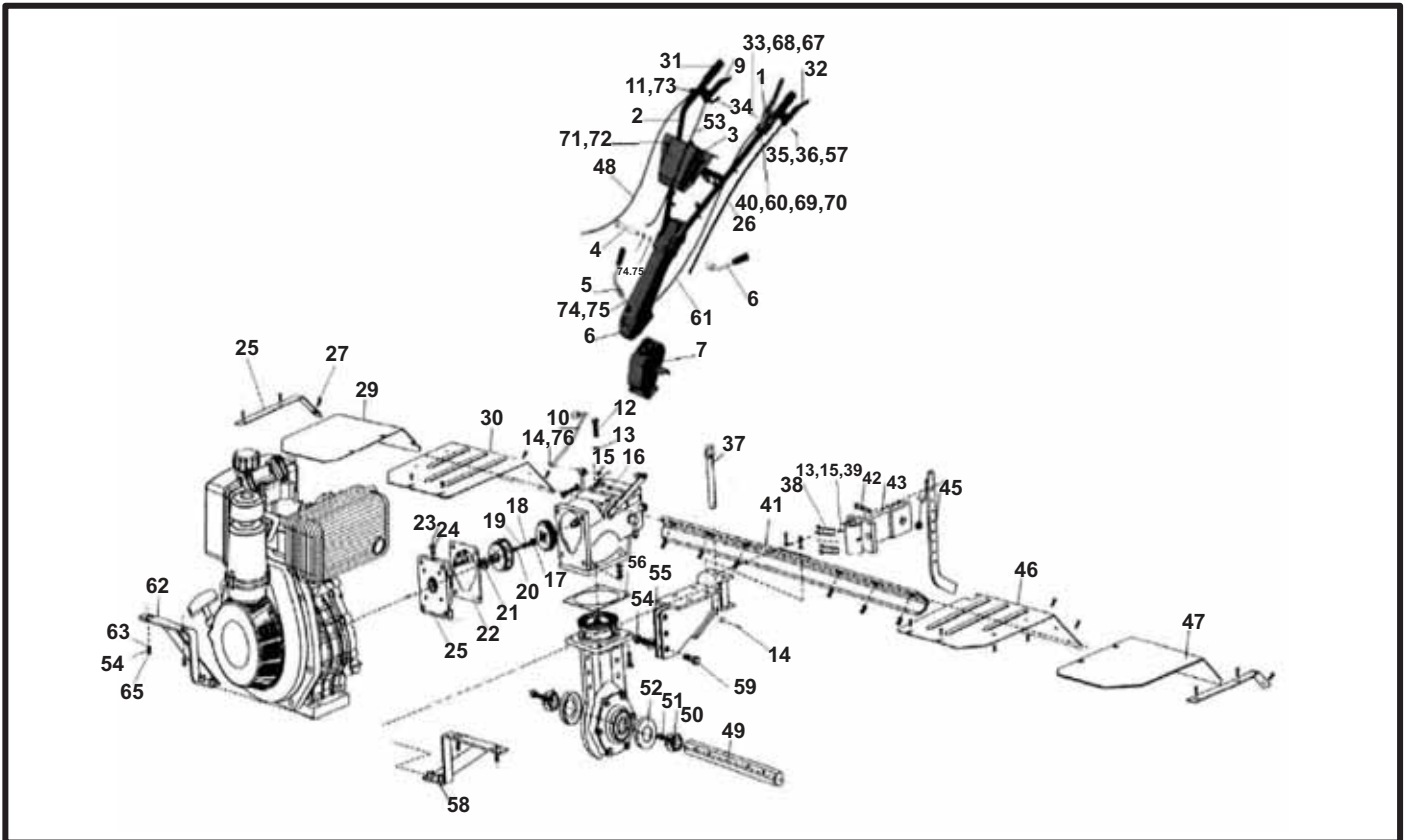
Sr. No.	Part No.	Description	Qty.	Remark
1	P08.0009.101.0.00	HEX SLOTTED NUT M12	1	
2	P08.0009.102.0.00	SPLIT PIN DIA 2.5 x 22	1	
3	57.505.12.000	SPRING WASHER - M12	1	
4	57.507.12.000	PLAIN PUNCHED WASHER - M12	1	
5	P08.0009.003.0.00	DRIVEN BEVEL GEAR	1	
6	P08.0009.051.0.00	TAPERED ROLLER BEARING 30206	1	
7	P08.0009.001.0.00	TRANSMISSION BOX	1	
8	P08.0009.052.0.00	TAPERED ROLLER BEARING 30204	1	
9	P08.0009.004.0.00	BEVEL GEAR SHAFT	1	
10	P08.0009.053.0.00	LIP TYPE OIL SEAL B45 x 62 x 8	2	
11	P08.0009.054.0.00	O TYPE SEAL RING	1	
12	P08.0009.105.0.00	OIL DRAIN BOLT M12 x 12.5	1	
13	P08.0009.055.0.00	DEEP GROOVE BALL BEARING 6009	1	
14	P08.0009.005.0.00	INPUT SHAFT BUSH	1	
15	P08.0009.106.0.00	ADJUST WASHER DIA 60 x DIA 45.5 x 0.1	AR	
16	P08.0009.006.0.00	INTERNAL HEX OUTPUT SHAFT SLEEVE	1	
17	P08.0009.007.0.00	WALKING BEVEL GEAR	1	
18	P08.0009.107.0.00	ADJUST WASHER DIA 60 x DIA 45.5 x 0.5	AR	
19	P08.0009.056.0.00	TAPERED ROLLER BEARING	1	
20	P08.0009.008.0.00	TRANSMISSION BOX STEEL GASKET 0.2 mm	AR	
	P08.0009.009.0.00	TRANSMISSION BOX STEEL GASKET 0.5 mm	AR	
21	P08.0009.002.0.00	TRANSMISSION BOX COVER	1	
22	57.505.08.000	SPRING WASHER - M10	6	
23	P08.0009.109.0.00	HEX BOLT M10 x 35	6	

HANDLE ASSEMBLY AND CONTROLS



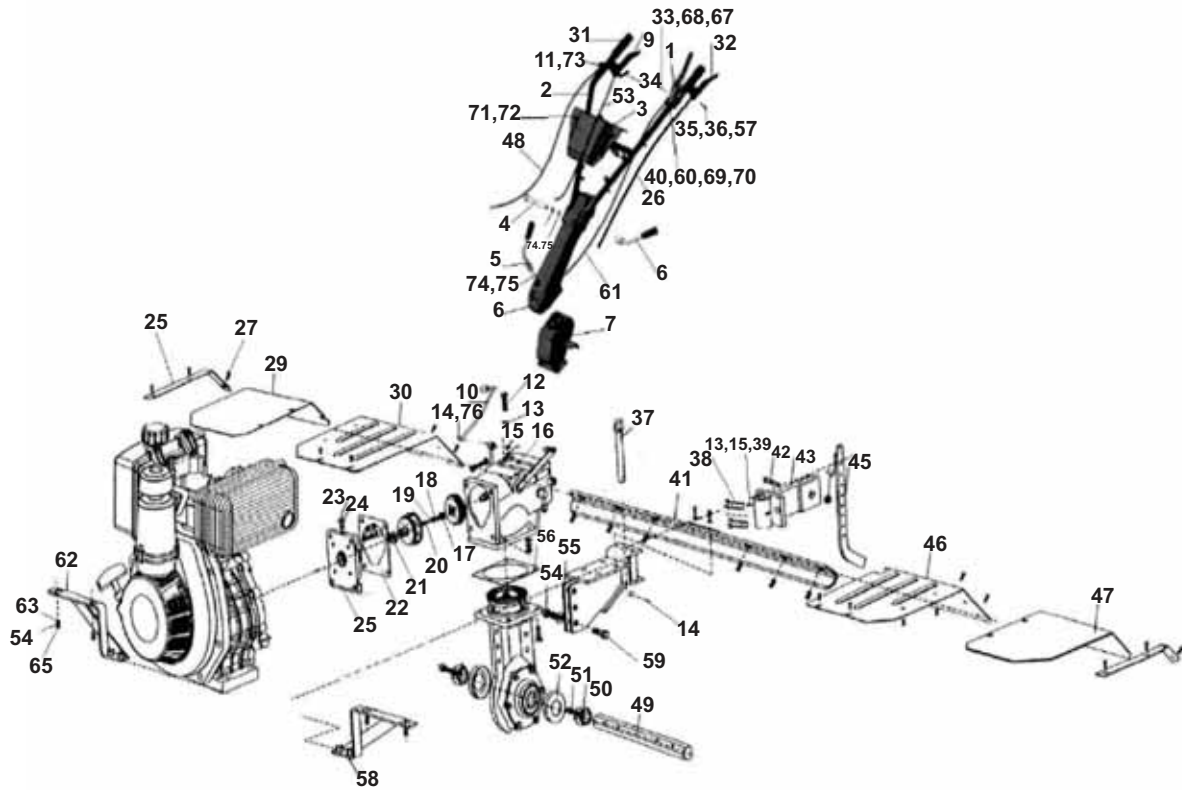
Sr. No.	Part No.	Description	Qty.	Remark
1	P08.0010.051.0.00	EMERGENCY STOP LEVER	1	
2	P08.0010.021.0.00	HANDLE ASSEMBLY	1	
3	P08.0010.052.0.00	TOOL BOX	1	
4	P08.0010.101.0.00	LOCKING BOLT M16 x 160	1	
5	P08.0010.022.0.00	LEVER LOCKING BRACKET PIVOT . HANDLE MTG	1	
6	P08.0010.023.0.00	BRACKET PIVOT HANDLE MTG.	1	
7	P08.0010.024.0.00	BRACKET MTG. MAIN	1	
8	P08.0010.025.0.00	LEVER LOCKING HANDLE ASSEMBLY	1	
9	P08.0010.026.0.00	REVERSE LEVER	1	
10	P08.0010.001.0.00	LEVER GEARS SHIFTING	1	
11	P08.0010.053.0.00	ACCELERATOR ASSEMBLY	1	
12	P08.0010.102.0.00	HEX BOLT M10 x 40	12	
13	P08.0010.103.0.00	PLAIN WASHER DIA 10	16	
14	P08.0010.104.0.00	R PIN	2	
15	P08.0010.105.0.00	HEX NUT M10	12	

HANDLE ASSEMBLY AND CONTROLS



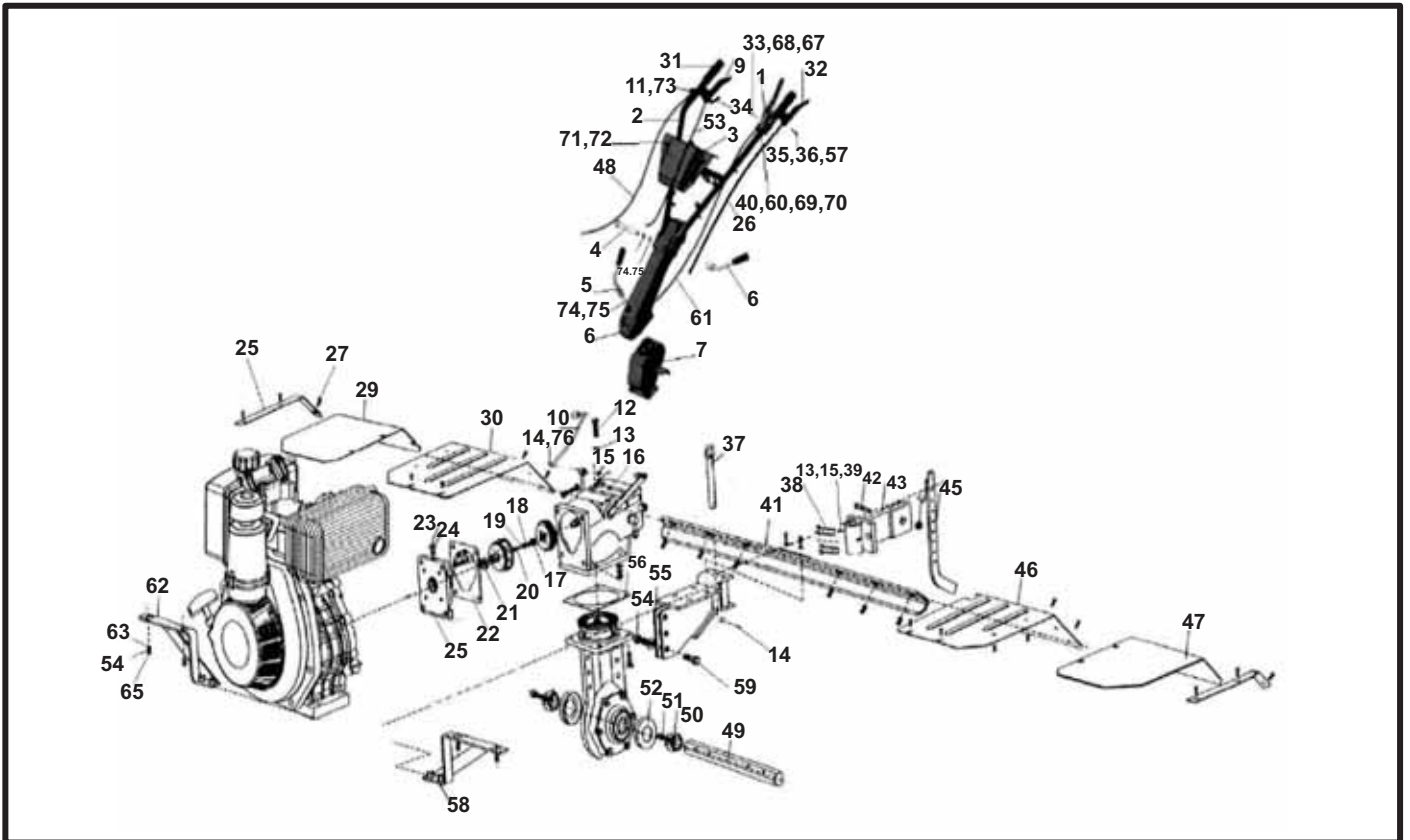
Sr. No.	Part No.	Description	Qty.	Remark
16	P08.0010.002.0.00	GEAR BOX HOUSING	1	
17	P08.0010.056.0.00	DEEP GROOVE BALL BEARING 6202	1	
18	P08.0010.106.0.00	CLUTCH WASHER	1	
19	P08.0010.107.0.00	SERRATED TIGHTENING WASHER	1	
20	P08.0010.108.0.00	HEX BOLT M8 x 20	1	
21	P08.0010.057.0.00	DEEP GROOVE BALL BEARING 6207	1	
22	P08.0010.058.0.00	GASKET ADAPTOR PLATE	1	
23	P08.0010.109.0.00	DECOMPRESSION BOLT M12 x 30	1	
24	P08.0010.110.0.00	SPLIT PIN DIA 2 x DIA 20	1	
25	P08.0010.003.0.00	ADAPTOR PLATE	1	
26	P08.0010.059.0.00	CLUTCH CABLE	1	
27	P08.0010.114.0.00	HEX BOLT M6 x 12	16	
28	P08.0010.028.0.00	RETAINING PLATE FENDER	2	
29	P08.0010.029.0.00	FENDER PLATE EXTENSION RH	1	
30	P08.0010.031.0.00	FENDER PLATE RH	1	

HANDLE ASSEMBLY AND CONTROLS



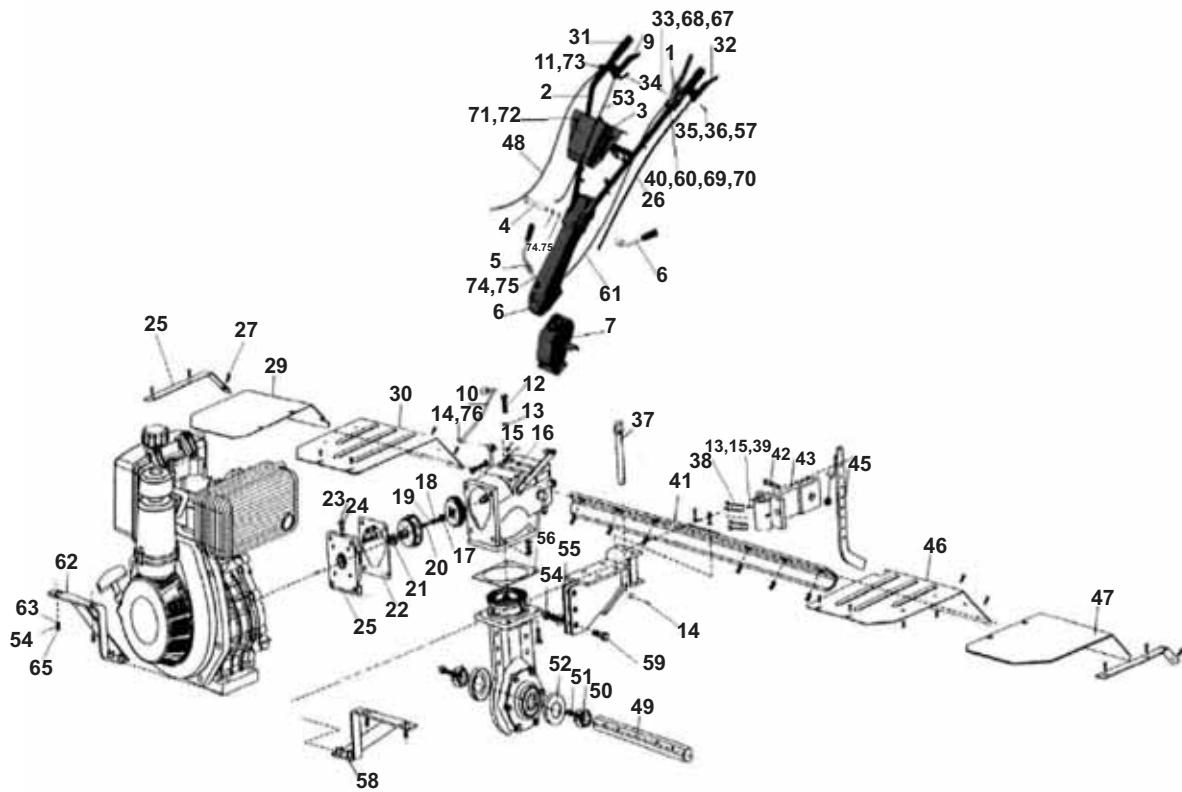
Sr. No.	Part No.	Description	Qty.	Remark
31	P08.0010.064.0.00	SLEEVE HANDLE	2	
32	P08.0010.067.0.00	CLUTCH LEVER	1	
33	P08.0010.065.0.00	SCREW M5 x 40	2	
34	P08.0010.066.0.00	REVERSE GEAR LOCK	1	
35	P08.0010.127.0.00	CABLE CONNECTOR	2	
36	P08.0010.128.0.00	SPLIT PIN DIA 2 x 20	4	
37	P08.0010.004.0.00	TOW-BAR LOCK PIN	1	
38	P08.0010.115.0.00	HEX BOLT M10 x 50	4	
39	P08.0010.116.0.00	SPRING WASHER DIA 10	4	
40	P08.0010.032.0.00	EMERGENCY STOP LEVER MTG. BRACKET	1	
41	P08.0010.033.0.00	SUPPORTING FRAME OF PROTECTIVE PLATE	1	
42	P08.0010.117.0.00	CLEVIS PIN DIA 10 X 40	5	
43	P08.0010.034.0.00	CONNECTOR ASSEMBLY	1	
44	P08.0010.118.0.00	PIN R TYPE	1	
45	P08.0010.035.0.00	RESISTANCE BAR	1	

HANDLE ASSEMBLY AND CONTROLS



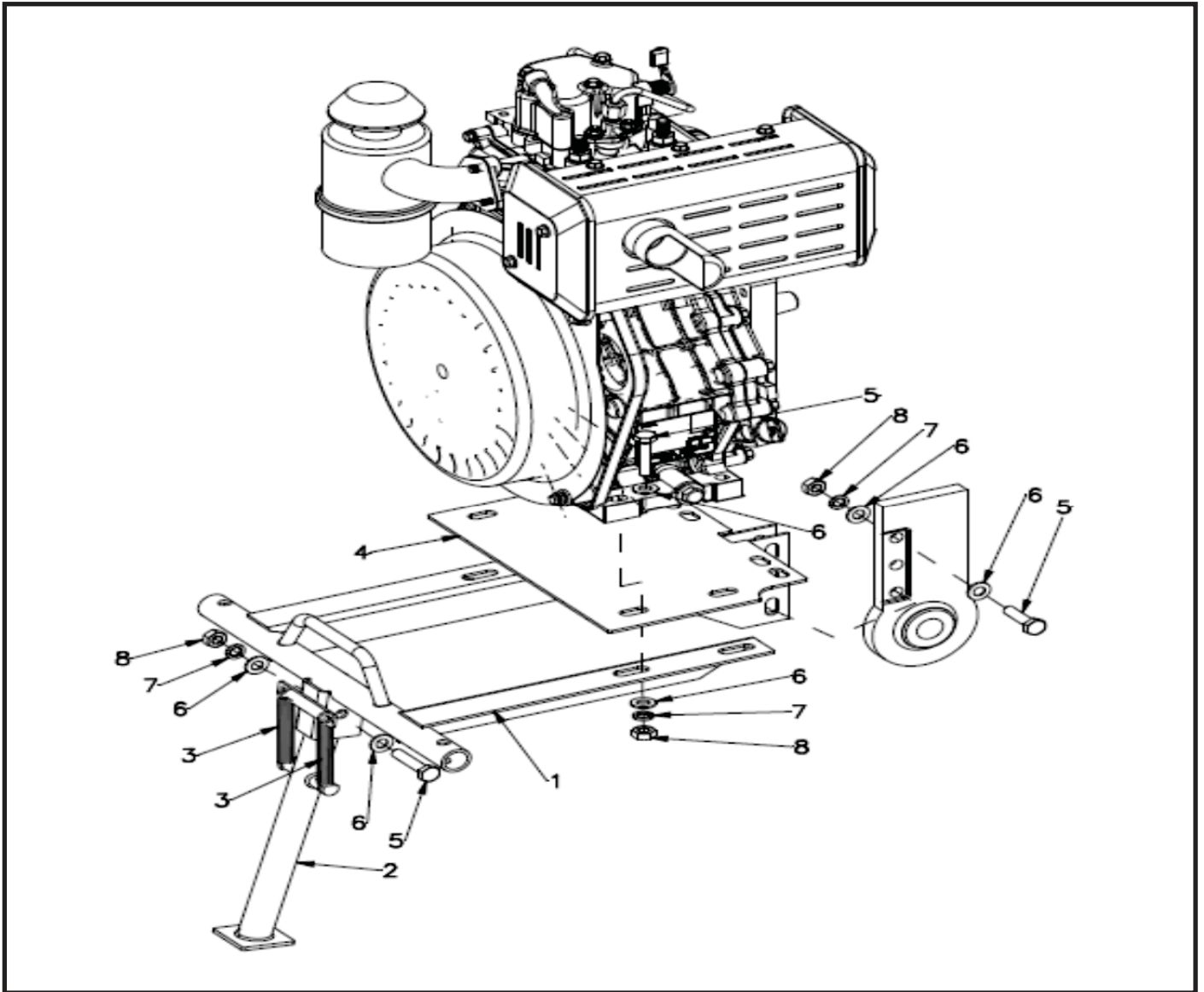
Sr. No.	Part No.	Description	Qty.	Remark
46	P08.0010.036.0.00	FENDER PLATE LH	1	
47	P08.0010.037.0.00	FENDER PLATE EXTENSION LH	1	
48	P08.0010.061.0.00	CABLE THROTTLE	1	
49	P08.0010.038.0.00	HEXAGONAL OUTPUT SHAFT	1	
50	P08.0010.039.0.00	HEXAGONAL FIX SLEEVE	2	
51	P08.0010.119.0.00	HEX BOLT M8 x 25	2	
52	P08.0010.041.0.00	DUST PROOF COVER	2	
53	P08.0010.062.0.00	CABLE REVERSE	1	
54	P08.0010.121.0.00	SIX ANGLE THIN TEETH NUT M10 x 1	6	
55	P08.0010.042.0.00	WELDING TRAILER BODY ASSEMBLY	1	
56	P08.0010.005.0.00	GEAR BOX SEALING WASHER 0.2 mm	AR	
	P08.0010.006.0.00	GEAR BOX SEALING WASHER 0.5 mm	AR	
57	P08.0010.129.0.00	PIN DIA 6.8	2	
58	P08.0010.043.0.00	LEFT BRACKET	1	
59	P08.0010.122.0.00	SIX ANGLE THIN TEETH SCREW M10 x 1 x 45	6	
60	P08.0010.044.0.00	EMERGENCY STOP LOCKING BRACKET	2	

HANDLE ASSEMBLY AND CONTROLS



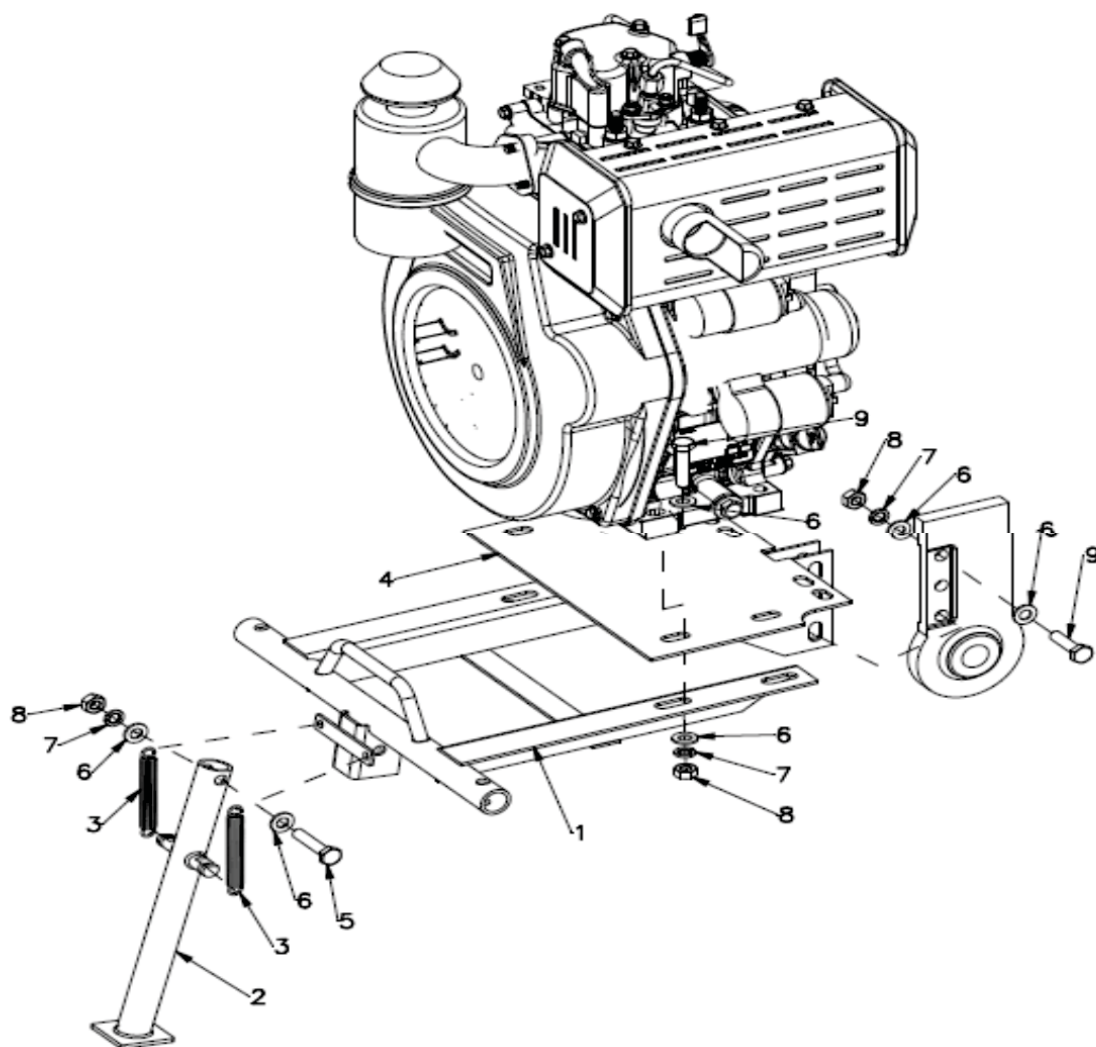
Sr. No.	Part No.	Description	Qty.	Remark
61	P08.0010.068.0.00	CABLE - EMERGENCY STOP	1	
62	P08.0010.046.0.00	RIGHT BRACKET	1	
63	P08.0010.123.0.00	PLAIN WASHER DIA 6	16	
64	P08.0010.124.0.00	SPRING WASHER DIA 6	16	
65	P08.0010.125.0.00	HEX NUT M6	16	
66	P08.0010.138.0.00	CABLE TIE	2	
67	P08.0010.126.0.00	NUT M5	2	
68	57.507.05.000.	PLAIN WASHER M5	1	
69	P08.0010.063.0.00	STOP LOCKING SPRING	1	
70	P08.0010.131.0.00	SCREW M6 x 45	2	
71	P08.0010.132.0.00	FLANGE HEADED SCREW M6 x 20	4	
72	P08.0010.133.0.00	FLANGE HEADED NUT M6	4	
73	P08.0010.134.0.00	SCREW M5 x 25	1	
74	P08.0010.135.0.00	PLAIN WASHER M16	2	
75	P08.0010.136.0.00	SPRING WASHER M16	2	
76	P08.0010.137.0.00	PLAIN WASHER M 12	1	

FOR 8 HP BUMPER ASSEMBLY



Sr. No.	Part No.	Description	Qty.	Remark
1	P08.0006.021.0.00	BUMPER ASSEMBLY	1	
2	P08.0006.022.0.00	FRONT STAND	1	
3	P08.0006.051.0.00	FRONT STAND SPRING	2	
4	P08.0006.044.0.00	ENGINE SUPPORT PLATE	1	
5	57.003.010.045	SET SCREW - M10 x 1.5 x 45	8	
6	57.507.10.000	PLAIN PUNCHED WASHER - M10	16	
7	57.505.10.000	SPRING WASHER - M10	8	
8	57.006.10.000	NUT - M10 x1.5	8	

FOR 5 HP BUMPER ASSEMBLY



Sr. No.	Part No.	Description	Qty.	Remark
1	P05.1201.001.0.PR	FRAME ASSEMBLY	1	
2	P05.1201.002.0.PR	STAND ASSEMBLY	1	
3	P05.1201.021.0.PR	SPRING FRONT STAND	2	
4	P05.1201.103.0.PR	MOUNTING PLATE FOR 5 HP	1	
5	57.003.10.050	SET SCREW - M10 x 1.5 x 50	1	
6	57.507.10.000	PLAIN PUNCHED WASHER - M10	16	
7	57.505.10.000	SPRING WASHER - M10	8	
8	57.006.10.000	NUT - M10 x1.5	8	
9	57.003.10.050	SET SCREW - M10 x1.5 x 45	7	



1st Free Service (20 hrs. or 30 days)	1st FREE SERVICE COUPON (20 hrs. or 30 Days from Date of Sale whichever is earlier)		Coupon No. :
Date of Service :	Model :	Date of Sale :	
Chassis No. :	Engine No. :	Date of Service :	
No. of working hours :	Chassis No. :	Next Service Due Date :	
Dealer's Stamp & Sign. :	Owner's Name :	Signature	Dealer's Seal & Signature
	Technician's Name :	Signature	

KIRLOSKAR OIL ENGINES LIMITED



2nd Free Service (100 hrs. or 75 days)	2nd FREE SERVICE COUPON (100 hrs. or 75 Days from Date of Sale whichever is earlier)		Coupon No. :
Date of Service :	Model :	Date of Sale :	
Chassis No. :	Engine No. :	Date of Service :	
No. of working hours :	Chassis No. :	Next Service Due Date :	
Dealer's Stamp & Sign. :	Owner's Name :	Signature	Dealer's Seal & Signature
	Technician's Name :	Signature	

KIRLOSKAR OIL ENGINES LIMITED



3rd Free Service (200 hrs. or 150 days)	3rd FREE SERVICE COUPON (200 hrs. or 150 Days from Date of Sale whichever is earlier)		Coupon No. :
Date of Service :	Model :	Date of Sale :	
Chassis No. :	Engine No. :	Date of Service :	
No. of working hours :	Chassis No. :	Next Service Due Date :	
Dealer's Stamp & Sign. :	Owner's Name :	Signature	Dealer's Seal & Signature
	Technician's Name :	Signature	

KIRLOSKAR OIL ENGINES LIMITED

Check List For 1 st Free Service				
Sr. No.	Mark ✓ after each operation is completed	Mark	Mark ✓ after each operation is completed	Mark
1	Clean Weeder thoroughly		Check for abnormal noise and vibration	
2	Clean crank case after running the engine for 5-10 minutes, clean oil screen assembly.		Check all control lever function	
3	Change engine oil and refill with recommended grade & quantity of engine oil		Clean dirt, dust & grass from the blades properly	
4	Clean air cleaner and filtering element. Change oil.			
5	Lubricate all moving parts.			
6	Check cylinder head nuts. Tighten the nut to the recommended torque.			
7	Check and tighten all nuts and bolts to the recommended torque.			
8	Adjust valve clearance as recommended.			
9	Clean fuel filter element, change it if necessary.			
10	Tighten the rotary blades Nuts and Bolts			
11	Tighten the Chassis stud and bolts			
12	Tighten the Wheel Nuts			
13	Start engine and follow.			

Check List For 2 nd Free Service				
Sr. No.	Mark ✓ after each operation is completed	Mark	Mark ✓ after each operation is completed	Mark
1	Clean Weeder thoroughly		Check for abnormal noise and vibration	
2	Clean crank case after running the engine for 5-10 minutes, clean oil screen assembly.		Check all control lever function	
3	Change engine oil and refill with recommended grade & quantity of engine oil		Clean dirt, dust & grass from the blades properly	
4	Clean air cleaner and filtering element. Change oil.			
5	Lubricate all moving parts.			
6	Check cylinder head nuts. Tighten the nut to the recommended torque.			
7	Check and tighten all nuts and bolts to the recommended torque.			
8	Adjust valve clearance as recommended.			
9	Clean fuel filter element, change it if necessary.			
10	Tighten the rotary blades Nuts and Bolts			
11	Tighten the Chassis stud and bolts			
12	Tighten the Wheel Nuts			
13	Drain, flush and fill Transmission case oil with recommended grade			
14	Start engine and follow.			

Check List For 3 rd Free Service				
Sr. No.	Mark ✓ after each operation is completed	Mark	Mark ✓ after each operation is completed	Mark
1	Clean Weeder thoroughly		Check for abnormal noise and vibration	
2	Clean crank case after running the engine for 5-10 minutes, clean oil screen assembly.		Check all control lever function	
3	Change engine oil and refill with recommended grade & quantity of engine oil		Clean dirt, dust & grass from the blades properly	
4	Clean air cleaner and filtering element. Change oil.			
5	Lubricate all moving parts.			
6	Check cylinder head nuts. Tighten the nut to the recommended torque.			
7	Check and tighten all nuts and bolts to the recommended torque.			
8	Adjust valve clearance as recommended.			
9	Clean fuel filter element, change it if necessary.			
10	Tighten the rotary blades Nuts and Bolts			
11	Tighten the Chassis stud and bolts			
12	Tighten the Wheel Nuts			
13	Drain, flush and fill Transmission case oil with recommended grade			
14	Start engine and follow.			

11. PDI Check List

PDI CHECK LIST		
Sr. No.	Engine	Mark
1	Check Engine Oil and Top up to Recommended Level	
2	Check Fuel Tank And fuel lines for leakage & tighten if required	
3	Check air cleaner oil and Top up to the mark	
4	Check Engine foundation bolts and tighten, if necessary	
5	Crank the engine 3 - 4 times	
6	Check exhaust condition	
7	Check abnormal sound	
8	Check vibration	
9	Check engine speed and hunting	
10	Check for oil leakage	

Sr. No.	Supportive Aggregates	Mark
1	Check gear box oil and Top-up the level	
2	Lubricate all moving parts of joints and lever	
3	Check tyre pressure	
4	Check all bolts and nuts and tighten, if necessary	
5	Tighten the wheel nuts and all blades nut & bolts	
6	Check all control lever function	

PDI Coupon No. :			
Model :	Engine No. :	Chassis No. :	Invoice No. :
Dealer's Name : _____ _____ _____		Dealer Code :	Signature
Technician's Name : _____ _____			Signature
Remarks if any : _____ _____ _____			Customer's Signature



Kirloskar Oil Engines Limited
A Kirloskar Group Company
13,Laxmanrao Kirloskar Road,
Khadki,Pune, Maharashtra 411003

P08.2501.015.0.PR